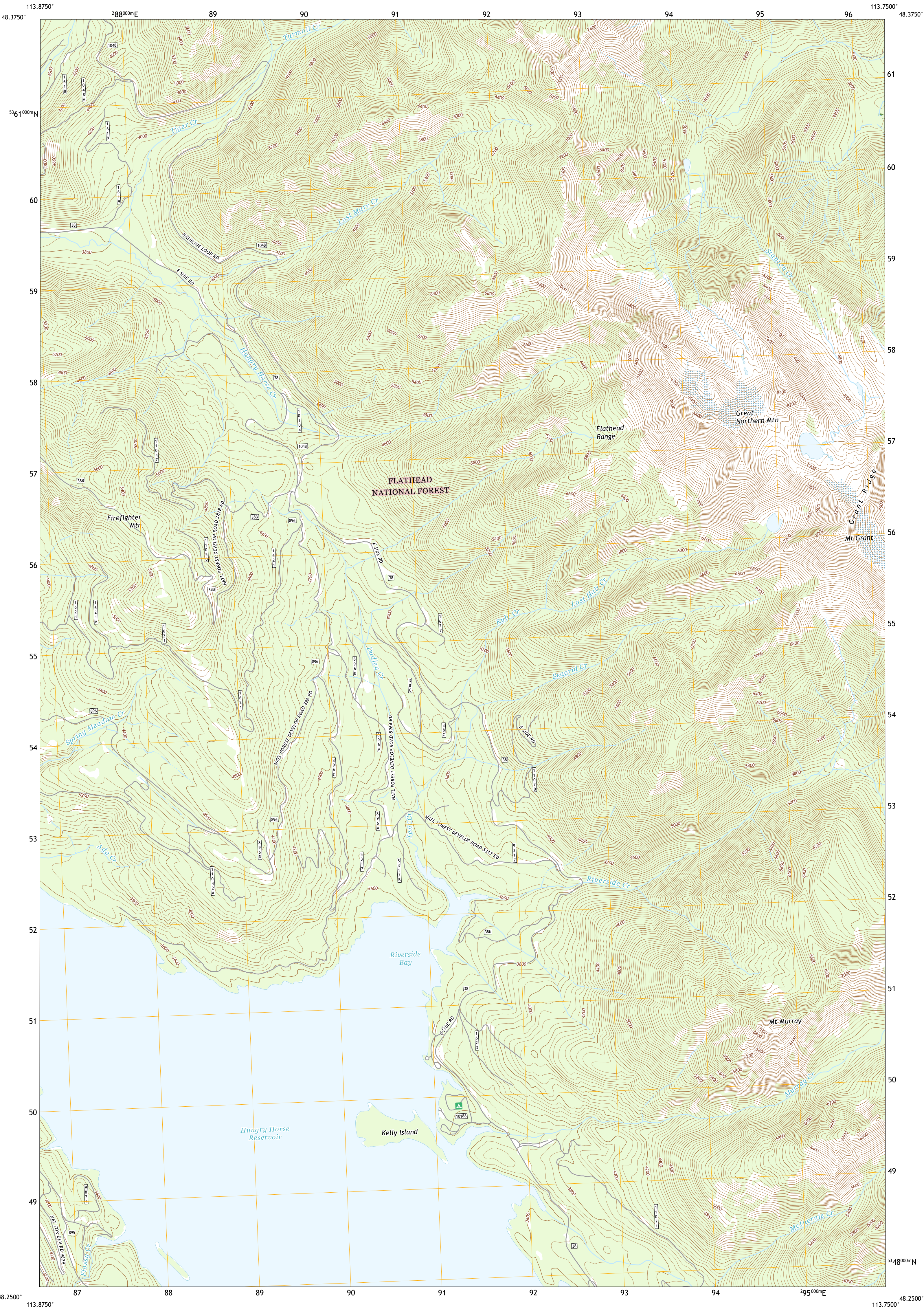




U.S. DEPARTMENT OF THE INTERIOR  
U.S. GEOLOGICAL SURVEY

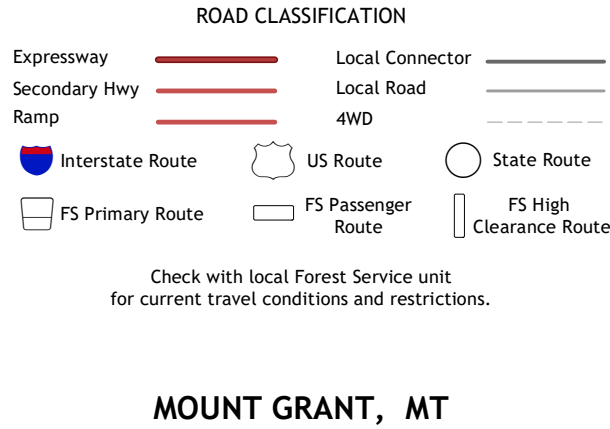
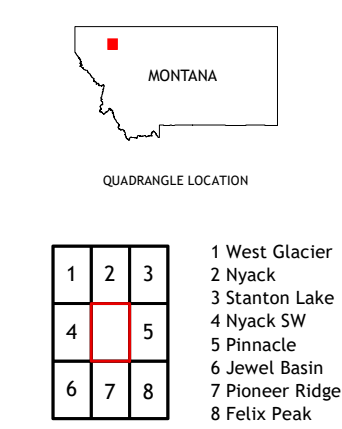
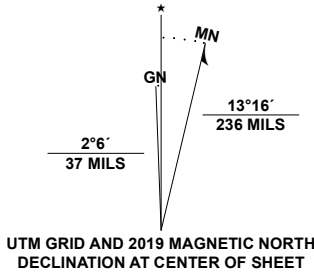


MOUNT GRANT QUADRANGLE  
MONTANA - FLATHEAD COUNTY  
7.5-MINUTE SERIES



**Produced by the United States Geological Survey**  
North American Datum of 1983 (NAD83)  
World Geodetic System of 1984 (WGS84). Projection and  
1 000-meter grid: Universal Transverse Mercator, Zone 12U  
This map is not a legal document. Boundaries may be  
generalized for this map scale. Private lands within government  
reservations may not be shown. Obtain permission before  
entering private lands.

Imagery.....NAIP, Not Available  
Roads.....U.S. Census Bureau, Not Available  
Roads within US Forest Service Lands.....FS Topo Data  
Names.....with limited Forest Service updates, 2013  
Contours.....National Hydrography Dataset, 2002 - 2019  
Boundaries.....National Elevation Dataset, 2001  
Public Land Survey System.....Multiple sources; see metadata file  
Wetlands.....BLM, 2018  
Wetlands.....FWS National Wetlands Inventory 1984 - 2009



**MOUNT GRANT, MT**  
**2020**



NSN 7164-301-6377-401  
NSA REF NO. USGSX24K0602