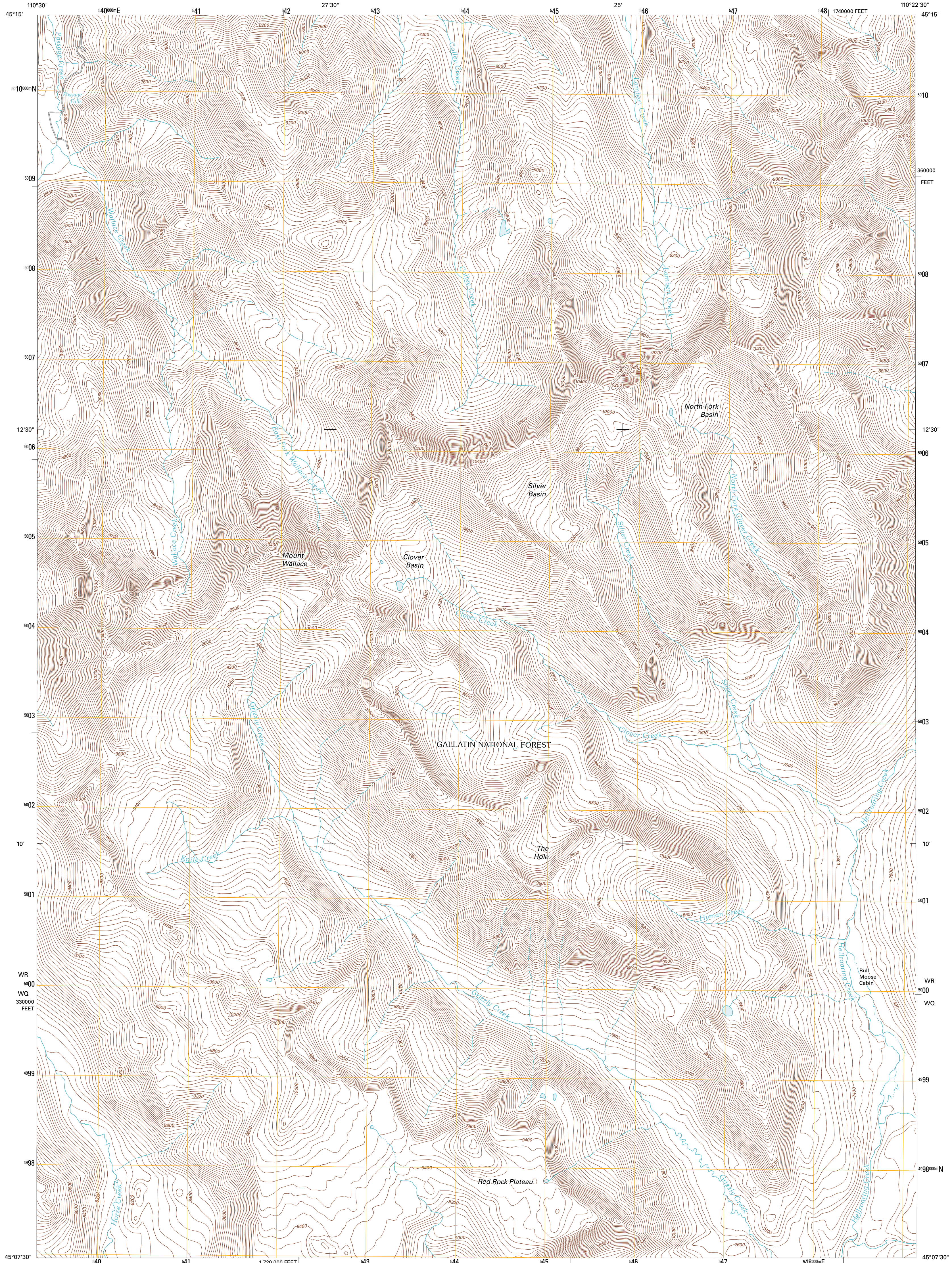




U.S. DEPARTMENT OF THE INTERIOR  
U. S. GEOLOGICAL SURVEY

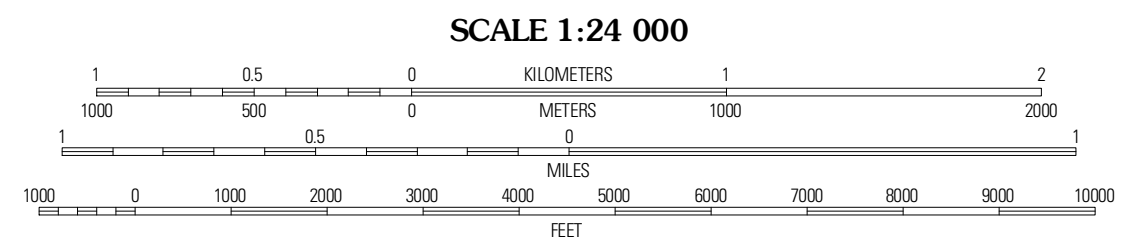
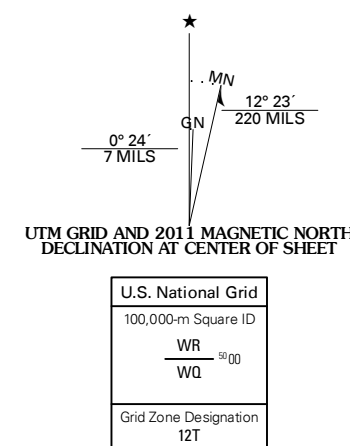


MOUNT WALLACE QUADRANGLE  
MONTANA-PARK CO.  
7.5-MINUTE SERIES



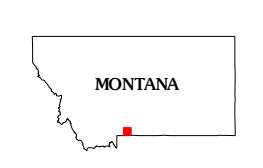
Produced by the United States Geological Survey  
North American Datum of 1983 (NAD83)  
World Geodetic System of 1984 (WGS84). Projection and  
1 000-meter grid: Universal Transverse Mercator, Zone 12T  
10 000-foot ticks: Montana Coordinate System of 1983

Imagery.....NIP, July 2009  
Roads.....©2006-2010 Tele Atlas  
Roads within US Forest Service Lands.....FSTopo Data  
with limited Forest Service updates, 2009  
Names.....GNIS, 2010  
Hydrography.....National Hydrography Dataset, 2009  
Contours.....National Elevation Dataset, 1999  
Boundaries.....Census, IBWC, IBC, USGS, 1972 - 2010



CONTOUR INTERVAL 40 FEET  
NORTH AMERICAN VERTICAL DATUM OF 1988

This map was produced to conform with version 0.5.10  
of the USGS US Topo Product Standard.  
A metadata file associated with this product is draft version 0.5.16



Koehler Peak	The Pyramid	The Needles
Mineral Mountain	Mount Wallace	Iron Mountain
Ash Mountain	Specimen Creek	Hummingbird Peak

**ROAD CLASSIFICATION**

Interstate Route

US Route

Ramp

State Route

Local Road

4WD

US Route

FS Primary Route

FS Passenger Route

State Route

FS High Clearance Route

Check with local Forest Service unit  
for current travel conditions and restrictions.

MOUNT WALLACE, MT  
2011

ADJOINING 7.5' QUADRANGLES