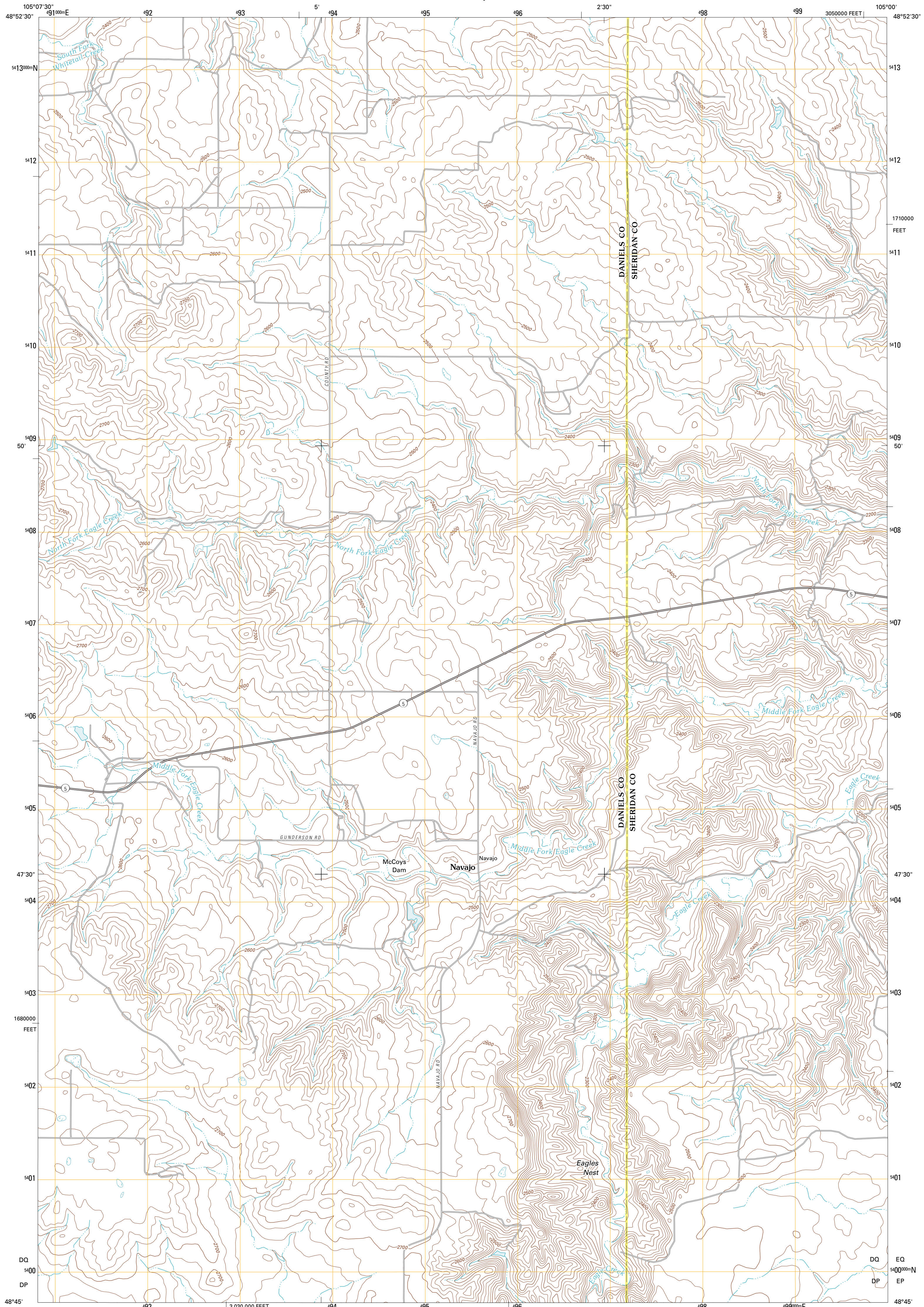




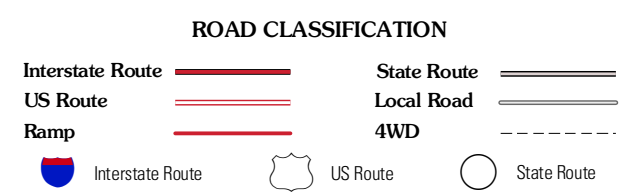
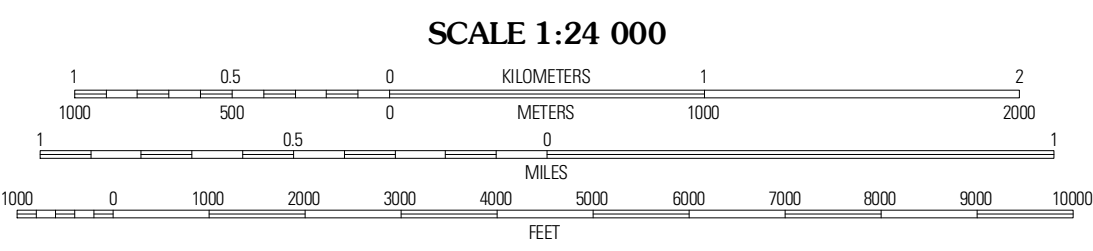
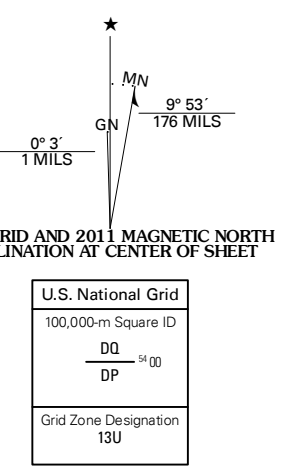
U.S. DEPARTMENT OF THE INTERIOR
U. S. GEOLOGICAL SURVEY



NAVAJO QUADRANGLE
MONTANA
7.5-MINUTE SERIES



Produced by the United States Geological Survey
North American Datum of 1983 (NAD83)
World Geodetic System of 1984 (WGS84). Projection and
1 000-meter grid: Universal Transverse Mercator, Zone 13U
10 000-foot ticks: Montana Coordinate System of 1983



Imagery.....NAP, August 2009
Roads.....©2006-2010 Tele Atlas
Names.....National Geographic, GNS, 2010
Hydrography.....National Hydrography Dataset, 2009
Contours.....National Elevation Dataset, 2008
Boundaries.....Census, IBWC, IBC, USGS, 1972 - 2010

U.S. National Grid
100,000=Square ID
DP = 10'
Grid Zone Designation
13U

CONTOUR INTERVAL 20 FEET
NORTH AMERICAN VERTICAL DATUM OF 1988
This map was produced to conform with version 0.5.10
of the USGS US Topo Product Standard.
A metadata file associated with this product is draft version 0.5.16

QUADRANGLE LOCATION

Whitetail	Goodale	Daleview
Flaxville	Navajo	Redstone
Pleasant Prairie NW	Pleasant Prairie NE	Soo NW

ADJOINING 7.5 QUADRANGLES

NAVAJO, MT
2011