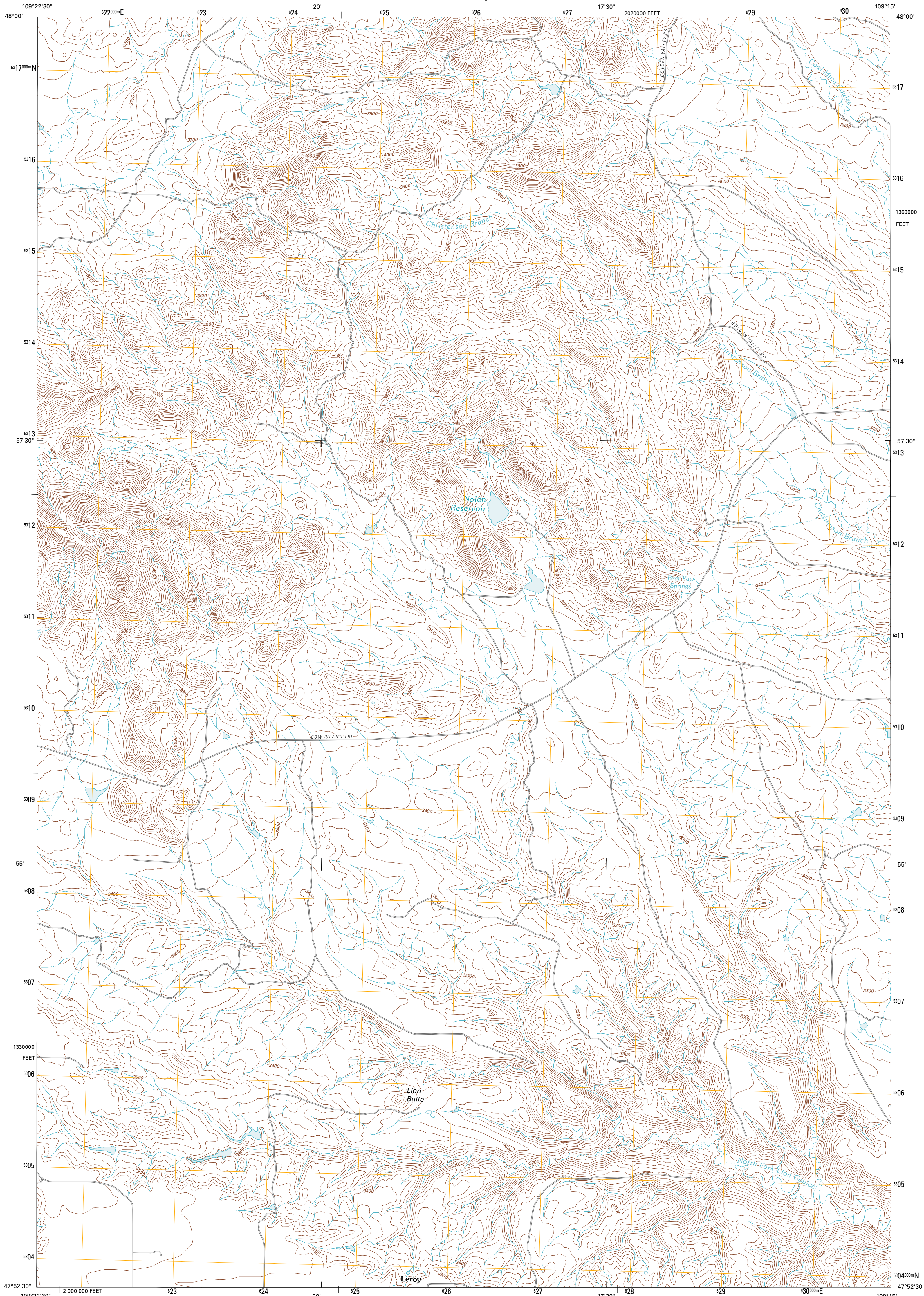




U.S. DEPARTMENT OF THE INTERIOR
U. S. GEOLOGICAL SURVEY



NOLAN RESERVOIR QUADRANGLE
MONTANA-BLAINE CO.
7.5-MINUTE SERIES

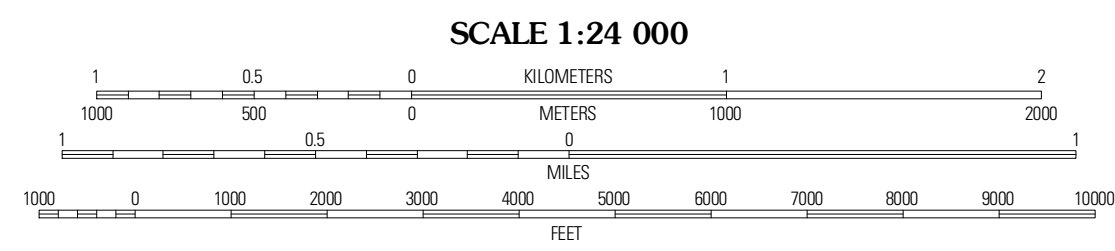


Produced by the United States Geological Survey
North American Datum of 1983 (NAD83)
World Geodetic System of 1984 (WGS84). Projection and
1 000-meter grid: Universal Transverse Mercator, Zone 12T
10 000-foot ticks: Montana Coordinate System of 1983

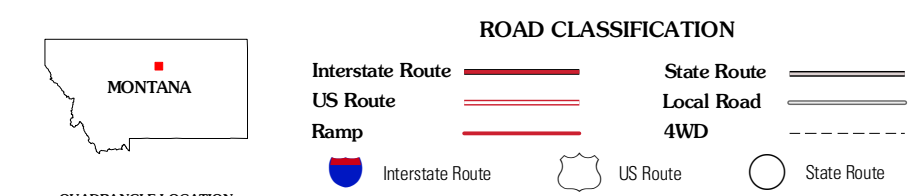
Imagery.....NAP, July 2009
Roads.....©2006-2010 Tele Atlas
Names.....GNIS, 2010
Hydrography.....National Hydrography Dataset, 2009
Contours.....National Elevation Dataset, 2008
Boundaries.....Census, IBWC, IBC, USGS, 1972 - 2010

UTM GRID AND 2011 MAGNETIC NORTH
DECLINATION AT CENTER OF SHEET

| | |
|-----------------------|-----------|
| U.S. National Grid | 18° 18' |
| XU | 219 MILES |
| Grid Zone Designation | 12T |

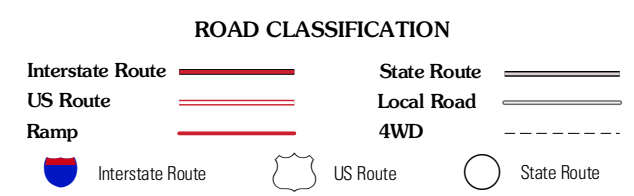


SCALE 1:24 000
CONTOUR INTERVAL 20 FEET
NORTH AMERICAN VERTICAL DATUM OF 1988
This map was produced to conform with version 0.5.10
of the USGS US Topo Product Standard.
A metadata file associated with this product is draft version 0.5.16



QUADRANGLE LOCATION

| | | |
|-----------------|------------------|---------------------|
| Blue Stone Peak | Williamson Butte | Ransom Bench |
| Saddle Rock | Nolan Reservoir | Sandpiper Reservoir |
| Ragland Bench | Leroy | Bird Rapids |



NOLAN RESERVOIR, MT
2011