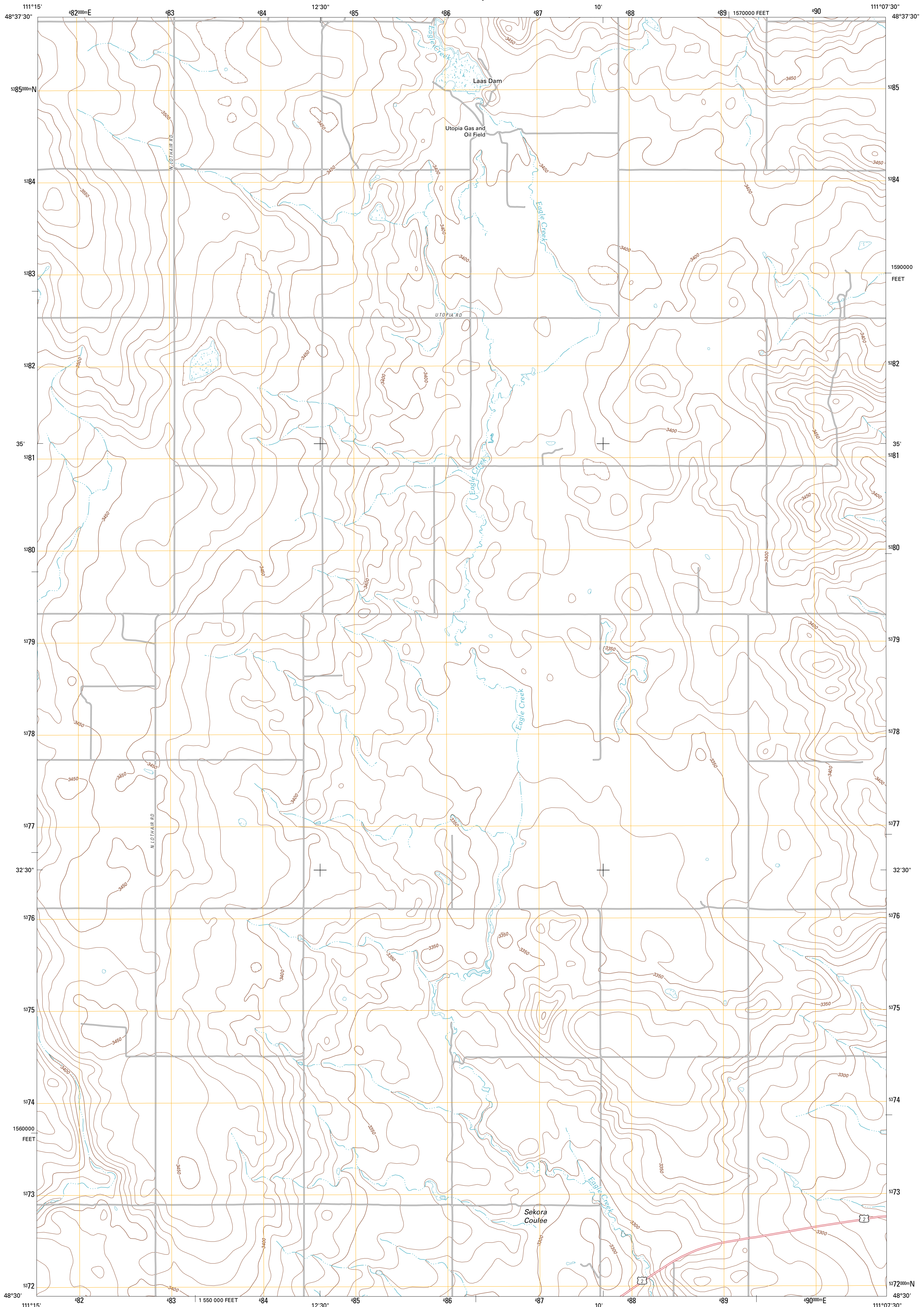




U.S. DEPARTMENT OF THE INTERIOR  
U. S. GEOLOGICAL SURVEY



NORTH LOTHAIR SCHOOL QUADRANGLE  
MONTANA-LIBERTY CO.  
7.5-MINUTE SERIES

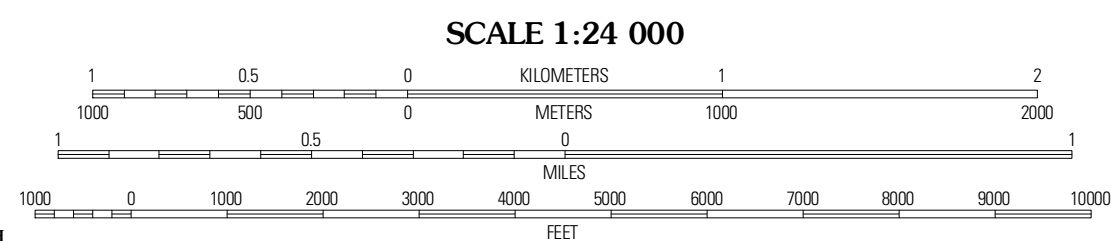


Produced by the United States Geological Survey  
North American Datum of 1983 (NAD83)  
World Geodetic System of 1984 (WGS84). Projection and  
1 000-meter grid: Universal Transverse Mercator, Zone 122U  
10 000-foot ticks: Montana Coordinate System of 1983

Imagery.....NAIP, August 2009 - September 2009  
Roads.....©2006-2010 Tele Atlas  
Names.....©2006-2010 Tele Atlas  
Hydrography.....National Hydrography Dataset, 2009  
Contours.....National Elevation Dataset, 2008  
Boundaries.....Census, IBWC, IBC, USGS, 1972 - 2010

UTM GRID AND 2011 MAGNETIC NORTH  
DECLINATION AT CENTER OF SHEET

U.S. National Grid	122U
100,000-m Square ID	WU
Grid Zone Designation	122U



ROAD CLASSIFICATION

Interstate Route	State Route
US Route	Local Road
Ramp	4WD
Interstate Route	US Route
	State Route

ADJOINING 7.5' QUADRANGLES

Berkholder Reservoir	Blair Ranch	Lakey Ranch
McCarters Lake SE	North Lothair School	Tiber
Gabata	Lothair	Sagebrush Coulee

NORTH LOTHAIR SCHOOL, MT  
2011