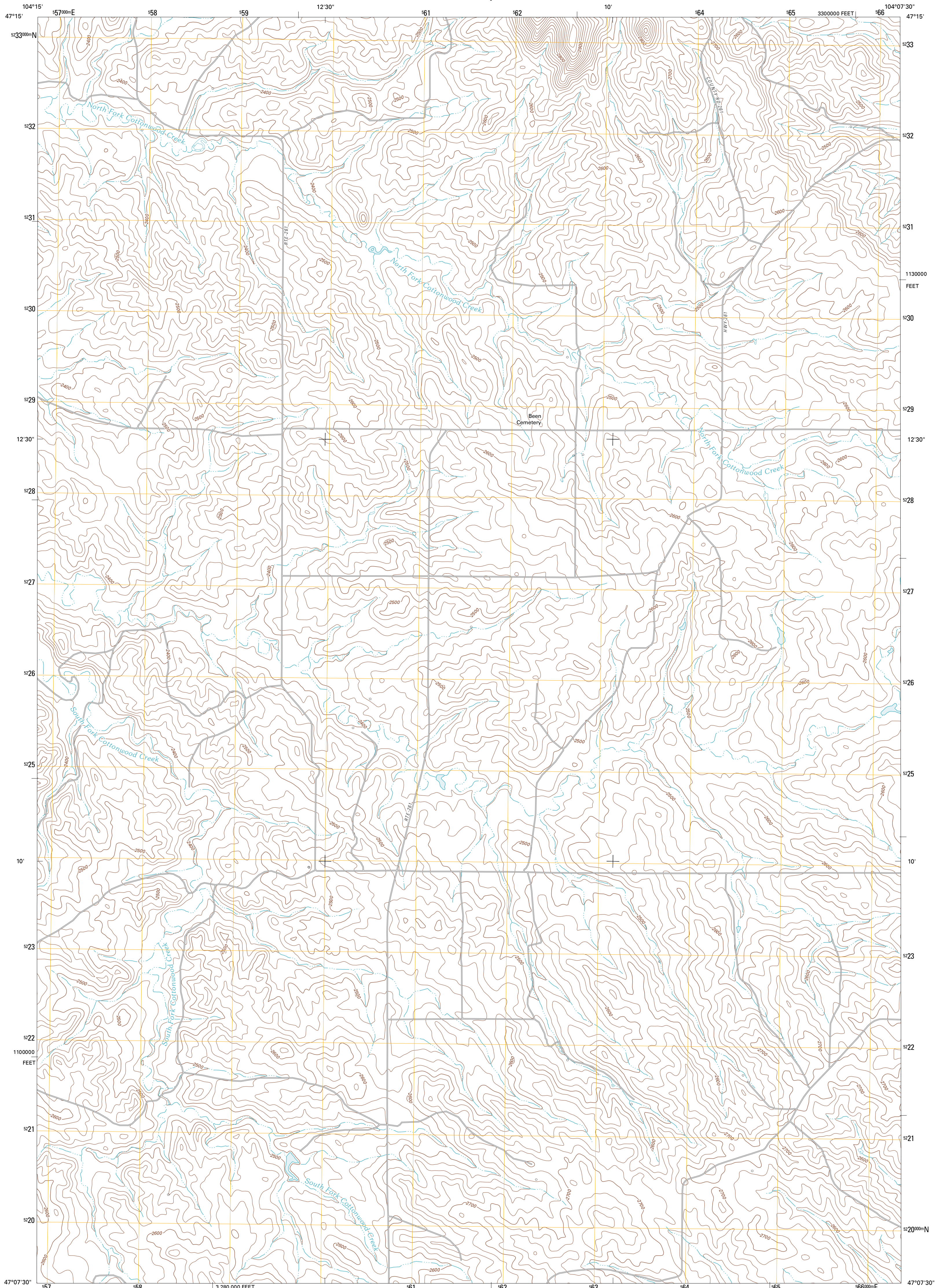




U.S. DEPARTMENT OF THE INTERIOR  
U. S. GEOLOGICAL SURVEY



ODLAND DAM NW QUADRANGLE  
MONTANA-WIBAUX CO.  
7.5-MINUTE SERIES

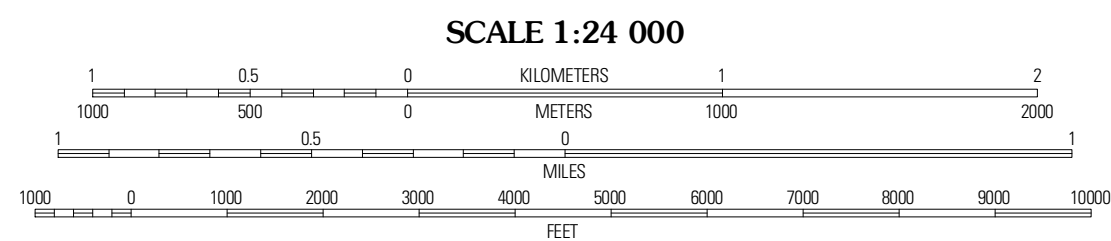


Produced by the United States Geological Survey  
North American Datum of 1983 (NAD83)  
World Geodetic System of 1984 (WGS84). Projection and  
1 000-meter grid: Universal Transverse Mercator, Zone 13T  
10 000-foot ticks: Montana Coordinate System of 1983

Imagery.....NAP, August 2009  
Roads.....©2006-2010 Tele Atlas  
Names.....GNIS, 2010  
Hydrography.....National Hydrography Dataset, 2009  
Contours.....National Elevation Dataset, 2009  
Boundaries.....Census, BWC, IBC, USGS, 1972 - 2010

UTM GRID AND 2011 MAGNETIC NORTH  
DECLINATION AT CENTER OF SHEET

|  |     |
|--|-----|
| U.S. National Grid<br>100,000m Square ID | EN  |
| Grid Zone Designation                    | 13T |



CONTOUR INTERVAL 20 FEET  
NORTH AMERICAN VERTICAL DATUM OF 1988

This map was produced to conform with version 0.5.10  
of the USGS US Topo Product Standard.  
A metadata file associated with this product is draft version 0.5.16



QUADRANGLE LOCATION

|                   |               |               |
|-------------------|---------------|---------------|
| Savage SE         | Parson Creek  | Skarr         |
| Cluster Buttes    | Olland Dam NW | Olland Dam NE |
| Cluster Buttes SE | Olland Dam SW | Olland Dam    |

ROAD CLASSIFICATION

Interstate Route State Route   
US Route Local Road   
Ramp 4WD   
Interstate Route US Route State Route

ODLAND DAM NW, MT  
2011

ADJOINING 7.5 QUADRANGLES