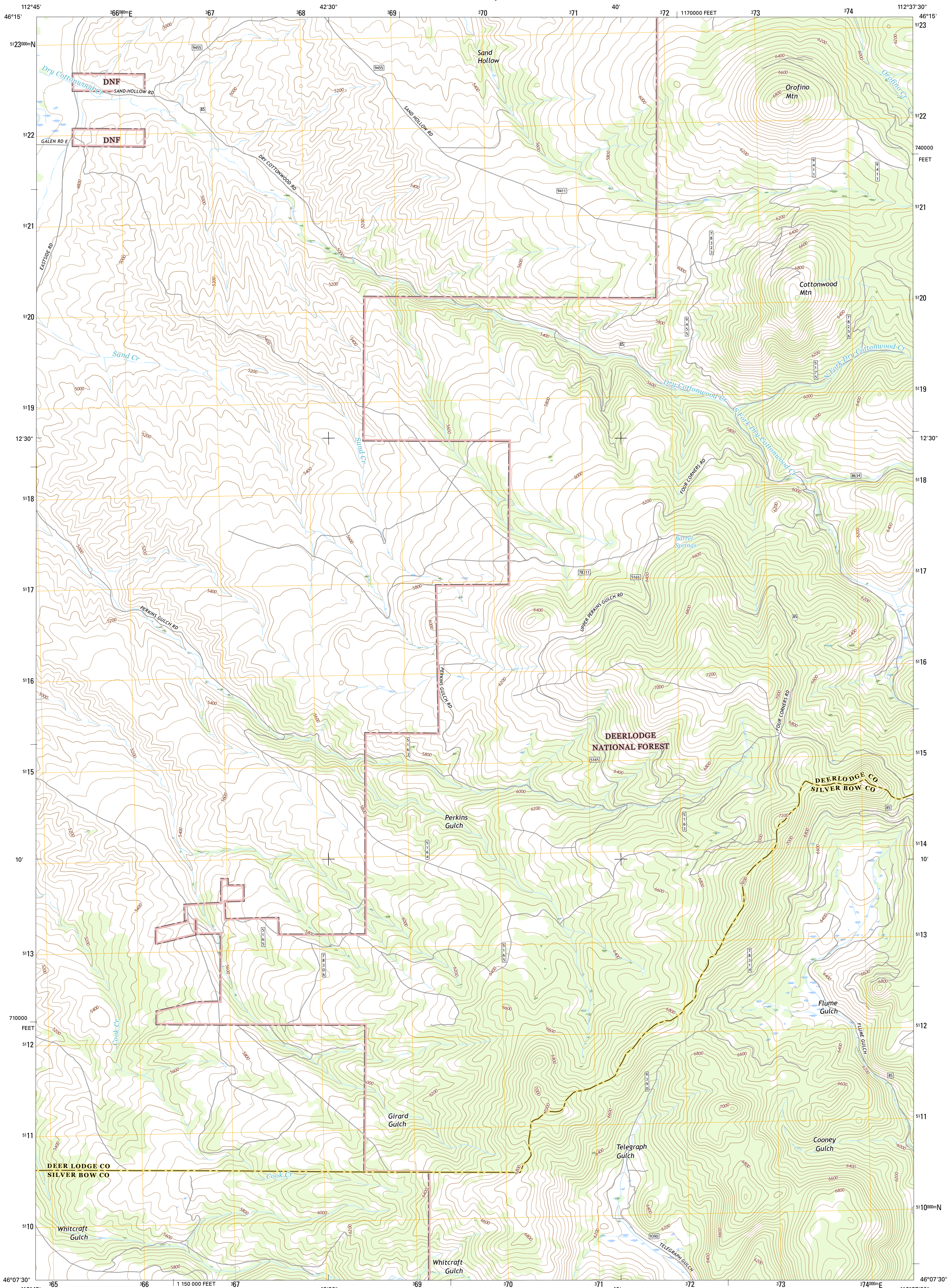




U.S. DEPARTMENT OF THE INTERIOR
U.S. GEOLOGICAL SURVEY



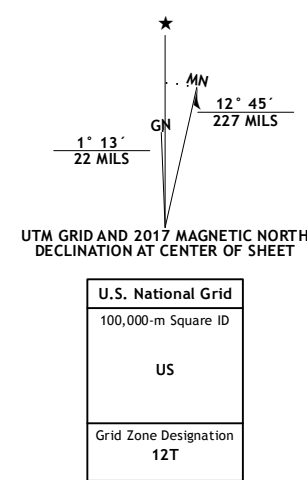
OROFINO MOUNTAIN QUADRANGLE
MONTANA
7.5-MINUTE SERIES



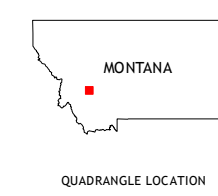
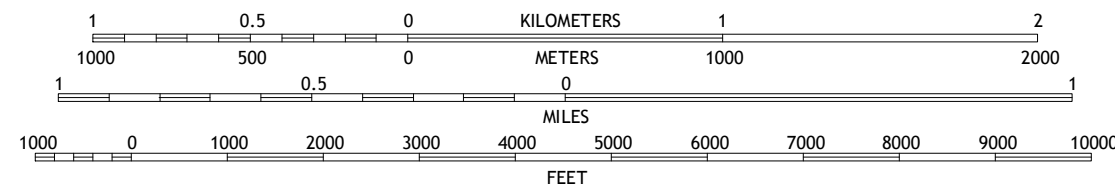
Produced by the United States Geological Survey
North American Datum of 1983 (NAD83)
World Geodetic System of 1984 (WGS84). Projection and
1 000-meter grid: Universal Transverse Mercator, Zone 12T
10 000-foot ticks: Montana Coordinate System of 1983

This map is not a legal document. Boundaries may be
generalized for this map scale. Private lands within government
reservations may not be shown. Obtain permission before
entering private lands.

Imagery.....NAIP, January 2016
Roads.....U.S. Census Bureau, 2015 - 2016
Roads within US Forest Service Lands.....FS Topo Data
with limited Forest Service updates, 2012 - 2016
Names.....GNIS, 2016
Hydrography.....National Hydrography Dataset, 2016
Contours.....National Elevation Dataset, 2005
Boundaries.....Multiple sources; see metadata file 1972 - 2016
Public Land Survey System.....BLM, 2016
Wetlands.....FWS National Wetlands Inventory 1977 - 2014



SCALE 1:24 000



QUADRANGLE LOCATION

CONTOUR INTERVAL 40 FEET
NORTH AMERICAN VERTICAL DATUM OF 1988
This map was produced to conform with the
National Geospatial Program US Topo Product Standard, 2011.
A metadata file associated with this product is draft version 0.6.19

| | | |
|---|---|---|
| 1 | 2 | 3 |
| 4 | 5 | 6 |
| 7 | 8 | 8 |

1 Racetrack
2 Orofino Creek
3 Sugarloaf Mountain
4 Warm Springs
5 Lockhart Meadows
6 Opportunity
7 Ramsey
8 Butte North

ROAD CLASSIFICATION

| | | |
|------------------|--------------------|--------------------|
| Expressway | Local Connector | State Route |
| Secondary Hwy | Local Road | FS High |
| Ramp | 4WD | Clearance Route |
| Interstate Route | US Route | FS Passenger Route |
| FS Primary Route | FS Passenger Route | |

Check with local Forest Service unit
for current travel conditions and restrictions.

OROFINO MOUNTAIN, MT
2017

