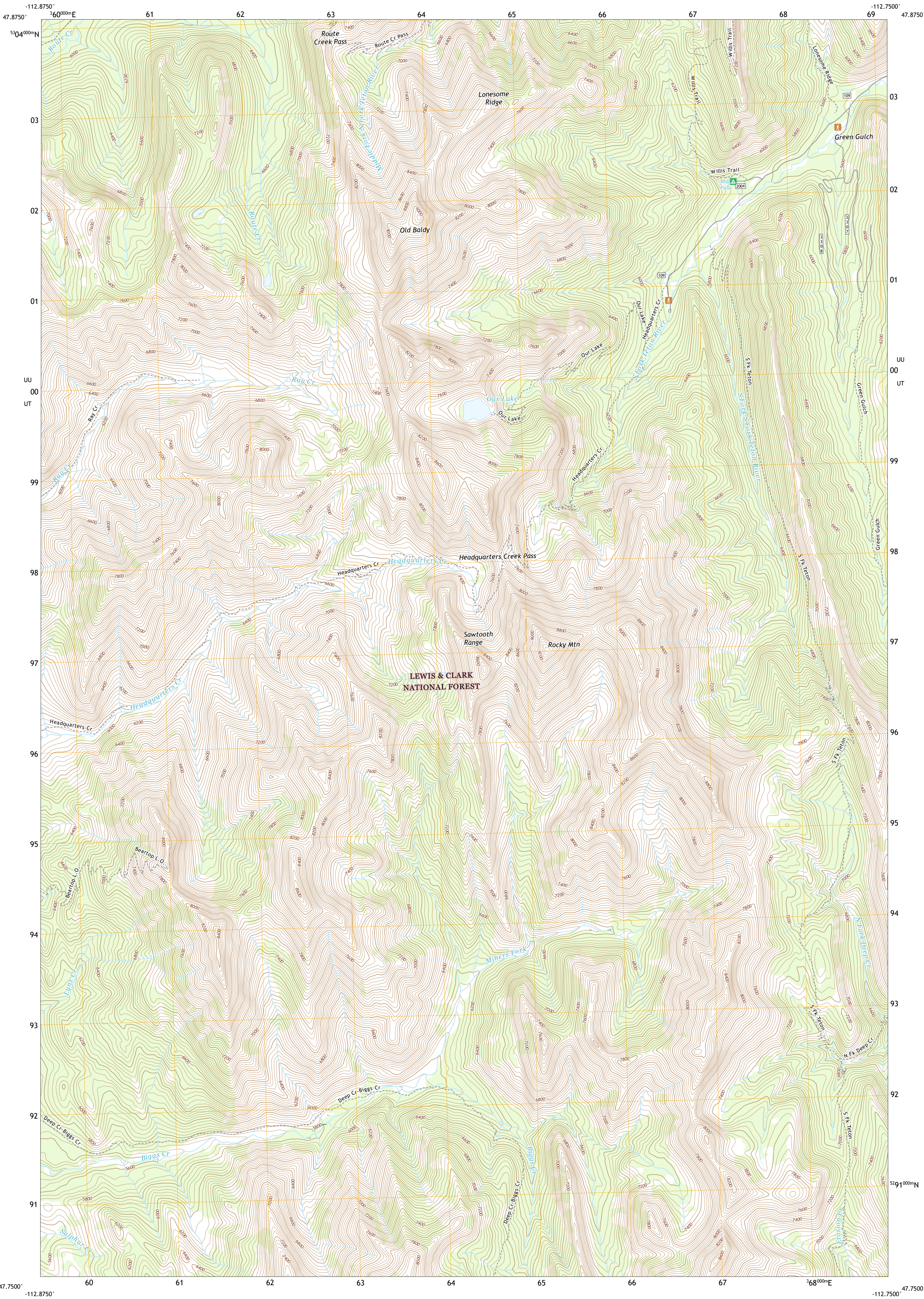




U.S. DEPARTMENT OF THE INTERIOR
U.S. GEOLOGICAL SURVEY



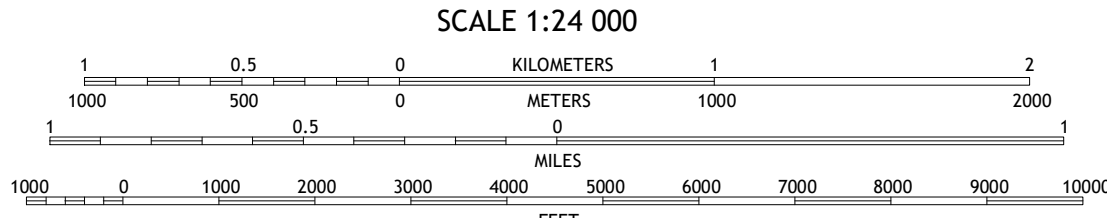
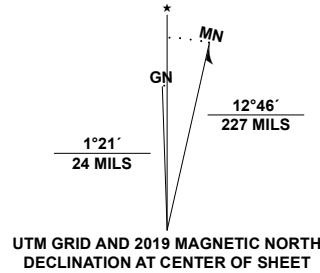
OUR LAKE QUADRANGLE
MONTANA - TETON COUNTY
7.5-MINUTE SERIES



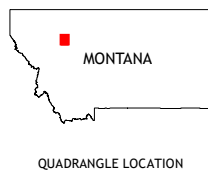
Produced by the United States Geological Survey

North American Datum of 1983 (NAD83)
World Geodetic System of 1984 (WGS84). Projection and
1 000-meter grid-Universal Transverse Mercator, Zone 12T
This map is not a legal document. Boundaries may be
generalized for this map scale. Private lands within government
reservations may not be shown. Obtain permission before
entering private lands.

Imagery.....NAIP, Not Available
Roads.....U.S. Census Bureau, Not Available
Roads within US Forest Service Lands.....FS Topo Data
Names.....with limited Forest Service updates, 2013
Hydrography.....National Hydrography Dataset, 2004 - 2019
Contours.....National Elevation Dataset, 1999 - 2006
Boundaries.....Multiple sources; see metadata file, 2019
Public Land Survey System.....BLM, 2018
Wetlands.....FWS National Wetlands Inventory, 1984



CONTOUR INTERVAL 40 FEET
NORTH AMERICAN VERTICAL DATUM OF 1988
This map was produced to conform with the
National Geospatial Program US Topo Product Standard, 2011.
A metadata file associated with this product is draft version 0.6.18



1	2	3
4	5	6
7	8	9

ADJOINING QUADRANGLES

1 Porphyry Reef
2 Mount Wright
3 Cave Mountain
4 Gates Park
5 Ear Mountain
6 Glenn Creek
7 Arsenic Mountain
8 Castle Reef

ROAD CLASSIFICATION	
Expressway	Local Connector
Secondary Hwy	Local Road
Ramp	4WD
Interstate Route	US Route
FS Primary Route	FS Passenger Route
	FS High Clearance Route
	State Route

Check with local Forest Service unit
for current travel conditions and restrictions.

OUR LAKE, MT
2020

