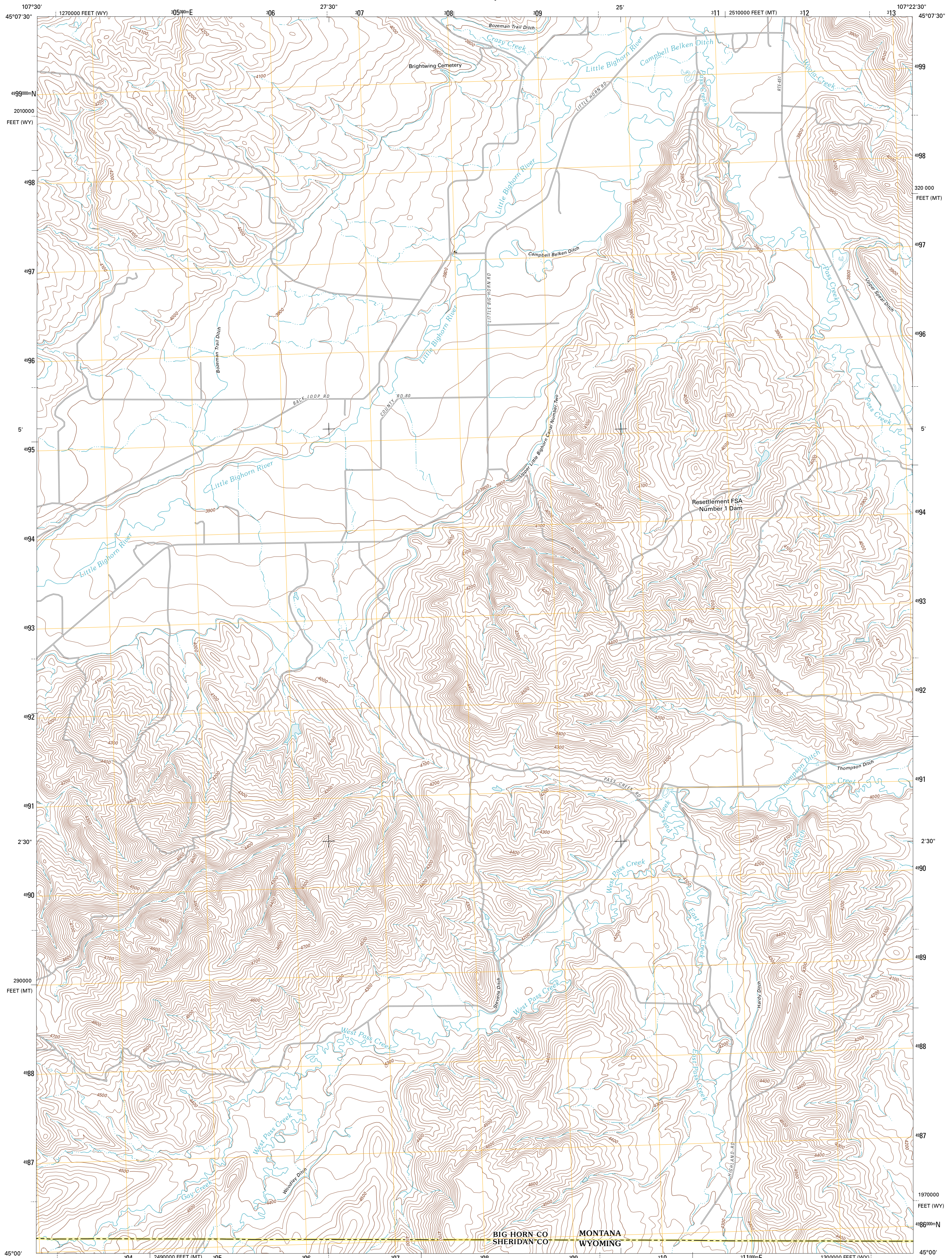




U.S. DEPARTMENT OF THE INTERIOR  
U. S. GEOLOGICAL SURVEY

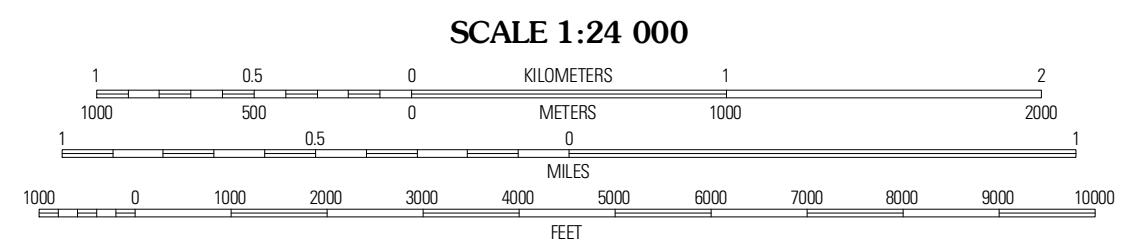
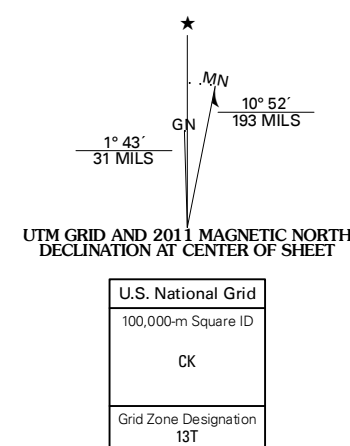


PASS CREEK WEST QUADRANGLE  
MONTANA-WYOMING  
7.5-MINUTE SERIES



Produced by the United States Geological Survey  
North American Datum of 1983 (NAD83)  
World Geodetic System of 1984 (WGS84). Projection and  
1 000-meter grid: Universal Transverse Mercator, Zone 13T  
10 000-foot ticks: Montana Coordinate System of 1983,  
Wyoming Coordinate System of 1983 (east central zone)

Imagery.....N.A.P., June 2009  
Roads.....©2006-2010 Tele Atlas  
Names.....GNIS, 2010  
Hydrography.....National Hydrography Dataset, 2009  
Contours.....National Elevation Dataset, 2009  
Boundaries.....Census, IBWC, IBC, USGS, 1972 - 2010

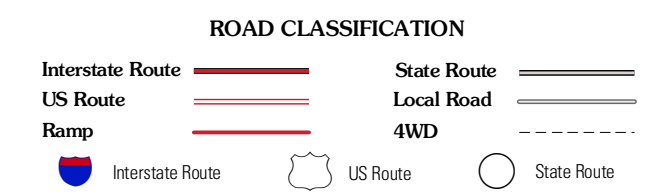


SCALE 1:24 000  
CONTOUR INTERVAL 20 FEET  
NORTH AMERICAN VERTICAL DATUM OF 1988  
This map was produced to conform with version 0.5.10  
of the USGS US Topo Product Standard.  
A metadata file associated with this product is draft version 0.5.16



QUADRANGLE LOCATION

|                  |                 |                 |
|------------------|-----------------|-----------------|
| Willow Creek Dam | Wyola           | Wyola NE        |
| Black Gulch      | Pass Creek West | Pass Creek East |
| West Pass        | Columbus Peak   | Dayton North    |



PASS CREEK WEST, MT-WY  
2011