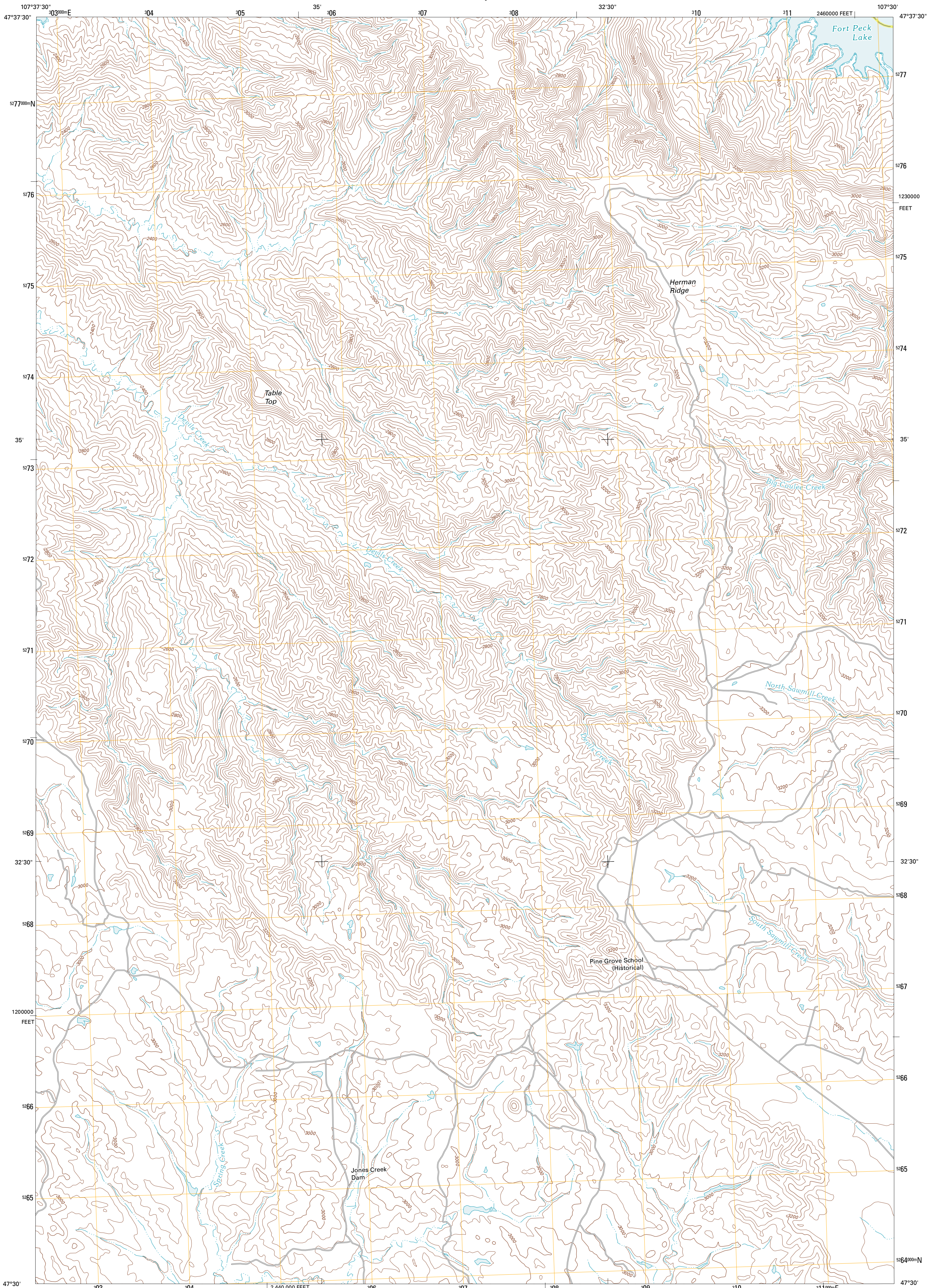




U.S. DEPARTMENT OF THE INTERIOR  
U. S. GEOLOGICAL SURVEY



PINE GROVE SCHOOL QUADRANGLE  
MONTANA  
7.5-MINUTE SERIES

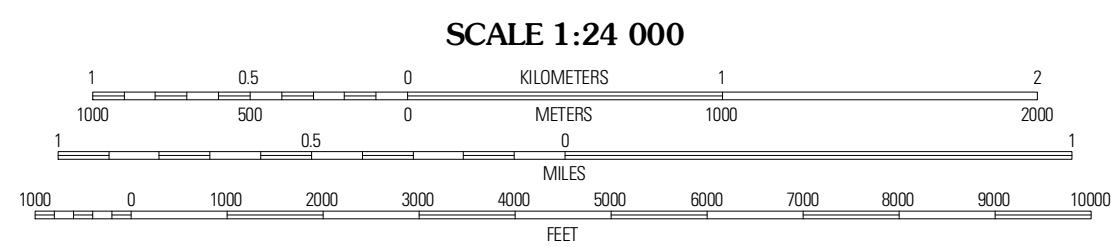


Produced by the United States Geological Survey  
North American Datum of 1983 (NAD83)  
World Geodetic System of 1984 (WGS84). Projection and  
1 000 meter grid: Universal Transverse Mercator, Zone 13T  
10 000-foot ticks: Montana Coordinate System of 1983

Imagery.....NAIP, July 2009  
Roads.....©2006-2010 Tele Atlas  
Names.....©2006-2010 Tele Atlas  
Hydrography.....National Hydrography Dataset, 2009  
Contours.....National Elevation Dataset, 1999  
Boundaries.....Census, IBWC, IBC, USGS, 1972 - 2010

UTM GRID AND 2011 MAGNETIC NORTH  
DECLINATION AT CENTER OF SHEET

|                       |         |
|-----------------------|---------|
| U.S. National Grid    | 11° 17' |
| DN                    |         |
| Grid Zone Designation | 13T     |



ROAD CLASSIFICATION

|                  |             |
|------------------|-------------|
| Interstate Route | State Route |
| US Route         | Local Road  |
| Ramp             | 4WD         |

Interstate Route   
 US Route   
 State Route

|                |                     |                  |
|----------------|---------------------|------------------|
| Herman Point   | Snyder Butte        | Saddle Ridge     |
| Lost Creek     | Pine Grove School   | Sawmill Creek    |
| Cap Rock Butte | Spring Creek School | Blackfoot School |

ADJOINING 7.5' QUADRANGLES

CONTOUR INTERVAL 40 FEET  
NORTH AMERICAN VERTICAL DATUM OF 1988

This map was produced to conform with version 0.5.10  
of the USGS US Topo Product Standard.  
A metadata file associated with this product is draft version 0.5.16

PINE GROVE SCHOOL, MT  
2011