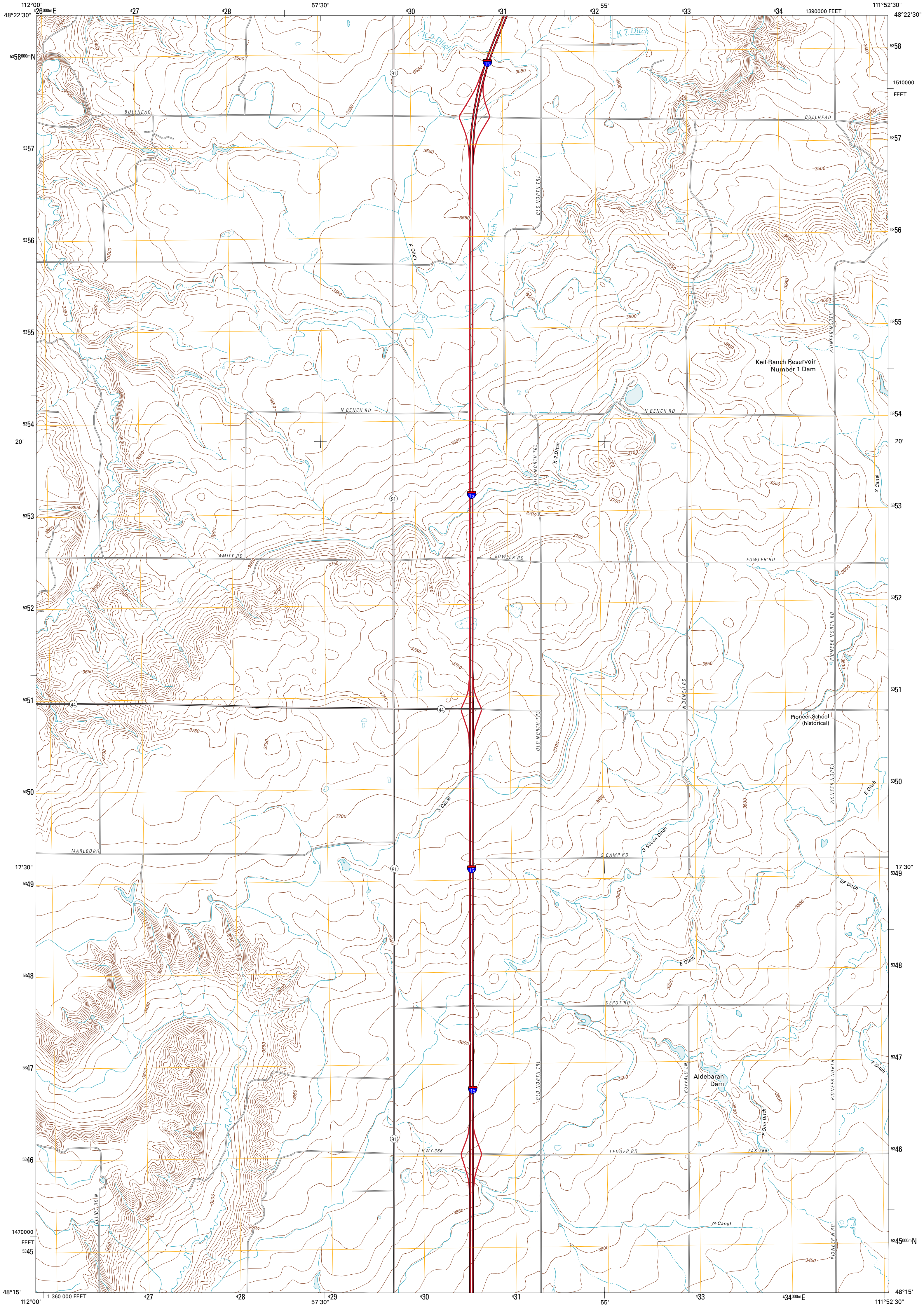




U.S. DEPARTMENT OF THE INTERIOR
U. S. GEOLOGICAL SURVEY



PIONEER SCHOOL QUADRANGLE
MONTANA-PONDERA CO.
7.5-MINUTE SERIES

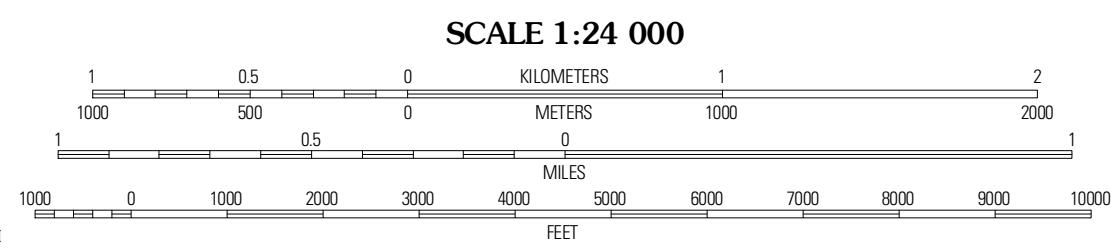


Produced by the United States Geological Survey
North American Datum of 1983 (NAD83)
World Geodetic System of 1984 (WGS84). Projection and
1 000-meter grid: Universal Transverse Mercator, Zone 12U
10 000-foot ticks: Montana Coordinate System of 1983

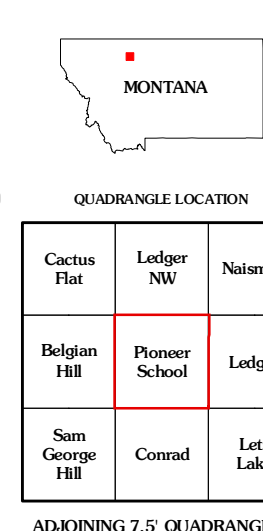
Imagery.....N.A.P., August 2009
Roads.....©2006-2010 Tele Atlas
Names.....GNIS, 2010
Hydrography.....National Hydrography Dataset, 2009
Contours.....National Elevation Dataset, 2008
Boundaries.....Census, IBWC, USGS, 1972 - 2010

UTM GRID AND 2011 MAGNETIC NORTH
DECLINATION AT CENTER OF SHEET

| | |
|---|-----|
| U.S. National Grid 100,000-m Square ID | WU |
| Grid Zone Designation | 12U |



CONTOUR INTERVAL 10 FEET
NORTH AMERICAN VERTICAL DATUM OF 1988
This map was produced to conform with version 0.5.10
of the USGS US Topo Product Standard.
A metadata file associated with this product is draft version 0.5.16



ROAD CLASSIFICATION

| | |
|------------------|-------------|
| Interstate Route | State Route |
| US Route | Local Road |
| Ramp | 4WD |

Legend for road types: Interstate Route (blue circle), US Route (red line), State Route (grey line), Local Road (black line), 4WD (dashed line).

ADJOINING 7.5' QUADRANGLES

| | | |
|-----------------|----------------|-----------|
| Cactus Flat | Ledger NW | Nutsmith |
| Belgian Hill | Pioneer School | Ledger |
| Sam George Hill | Conrad | Lake Lake |

PIONEER SCHOOL, MT
2011