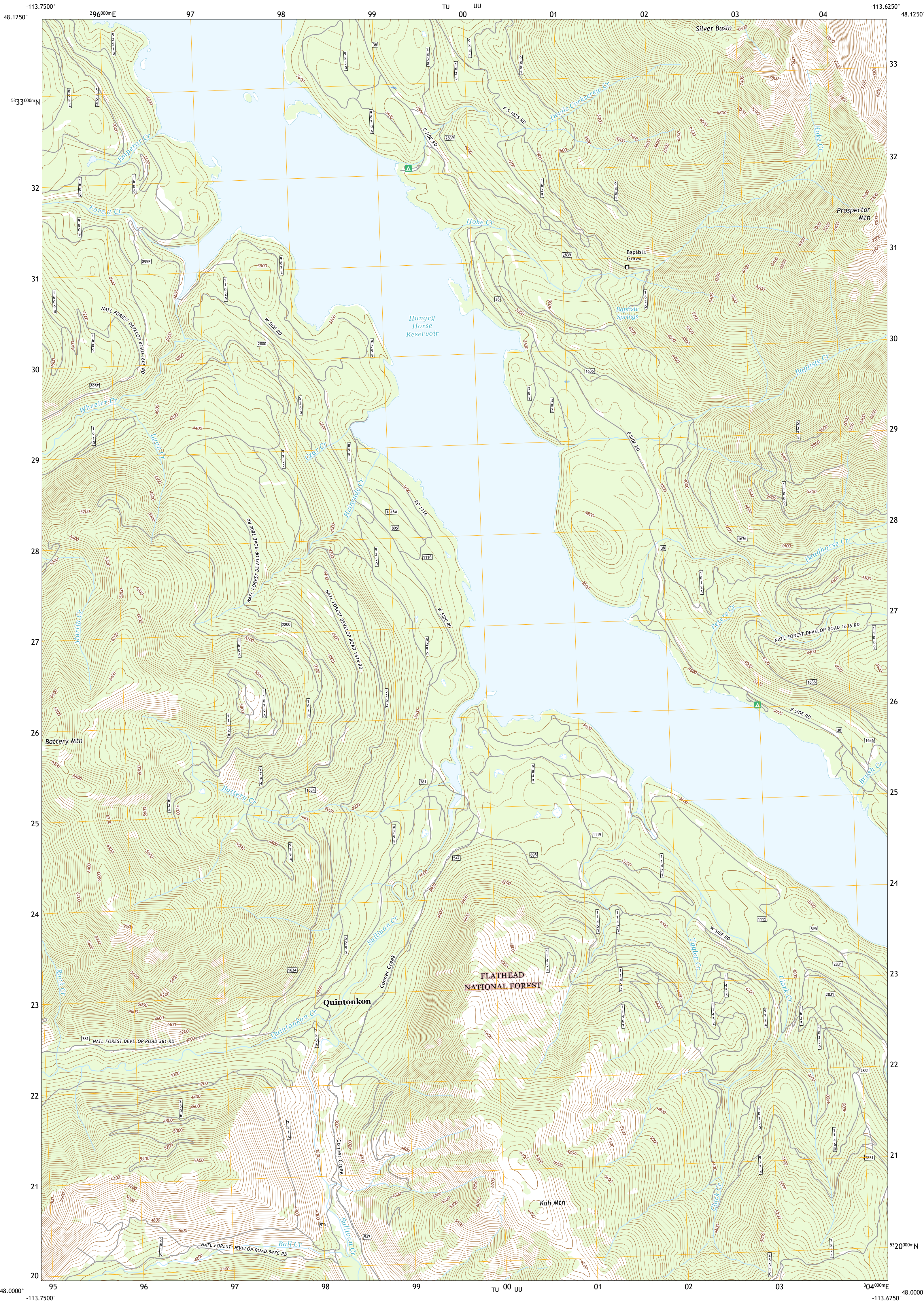




U.S. DEPARTMENT OF THE INTERIOR
U.S. GEOLOGICAL SURVEY

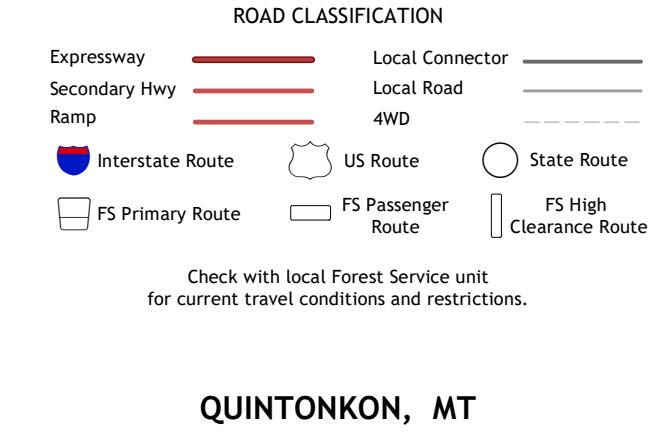
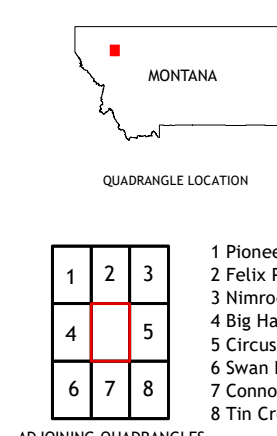
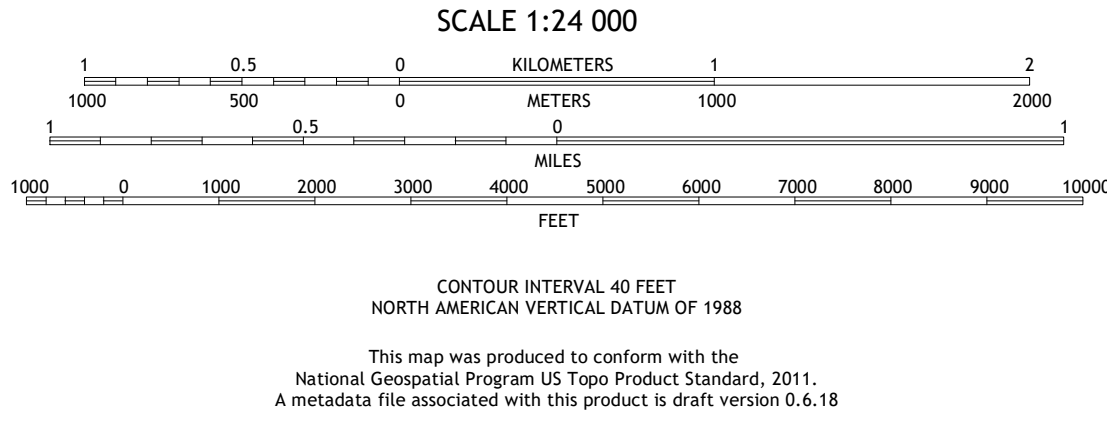
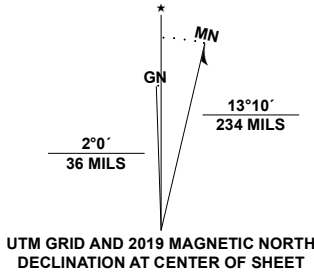


QUINTONKON QUADRANGLE
MONTANA - FLATHEAD COUNTY
7.5-MINUTE SERIES



Produced by the United States Geological Survey
North American Datum of 1983 (NAD83)
World Geodetic System of 1984 (WGS84). Projection and
1 000-meter grid: Universal Transverse Mercator, Zone 12U12T
This map is not a legal document. Boundaries may be
generalized for this map scale. Private lands within government
reservations may not be shown. Obtain permission before
entering private lands.

Imagery.....NAIP, Not Available
Roads.....U.S. Census Bureau, Not Available
Roads within US Forest Service Lands.....FS Topo Data
with limited Forest Service updates, 2013
Names.....Multiple sources; see metadata file
Hydrography.....National Hydrography Dataset, 2002 - 2019
Contours.....National Elevation Dataset, 1999 - 2001
Boundaries.....Multiple sources; see metadata file
Public Land Survey System.....BLM, 2018
Wetlands.....FWS National Wetlands Inventory Not Available



QUINTONKON, MT
2020

