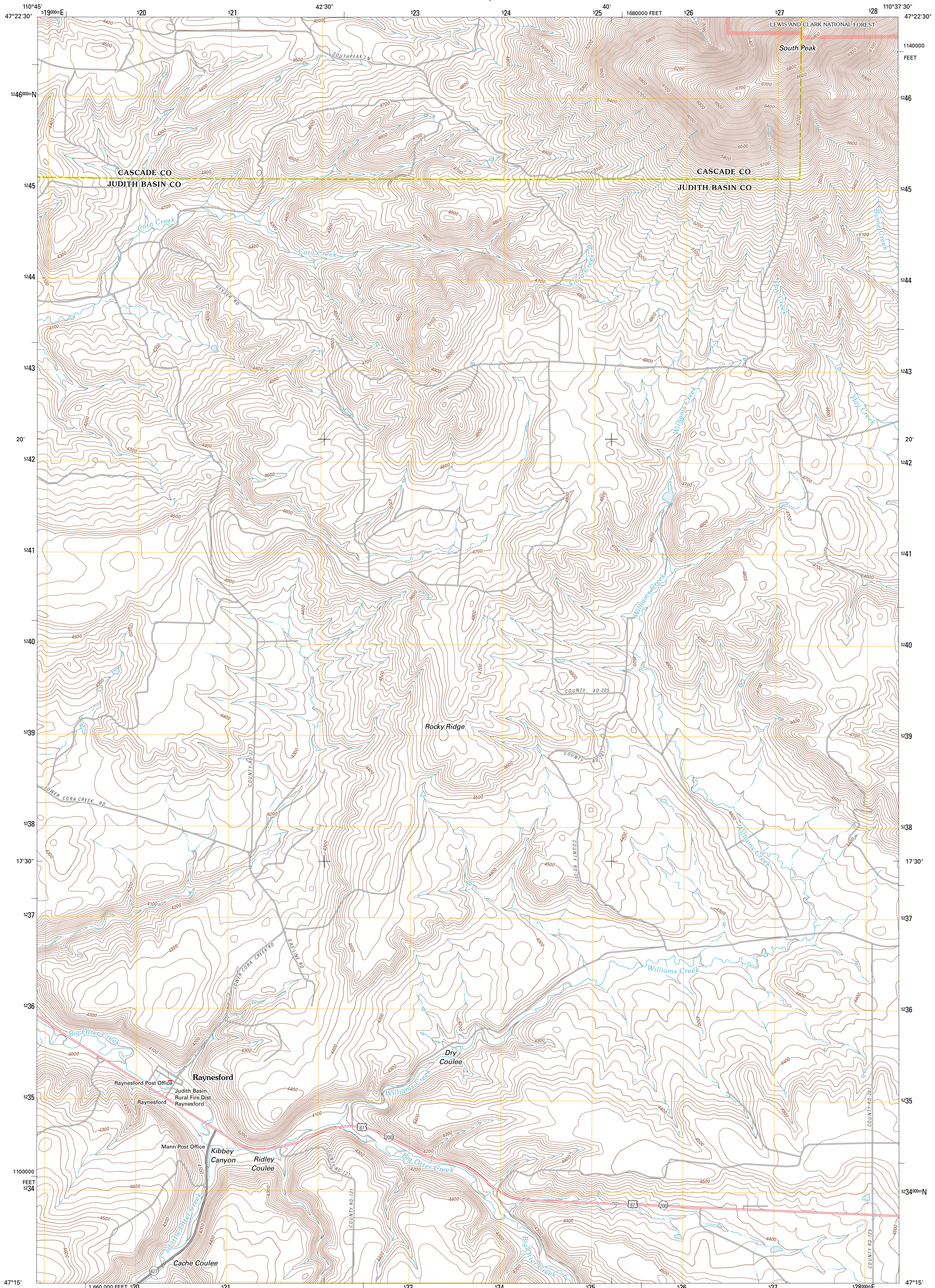




U.S. DEPARTMENT OF THE INTERIOR  
U. S. GEOLOGICAL SURVEY

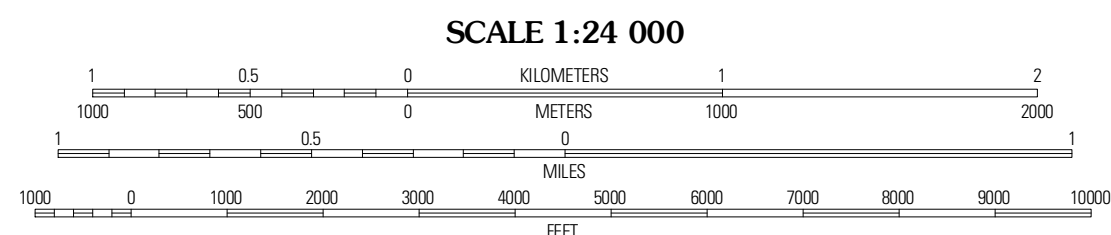
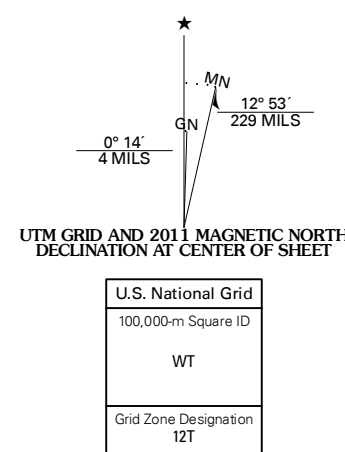


RAYNESFORD QUADRANGLE  
MONTANA  
7.5-MINUTE SERIES



Produced by the United States Geological Survey  
North American Datum of 1983 (NAD83)  
World Geodetic System of 1984 (WGS84). Projection and  
1 000-meter grid: Universal Transverse Mercator, Zone 12T  
10 000-foot ticks: Montana Coordinate System of 1983

Imagery: NIP, June 2009  
Roads: ©2006-2010 Tele Atlas  
Roads within US Forest Service Lands: FSTopo Data  
with limited Forest Service updates, 2009  
Names: GNIS, 2010  
Hydrography: National Hydrography Dataset, 2009  
Contours: National Elevation Dataset, 2006  
Boundaries: Census, IBWC, IBC, USGS, 1972 - 2010



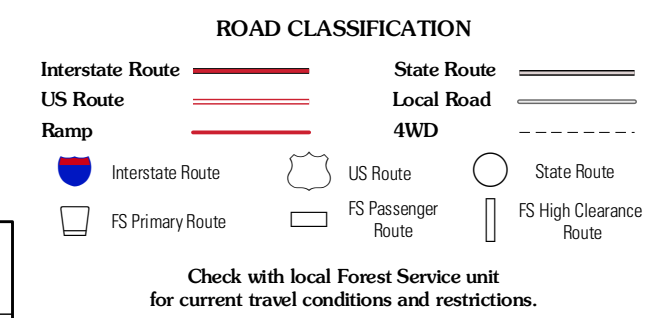
CONTOUR INTERVAL 20 FEET  
NORTH AMERICAN VERTICAL DATUM OF 1988  
This map was produced to conform with version 0.5.10  
of the USGS US Topo Product Standard.  
A metadata file associated with this product is draft version 0.5.16



QUADRANGLE LOCATION

Belt NE	Highwood Bulky	Arrow Peak
Bythe	Raynesford	Byrne Creek
Monarch NE	Limestone Butte	The Arch

ADJOINING 7.5' QUADRANGLES



RAYNESFORD, MT  
2011