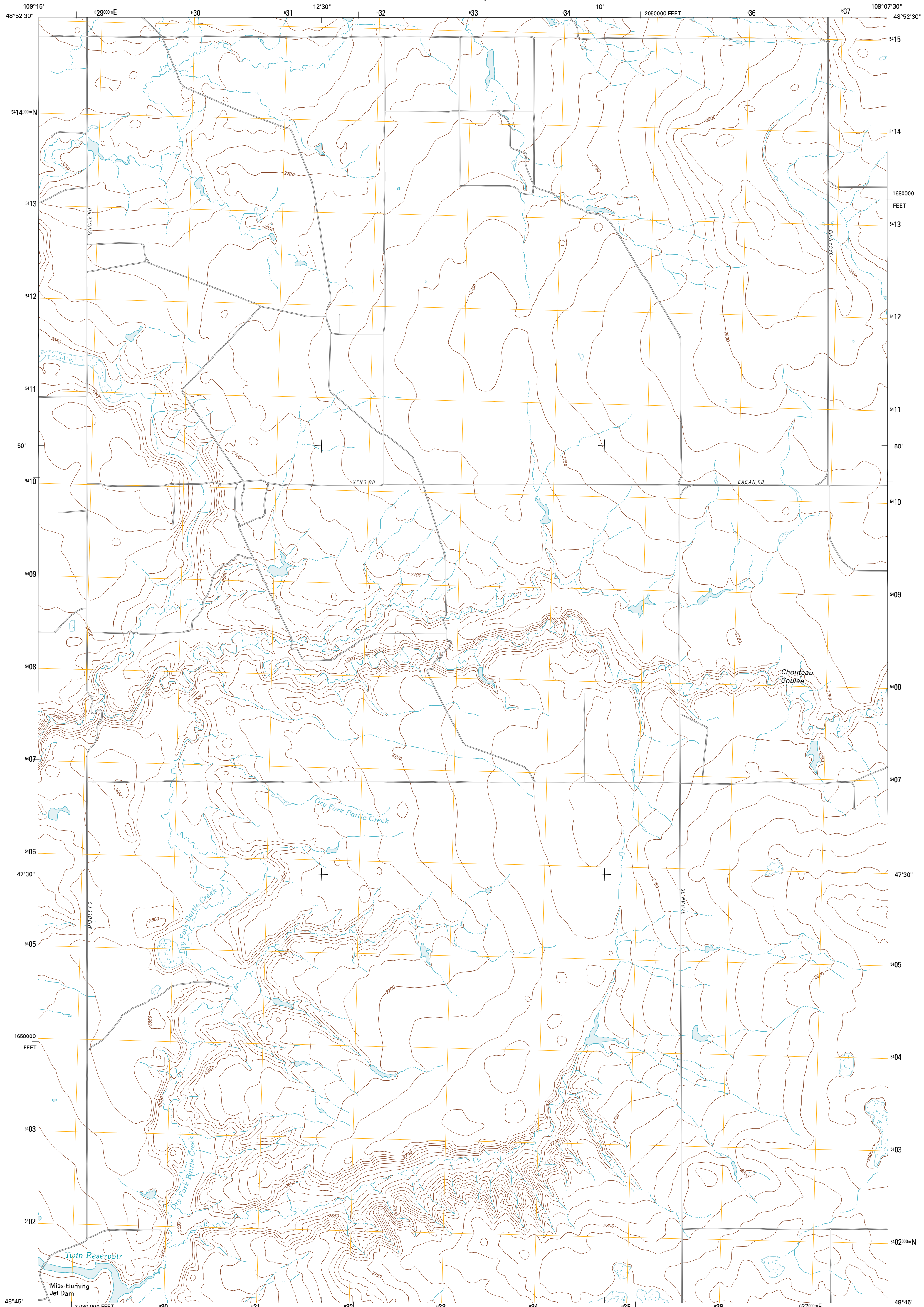




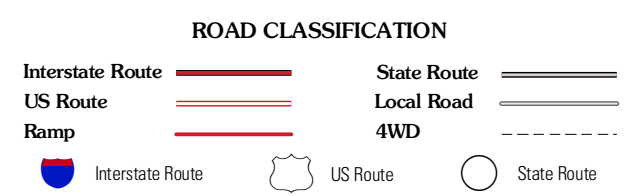
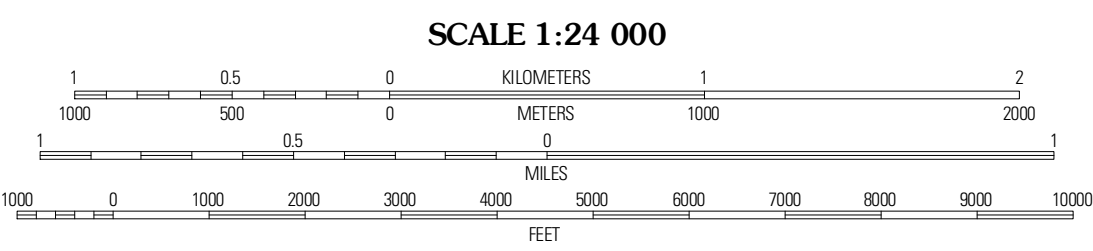
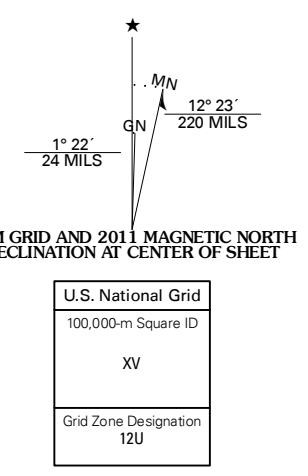
U.S. DEPARTMENT OF THE INTERIOR  
U. S. GEOLOGICAL SURVEY



RICHMOND RESERVOIR SW QUADRANGLE  
MONTANA-BLAINE CO.  
7.5-MINUTE SERIES



Produced by the United States Geological Survey  
North American Datum of 1983 (NAD83)  
World Geodetic System of 1984 (WGS84). Projection and  
1 000-meter grid: Universal Transverse Mercator, Zone 12U  
10 000-foot ticks: Montana Coordinate System of 1983



Imagery.....NAIP, August 2009  
Roads.....©2006-2010 Tele Atlas  
Names.....National Hydrography Dataset, 2010  
Hydrography.....National Hydrography Dataset, 2009  
Contours.....National Elevation Dataset, 2008  
Boundaries.....Census, IBWC, IBC, USGS, 1972 - 2010

UTM GRID AND 2011 MAGNETIC NORTH  
DECLINATION AT CENTER OF SHEET  
U.S. National Grid  
100,000-m Square ID  
XV  
Grid Zone Designation  
12U

CONTOUR INTERVAL 10 FEET  
NORTH AMERICAN VERTICAL DATUM OF 1988  
This map was produced to conform with version 0.5.10  
of the USGS US Topo Product Standard.  
A metadata file associated with this product is draft version 0.5.16

ADJOINING 7.5 QUADRANGLES

North Chinook Reservoir NE	Richmond Reservoir NW	Richmond Reservoir NE
North Chinook Reservoir	Richmond Reservoir SW	Richmond Reservoir
Telescope Coulee	Rabbit Hills	Tule Lake

RICHMOND RESERVOIR SW, MT  
2011