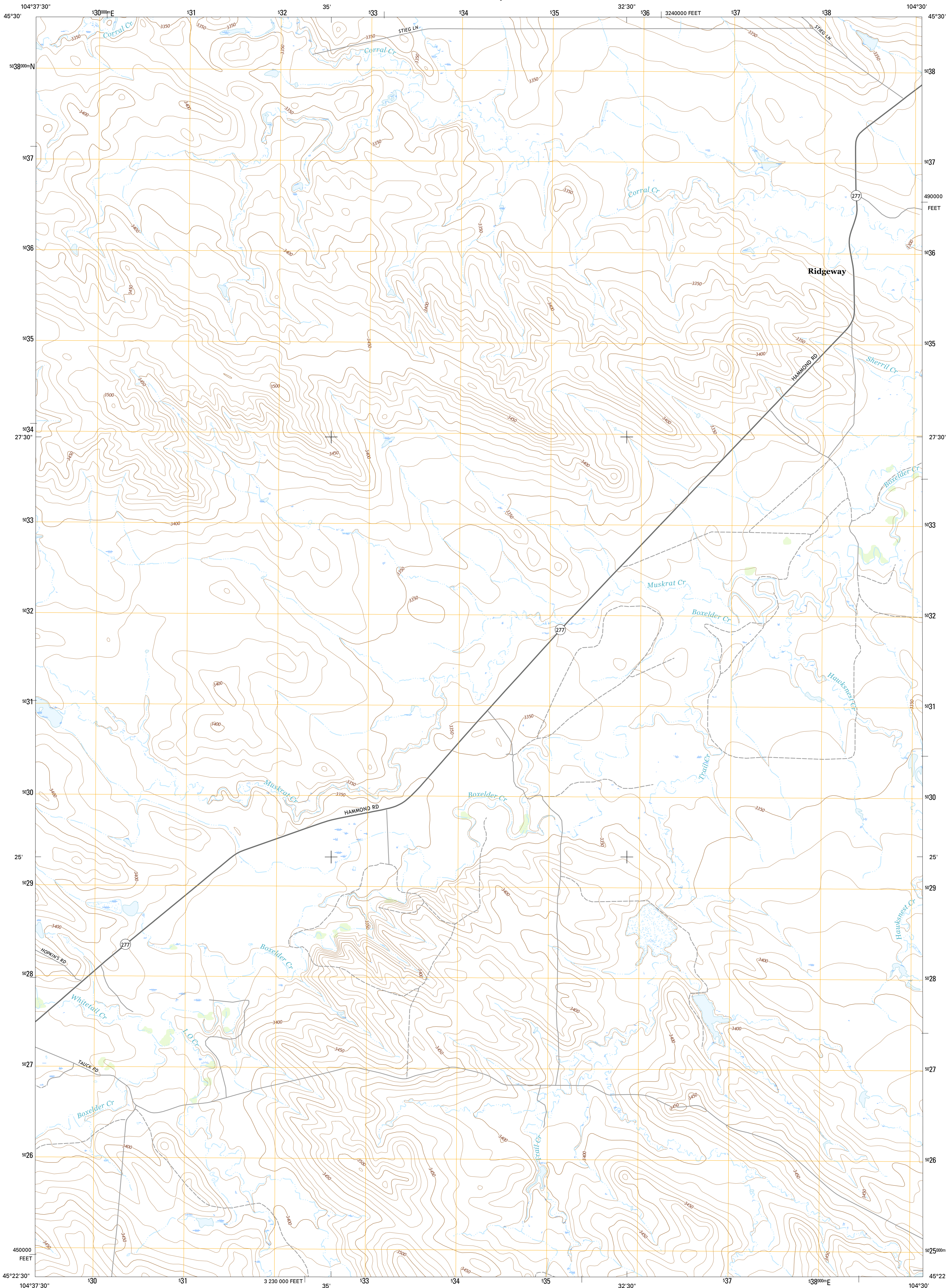




U.S. DEPARTMENT OF THE INTERIOR
U.S. GEOLOGICAL SURVEY



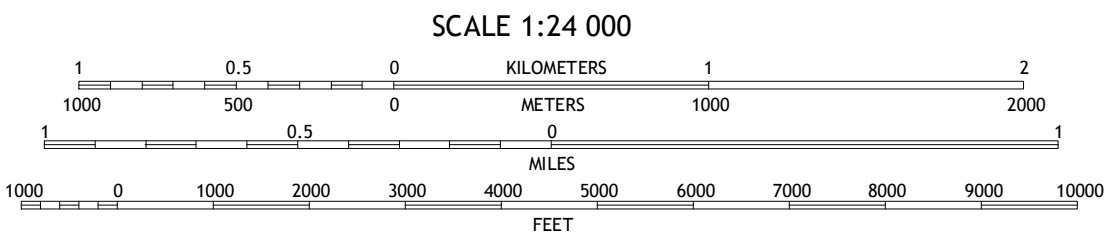
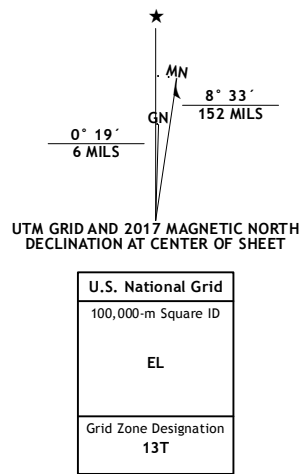
RIDGWAY QUADRANGLE
MONTANA-CARTER CO.
7.5-MINUTE SERIES



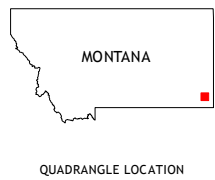
Produced by the United States Geological Survey
North American Datum of 1983 (NAD83)
World Geodetic System of 1984 (WGS84). Projection and
1 000-meter grid: Universal Transverse Mercator, Zone 13T
10 000-foot ticks: Montana Coordinate System of 1983

This map is not a legal document. Boundaries may be
generalized for this map scale. Private lands within government
reservations may not be shown. Obtain permission before
entering private lands.

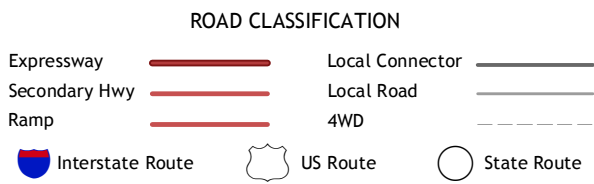
Imagery.....NAIP, January 2016
Roads.....U.S. Census Bureau, 2015 - 2016
Names.....National Hydrography Dataset, 2016
Hydrography.....National Elevation Dataset, 2009
Contours.....Multiple sources; see metadata file 1972 - 2016
Boundaries.....BLM, 2016
Public Land Survey System.....BLM, 2016
Wetlands.....FWS National Wetlands Inventory 1977 - 2014



CONTOUR INTERVAL 10 FEET
NORTH AMERICAN VERTICAL DATUM OF 1988
This map was produced to conform with the
National Geospatial Program US Topo Product Standard, 2011.
A metadata file associated with this product is draft version 0.6.19



QUADRANGLE LOCATION



1	2	3
4	5	
6	7	8

ADJOINING QUADRANGLES

1 Dutchman Creek
2 Ikey Creek
3 School Section Creek
4 Whitetail Creek
5 Prairie Dog Creek
6 Tip Top Butte
7 Potato Buttes
8 Finger Buttes West

RIDGWAY, MT
2017

