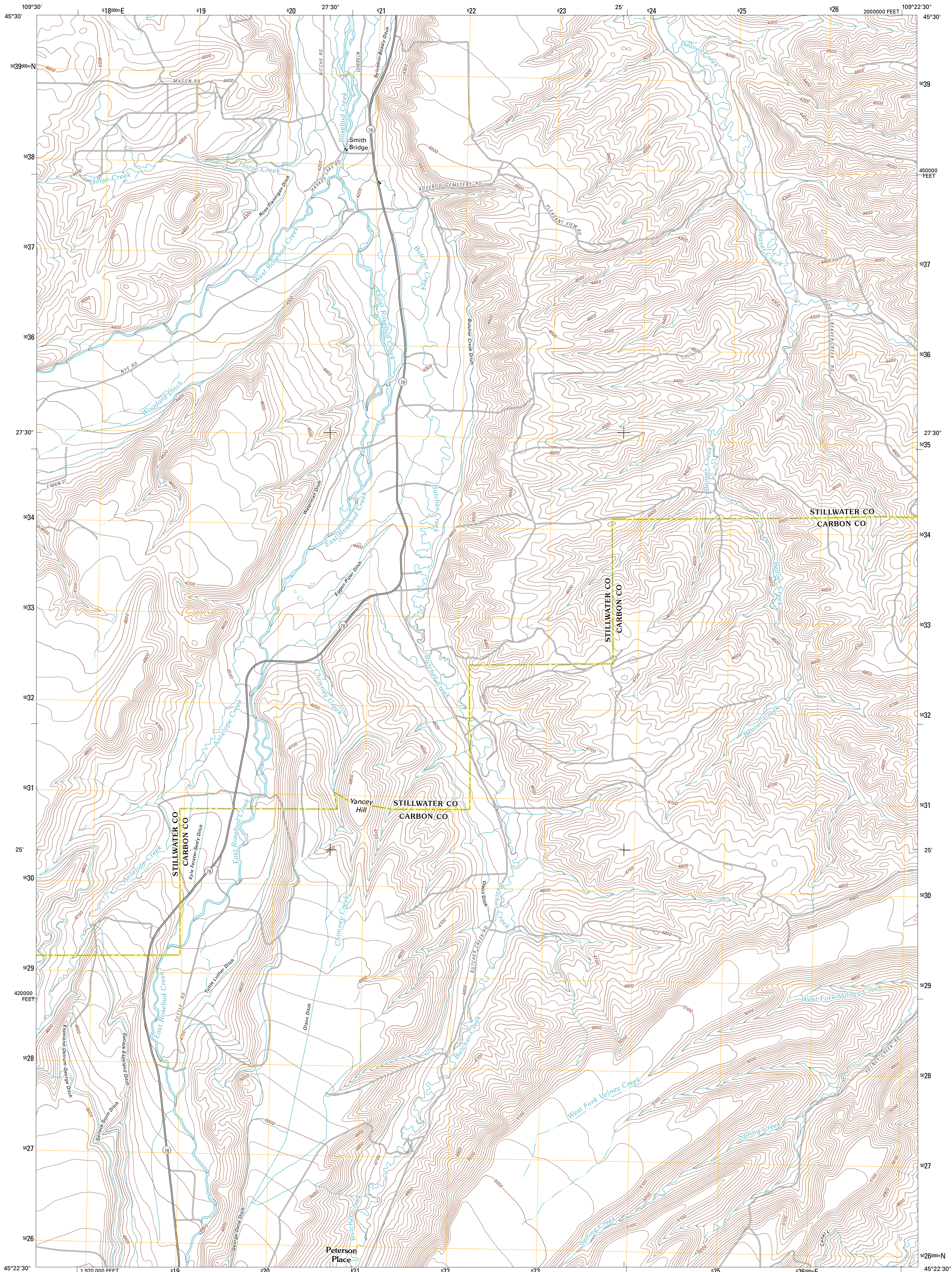




U.S. DEPARTMENT OF THE INTERIOR  
U. S. GEOLOGICAL SURVEY

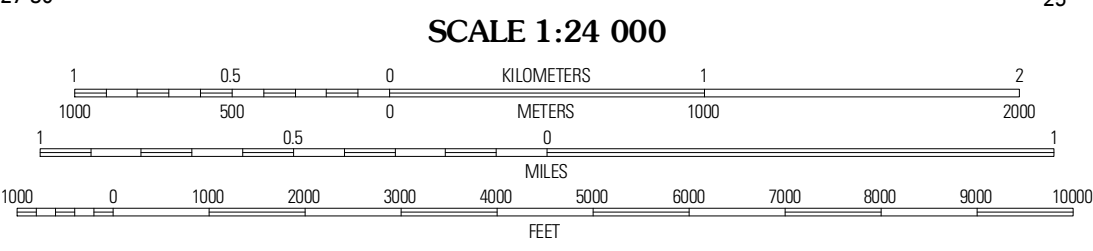
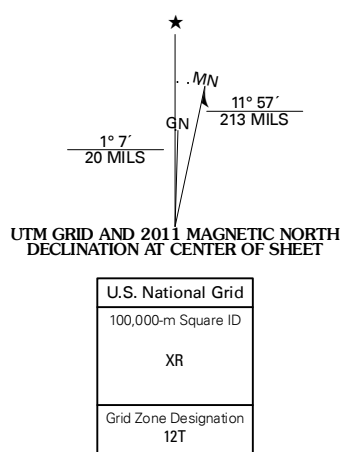


ROSCOE NW QUADRANGLE  
MONTANA  
7.5-MINUTE SERIES

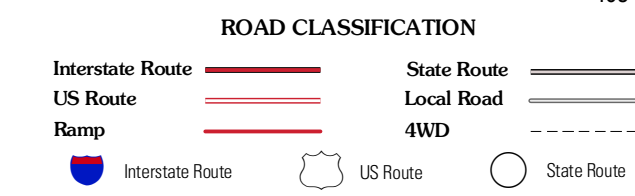


Produced by the United States Geological Survey  
North American Datum of 1983 (NAD83)  
World Geodetic System of 1984 (WGS84). Projection and  
1 000-meter grid: Universal Transverse Mercator, Zone 12T  
10 000-foot ticks: Montana Coordinate System of 1983

Imagery.....NAIP, July 2009  
Roads.....©2006-2010 Tele Atlas  
Names.....©2006-2010 Tele Atlas  
Hydrography.....National Hydrography Dataset, 2009  
Contours.....National Elevation Dataset, 2001  
Boundaries.....Census, IBWC, IBC, USGS, 1972 - 2010



CONTOUR INTERVAL 20 FEET  
NORTH AMERICAN VERTICAL DATUM OF 1988  
This map was produced to conform with version 0.5.10  
of the USGS US Topo Product Standard.  
A metadata file associated with this product is draft version 0.5.16



QUADRANGLE LOCATION

Sandborn Creek	Absarokee	Whitfield School
Fishtail	Roscoe NW	Roscoe NE
Mickey Ranch	Roscoe	Castagne

ROSCOE NW, MT  
2011

ADJOINING 7.5 QUADRANGLES