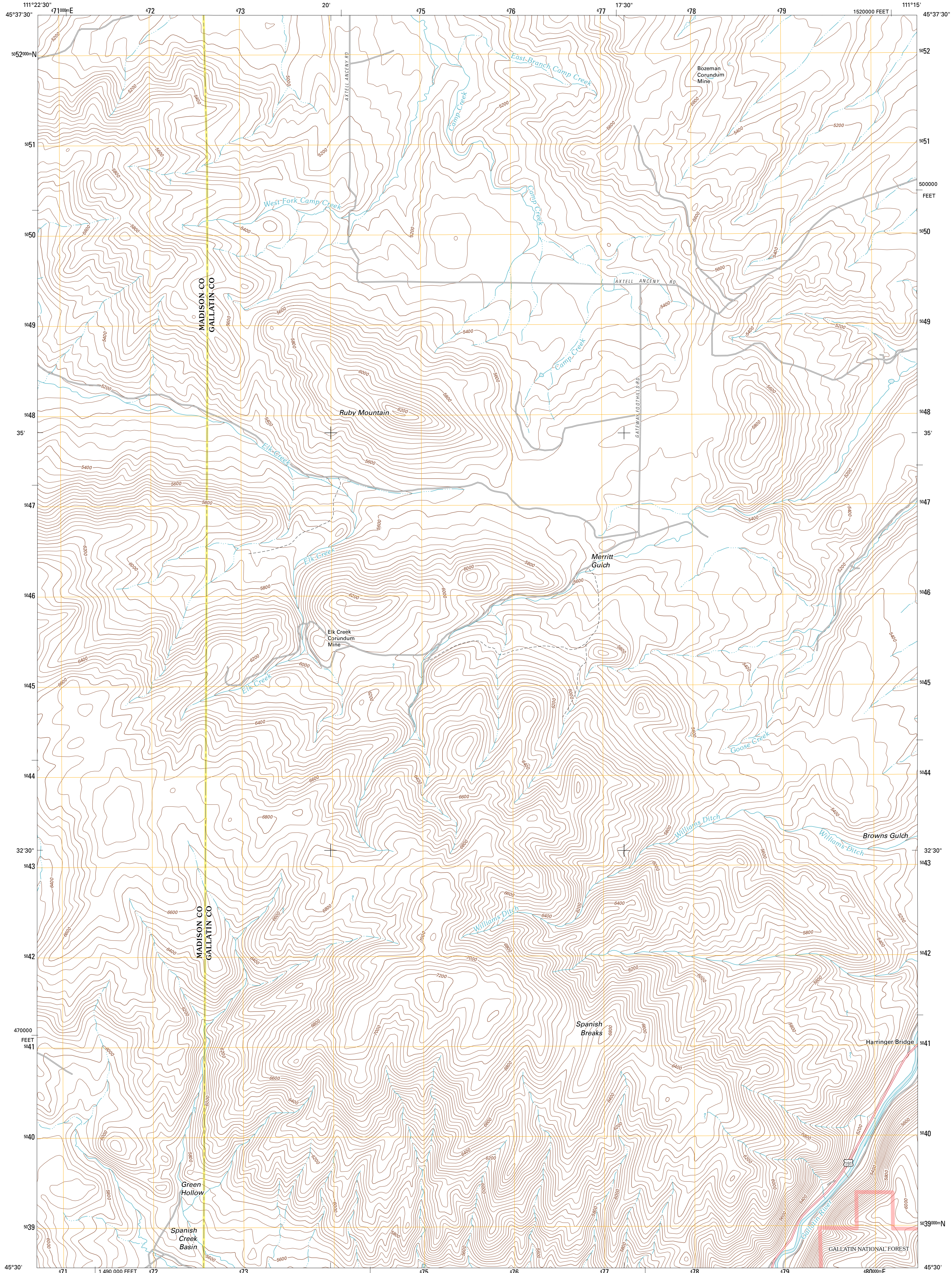




U.S. DEPARTMENT OF THE INTERIOR  
U. S. GEOLOGICAL SURVEY

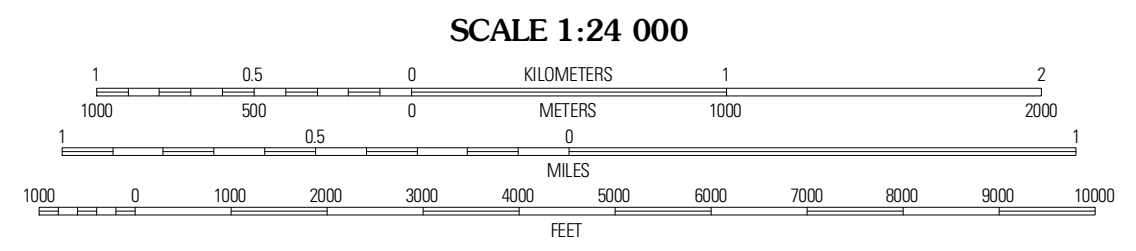
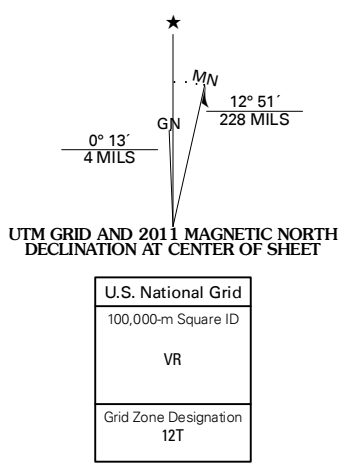


RUBY MOUNTAIN QUADRANGLE  
MONTANA  
7.5-MINUTE SERIES

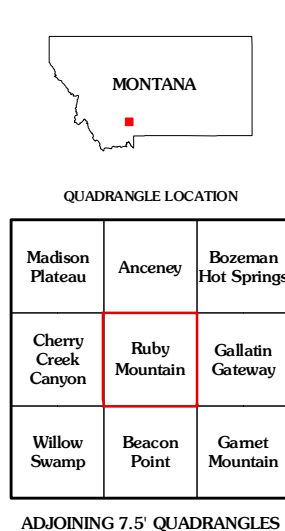


Produced by the United States Geological Survey  
North American Datum of 1983 (NAD83)  
World Geodetic System of 1984 (WGS84). Projection and  
1 000-meter grid: Universal Transverse Mercator, Zone 12T  
10 000-foot ticks: Montana Coordinate System of 1983

Imagery: NAD, June 2009  
Roads: 02/2006-2010 Tele Atlas  
Roads within US Forest Service Lands: FSTopo Data  
with limited Forest Service updates, 2009  
Names: GNIS, 2010  
Hydrography: National Hydrography Dataset, 2009  
Contours: National Elevation Dataset, 2001  
Boundaries: Census, IBWC, IBC, USGS, 1972 - 2010



CONTOUR INTERVAL 40 FEET  
NORTH AMERICAN VERTICAL DATUM OF 1988  
This map was produced to conform with version 0.5.10  
of the USGS US Topo Product Standard.  
A metadata file associated with this product is draft version 0.5.16



**ROAD CLASSIFICATION**

Interstate Route	State Route	Local Road
US Route	4WD	
Ramp		
FS Primary Route	US Route	State Route
	FS Passenger Route	FS High Clearance Route

Check with local Forest Service unit for current travel conditions and restrictions.

RUBY MOUNTAIN, MT  
2011

QUADRANGLE LOCATION

Madison Plateau	Ancestry	Bozeman Hot Springs
Cherry Creek Canyon	Ruby Mountain	Gallatin Gateway
Willow Swamp	Beacon Point	Gamet Mountain

ADJOINING 7.5 QUADRANGLES