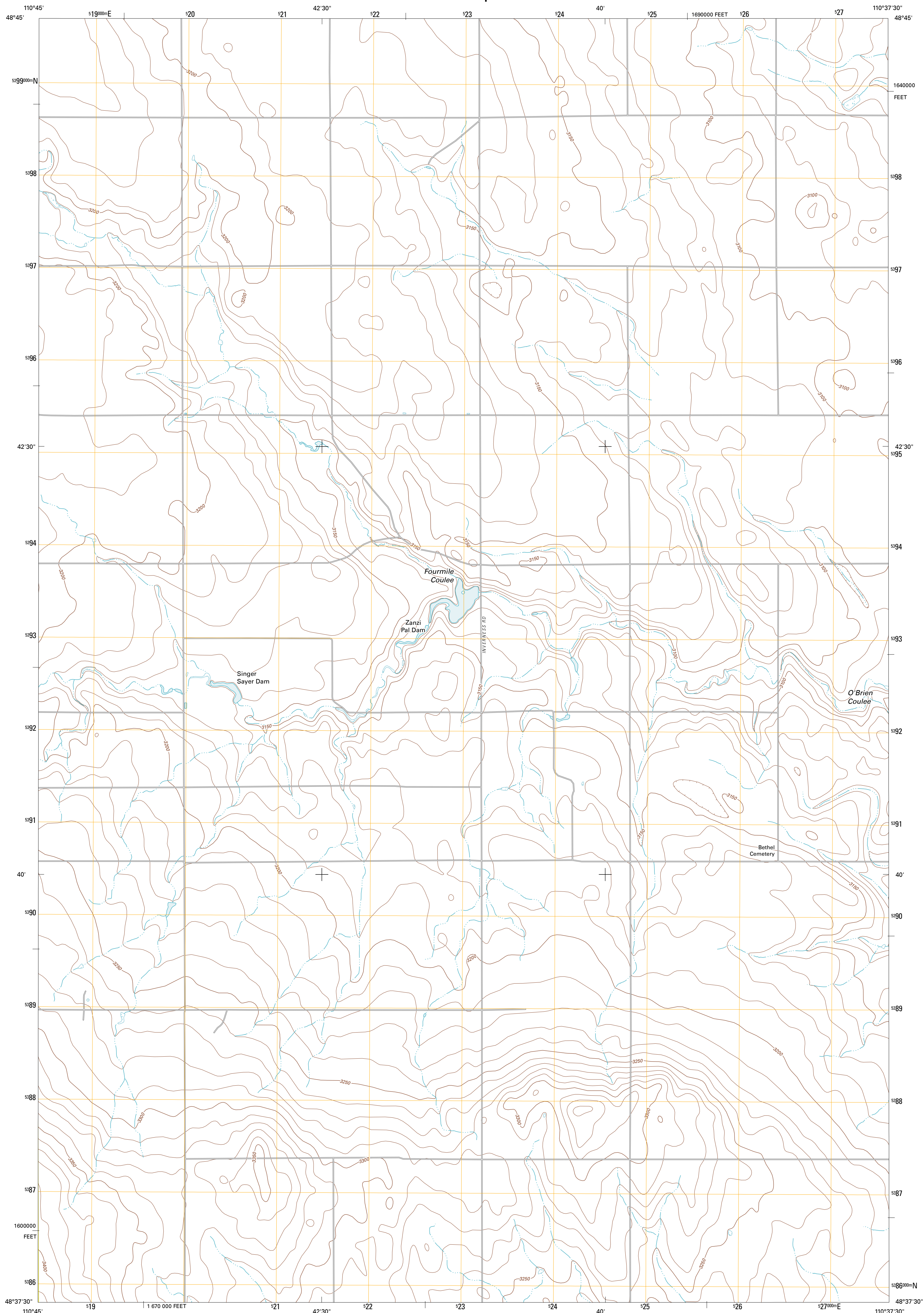




U.S. DEPARTMENT OF THE INTERIOR  
U. S. GEOLOGICAL SURVEY



RUDYARD NW QUADRANGLE  
MONTANA-HILL CO.  
7.5-MINUTE SERIES

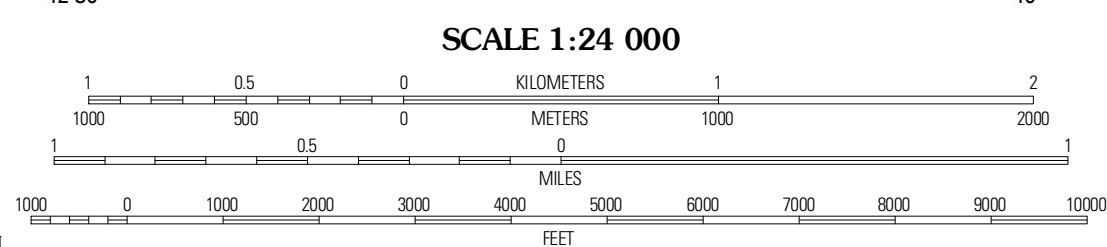


Produced by the United States Geological Survey  
North American Datum of 1983 (NAD83)  
World Geodetic System of 1984 (WGS84). Projection and  
1 000-meter grid: Universal Transverse Mercator, Zone 12U  
10 000-foot ticks: Montana Coordinate System of 1983

Imagery.....NAIP, July 2009  
Roads.....©2006-2010 Tele Atlas  
Names.....National Hydrography Dataset, 2010  
Hydrography.....National Hydrography Dataset, 2009  
Contours.....National Elevation Dataset, 2008  
Boundaries.....Census, IBWC, IBC, USGS, 1972 - 2010

UTM GRID AND 2011 MAGNETIC NORTH  
DECLINATION AT CENTER OF SHEET

U.S. National Grid	12U
100,000-m Square ID	WU
Grid Zone Designation	12U



SCALE 1:24 000  
CONTOUR INTERVAL 10 FEET  
NORTH AMERICAN VERTICAL DATUM OF 1988  
This map was produced to conform with version 0.5.10  
of the USGS US Topo Product Standard.  
A metadata file associated with this product is draft version 0.5.16



QUADRANGLE LOCATION

Bolton Coulee SE	Goldstone SW	McKinsey Reservoir West
Chester NE	<b>Rudyard NW</b>	Rudyard NE
Joplin	Inverness	Rudyard

ROAD CLASSIFICATION

Interstate Route	State Route
US Route	Local Road
Ramp	4WD

RUDYARD NW, MT  
2011

ADJOINING 7.5 QUADRANGLES