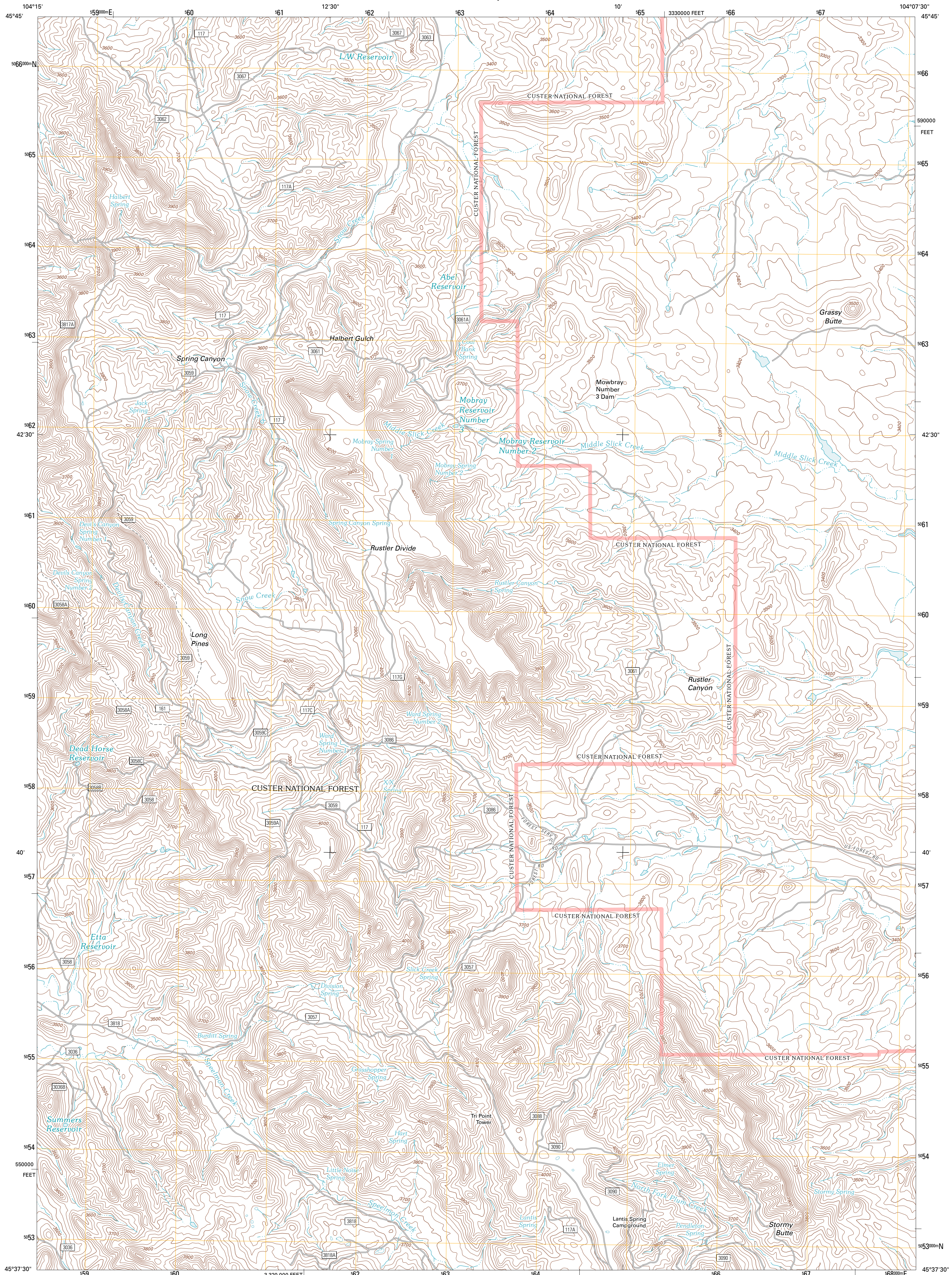




U.S. DEPARTMENT OF THE INTERIOR  
U. S. GEOLOGICAL SURVEY

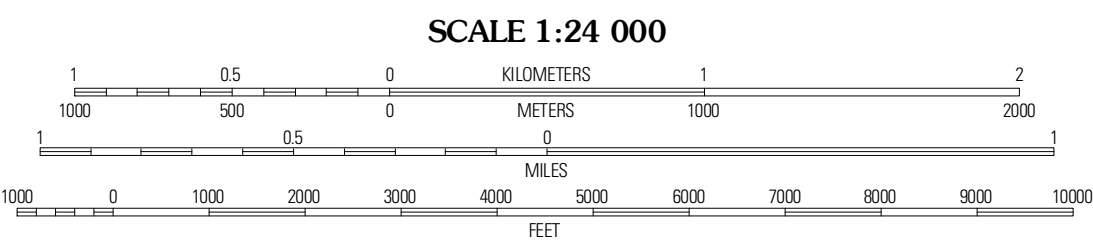
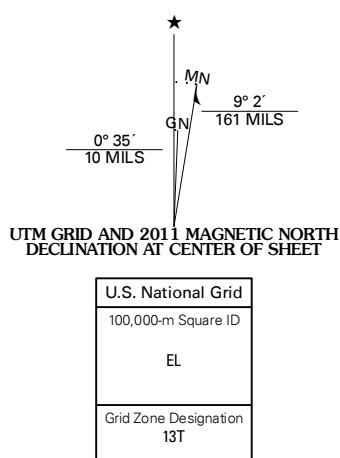


RUSTLER DIVIDE QUADRANGLE  
MONTANA-CARTER CO.  
7.5-MINUTE SERIES

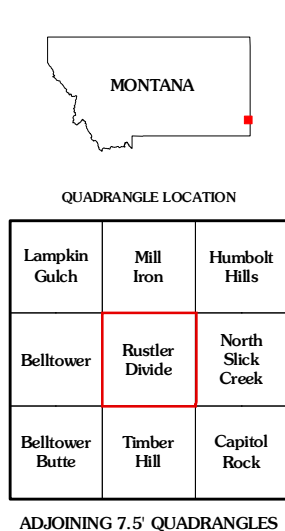


Produced by the United States Geological Survey  
North American Datum of 1983 (NAD83)  
World Geodetic System of 1984 (WGS84). Projection and  
1 000-meter grid: Universal Transverse Mercator, Zone 13T  
10 000-foot ticks: Montana Coordinate System of 1983

Imagery: NADP, July 2009  
Roads: 1:2006-2010 Tele Atlas  
Roads within US Forest Service Lands: FSTopo Data  
with limited Forest Service updates, 2009  
Names: GNIS, 2010  
Hydrography: National Hydrography Dataset, 2009  
Contours: National Elevation Dataset, 2009  
Boundaries: Census, IBWC, IBC, USGS, 1972 - 2010

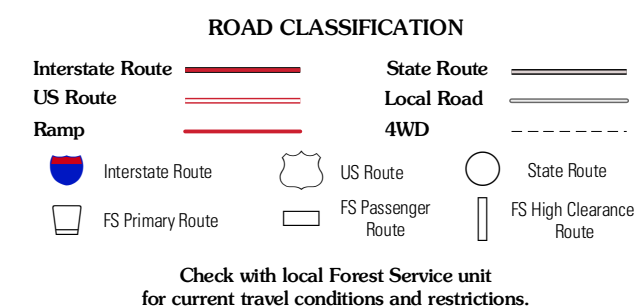


CONTOUR INTERVAL 40 FEET  
NORTH AMERICAN VERTICAL DATUM OF 1988  
This map was produced to conform with version 0.5.10  
of the USGS US Topo Product Standard.  
A metadata file associated with this product is draft version 0.5.16



QUADRANGLE LOCATION

Lampkin Gulch	Mill Iron	Humbolt Hills
Bellflower	Rustler Divide	North Slick Creek
Bellflower Butte	Timber Hill	Capitol Rock



Check with local Forest Service unit  
for current travel conditions and restrictions.

RUSTLER DIVIDE, MT  
2011

ADJOINING 7.5 QUADRANGLES