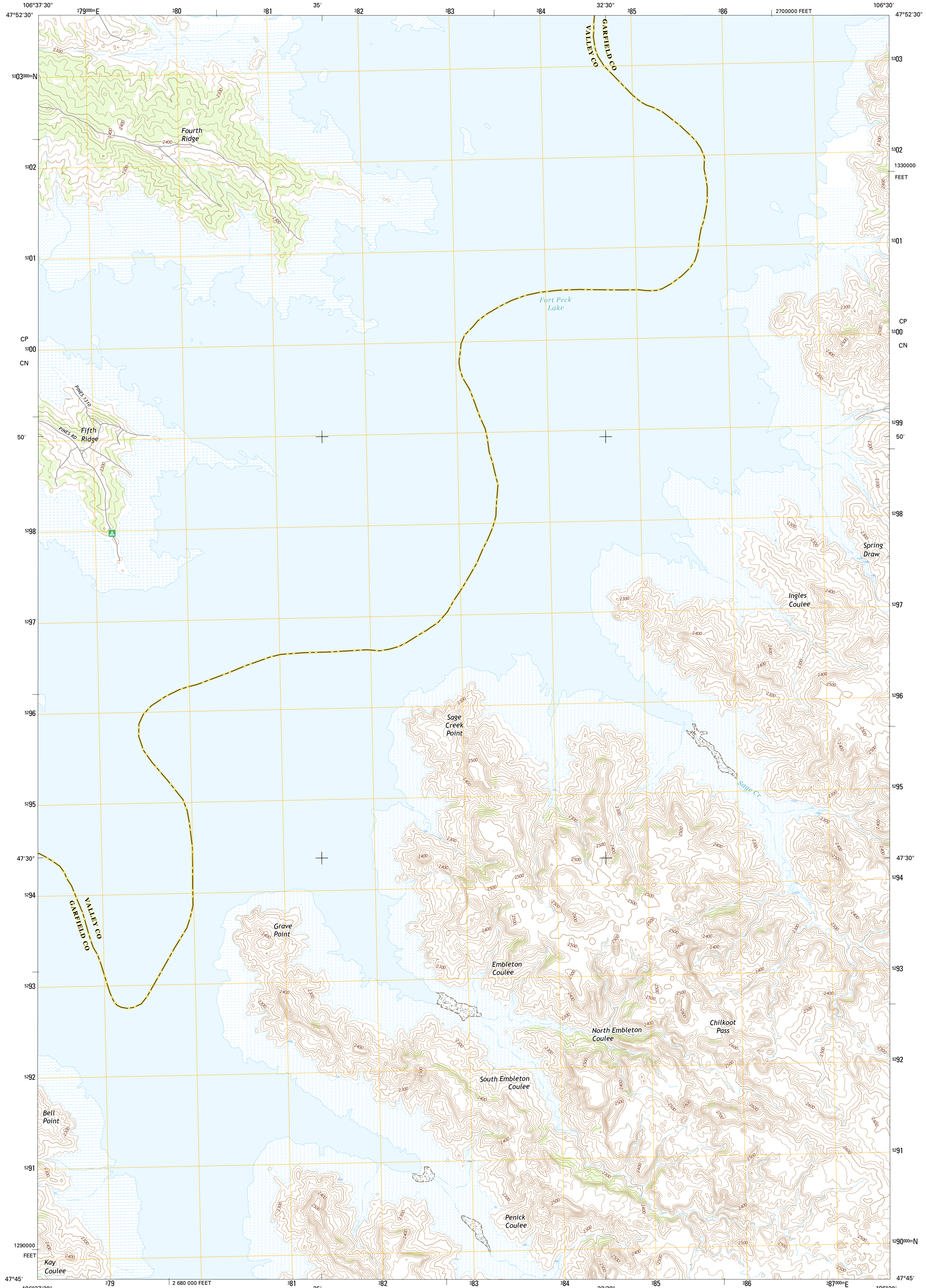




U.S. DEPARTMENT OF THE INTERIOR
U.S. GEOLOGICAL SURVEY



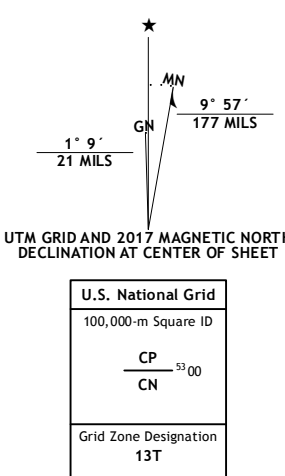
SAGE CREEK POINT QUADRANGLE
MONTANA
7.5-MINUTE SERIES



Produced by the United States Geological Survey
North American Datum of 1983 (NAD83)
World Geodetic System of 1984 (WGS84). Projection and
1 000-meter grid: Universal Transverse Mercator, Zone 13T
10 000-foot ticks: Montana Coordinate System of 1983

This map is not a legal document. Boundaries may be
generalized for this map scale. Private lands within government
reservations may not be shown. Obtain permission before
entering private lands.

ImageryNAIP, January 2016
RoadsU.S. Census Bureau, 2015 - 2016
NamesGNIS, 2016
HydrographyNational Hydrography Dataset, 2016
ContoursNational Elevation Dataset, 2010
BoundariesMultiple sources; see metadata file 1972 - 2016
Public Land Survey SystemBLM, 2016
WetlandsFWS National Wetlands Inventory 1977 - 2014



ROAD CLASSIFICATION

Expressway	Local Connector
Secondary Hwy	Local Road
Ramp	4WD
Interstate Route	US Route
	State Route

1	2	3
4	5	6
7	8	

ADJOINING QUADRANGLES

- 1 Lewis Reservoir
- 2 Skunk Coulee
- 3 York Island
- 4 Seventh Point Buttes
- 5 Norville Creek
- 6 Signal Butte
- 7 Gilbert Creek
- 8 Ash Creek West

SAGE CREEK POINT, MT
2017

