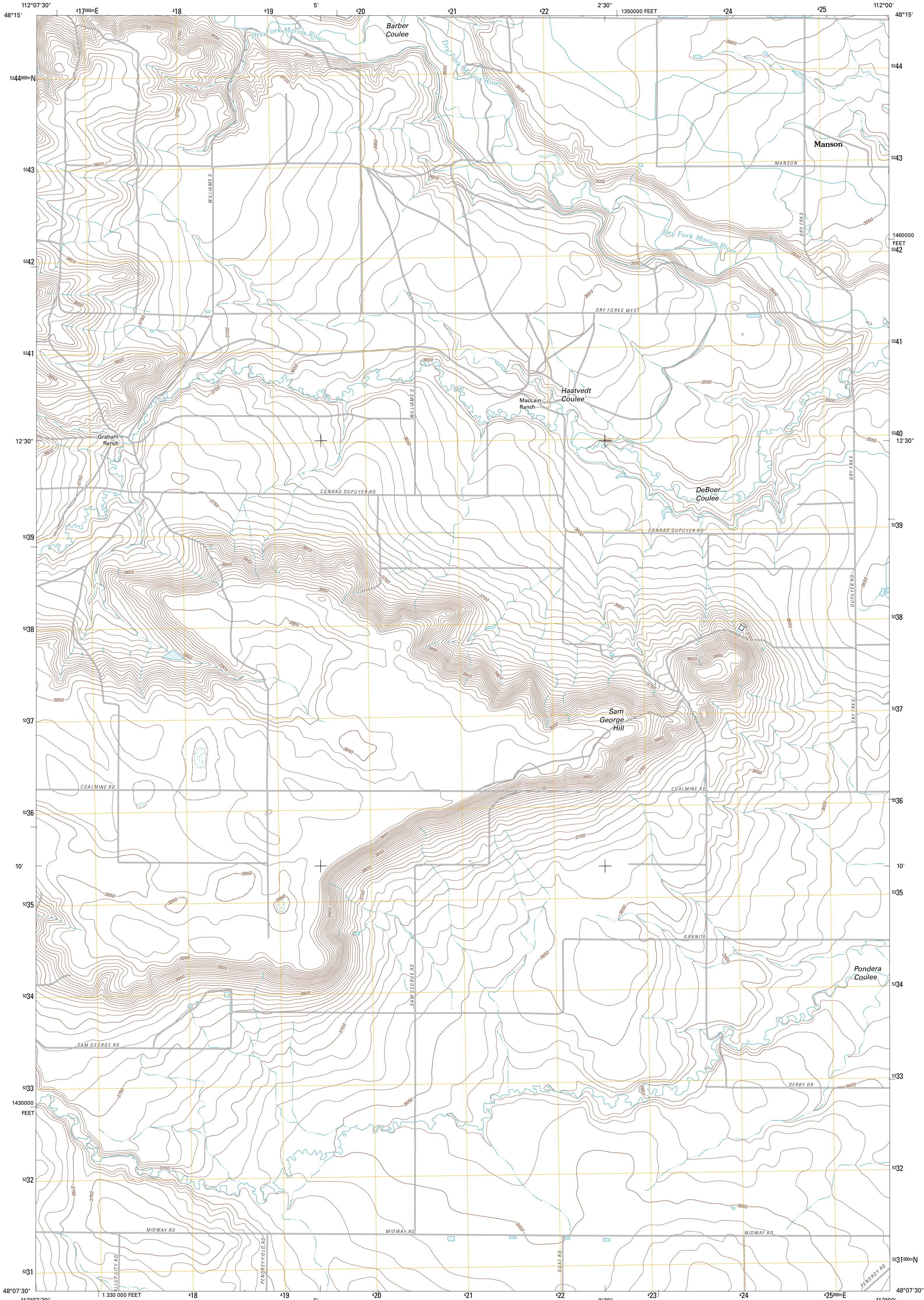




U.S. DEPARTMENT OF THE INTERIOR
U. S. GEOLOGICAL SURVEY

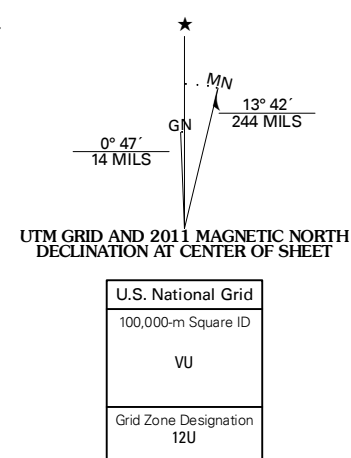


SAM GEORGE HILL QUADRANGLE
MONTANA-PONDERA CO.
7.5-MINUTE SERIES

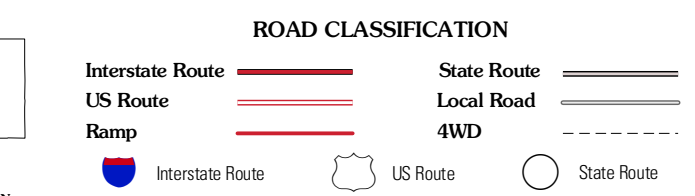
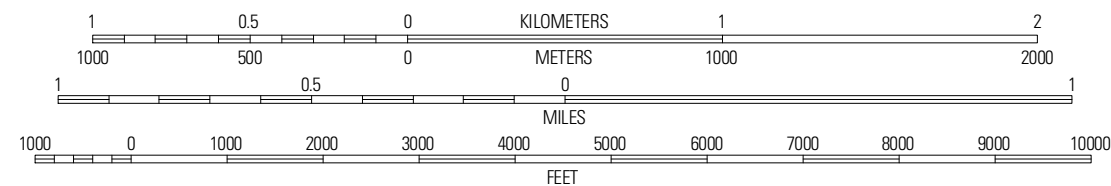


Produced by the United States Geological Survey
North American Datum of 1983 (NAD83)
World Geodetic System of 1984 (WGS84). Projection and
1 000-meter grid: Universal Transverse Mercator, Zone 12U
10 000-foot ticks: Montana Coordinate System of 1983

Imagery.....NIP, August 2009
Roads.....©2006-2010 Tele Atlas
Names.....GNIS, 2010
Hydrography.....National Hydrography Dataset, 2009
Contours.....National Elevation Dataset, 2008
Boundaries.....Census, IBWC, IBC, USGS, 1972 - 2010



SCALE 1:24 000



QUADRANGLE LOCATION

| | | |
|---------------------|-----------------|----------------|
| Valley East | Belgian Hill | Pioneer School |
| Low Man Coulee East | Sam George Hill | Conrad |
| Agawam North | Gallup City | Conrad SW |

CONTOUR INTERVAL 10 FEET
NORTH AMERICAN VERTICAL DATUM OF 1988

This map was produced to conform with version 0.5.10
of the USGS US Topo Product Standard.
A metadata file associated with this product is draft version 0.5.16

SAM GEORGE HILL, MT
2011

ADJOINING 7.5' QUADRANGLES