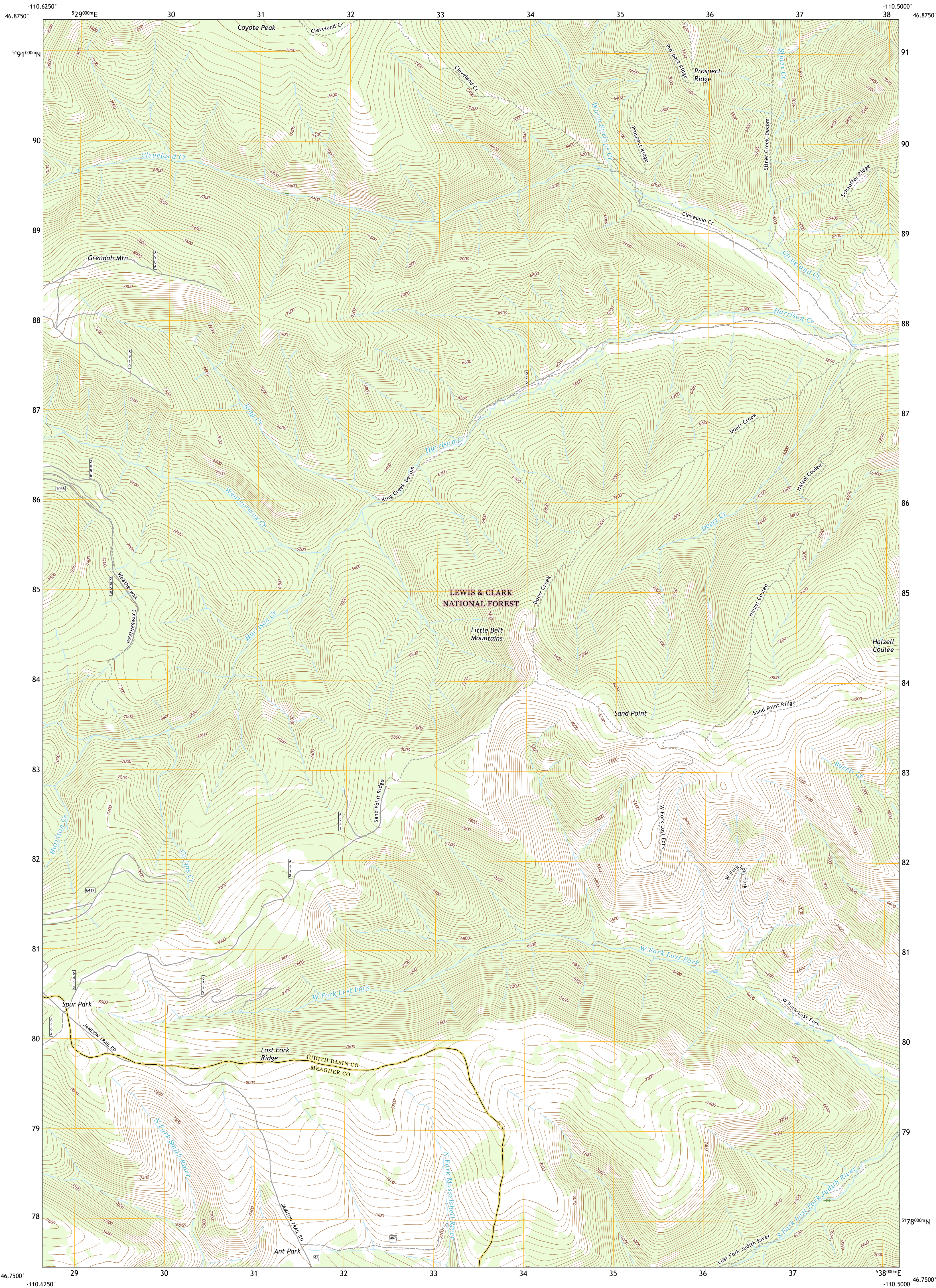




U.S. DEPARTMENT OF THE INTERIOR  
U.S. GEOLOGICAL SURVEY



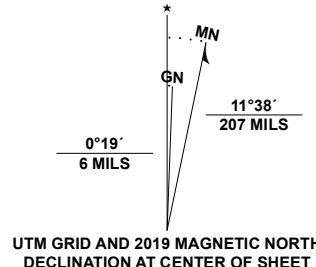
SAND POINT QUADRANGLE  
MONTANA  
7.5-MINUTE SERIES



Produced by the United States Geological Survey

North American Datum of 1983 (NAD83)  
World Geodetic System of 1984 (WGS84). Projection and  
1 000-meter grid-Universal Transverse Mercator, Zone 12T  
This map is not a legal document. Boundaries may be  
generalized for this map scale. Private lands within government  
reservations may not be shown. Obtain permission before  
entering private lands.

Imagery.....NAIP, July 2015 - September 2015  
Roads.....U.S. Census Bureau, Not Available  
Roads within US Forest Service Lands.....FSTopo Data  
Names.....with limited Forest Service updates, 2013 - 2014  
Contours.....GNIS, 1980 - 2020  
Hydrography.....National Hydrography Dataset, 1899 - 2019  
Public Land System.....National Elevation Dataset, 2006  
Wetlands.....Multiple sources: see metadata file 2018 - 2019  
Wetlands.....BLM, 2018  
Wetlands.....FWS National Wetlands Inventory 1984 - 2009



1	2	3
4	5	6
7	8	9

- 1 Nelhart
- 2 Yogo Peak
- 3 Bandbox Mountain
- 4 Kings Hill
- 5 Etlen Spring
- 6 Volcano Butte
- 7 Hoover Spring
- 8 Russian Flat

ROAD CLASSIFICATION	
Expressway	Local Connector
Secondary Hwy	Local Road
Ramp	4WD
Interstate Route	US Route
FS Primary Route	FS Passenger Route
	FS High Clearance Route
	State Route

Check with local Forest Service unit  
for current travel conditions and restrictions.

SAND POINT, MT  
2020

