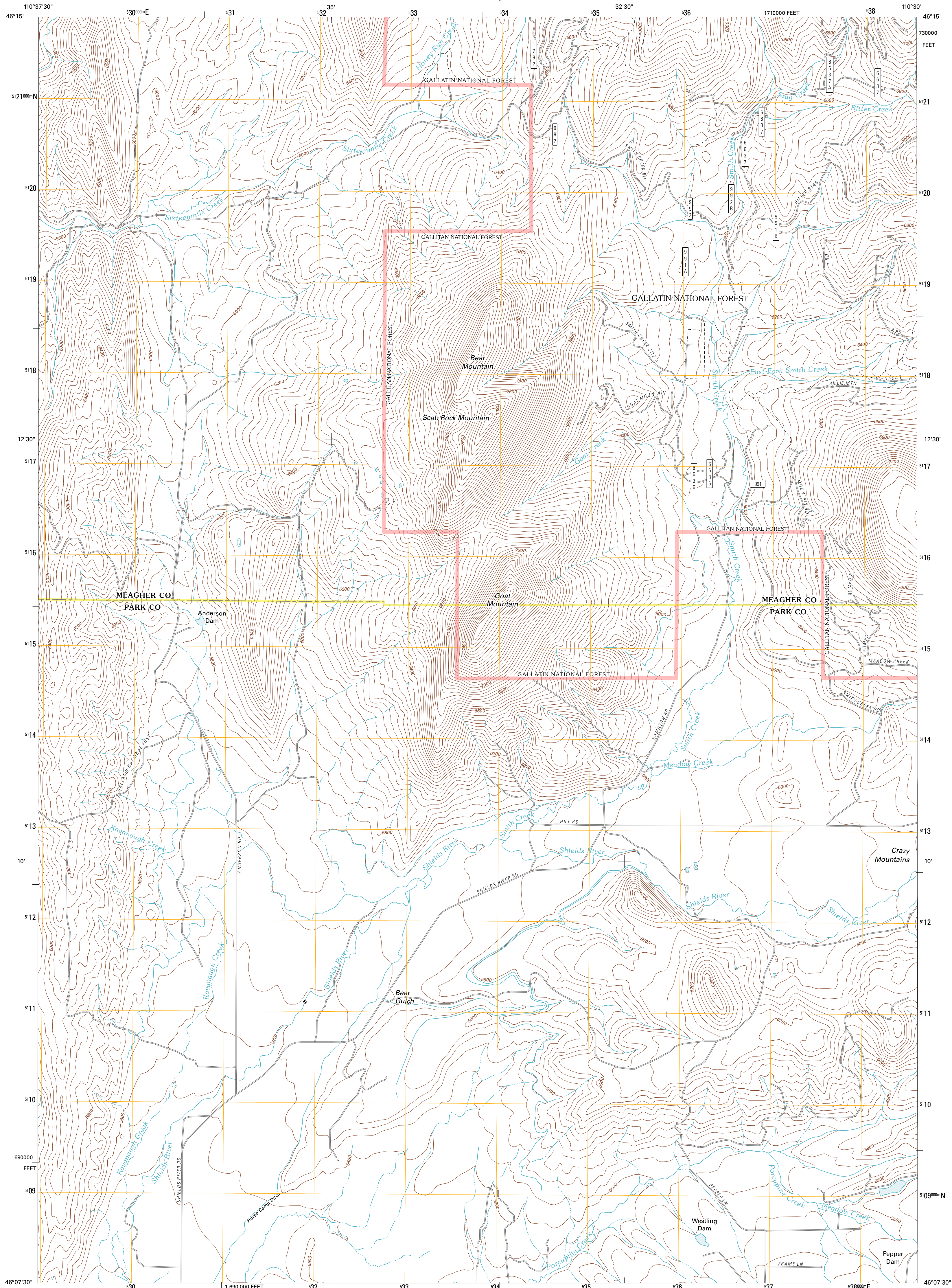




U.S. DEPARTMENT OF THE INTERIOR  
U. S. GEOLOGICAL SURVEY

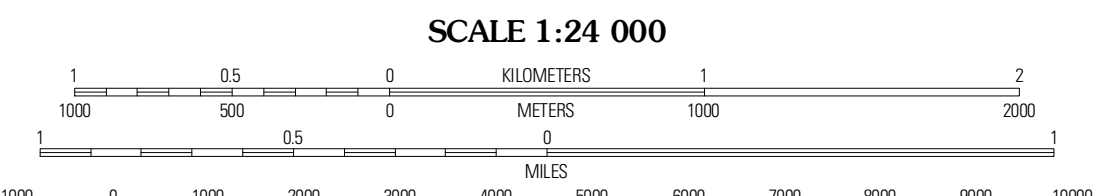
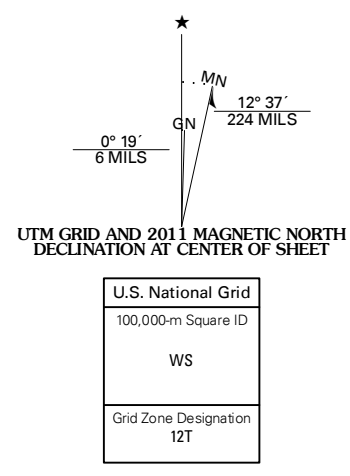


SCAB ROCK MOUNTAIN QUADRANGLE  
MONTANA  
7.5-MINUTE SERIES



Produced by the United States Geological Survey  
North American Datum of 1983 (NAD83)  
World Geodetic System of 1984 (WGS84). Projection and  
1 000-meter grid: Universal Transverse Mercator, Zone 12T  
10 000-foot ticks: Montana Coordinate System of 1983

Imagery: NADP, July 2009  
Roads: ©2006-2010 Tele Atlas  
Roads within US Forest Service Lands: FSTopo Data  
with limited Forest Service updates, 2009  
Names: ©2006-2010 Tele Atlas  
Hydrography: National Hydrography Dataset, 2009  
Contours: National Elevation Dataset, 2006  
Boundaries: Census, IBWC, IBC, USGS, 1972 - 2010



CONTOUR INTERVAL 40 FEET  
NORTH AMERICAN VERTICAL DATUM OF 1988  
This map was produced to conform with version 0.5.10  
of the USGS US Topo Product Standard.  
A metadata file associated with this product is draft version 0.5.16

**ROAD CLASSIFICATION**

Interstate Route	State Route
US Route	Local Road
Ramp	AWD

**ROAD CLEARANCE**

Interstate Route	US Route	State Route
FS Primary Route	FS Passenger Route	FS High Clearance Route

Check with local Forest Service unit for current travel conditions and restrictions.

**SCAB ROCK MOUNTAIN, MT  
2011**

**ADJOINING 7.5 QUADRANGLES**

Hamen	Rimrock Divide	Lebo
Wolf Hill	Scab Rock Mountain	Virginia Peak
Cottonwood Reservoir	Lena Creek	Campfire Lake