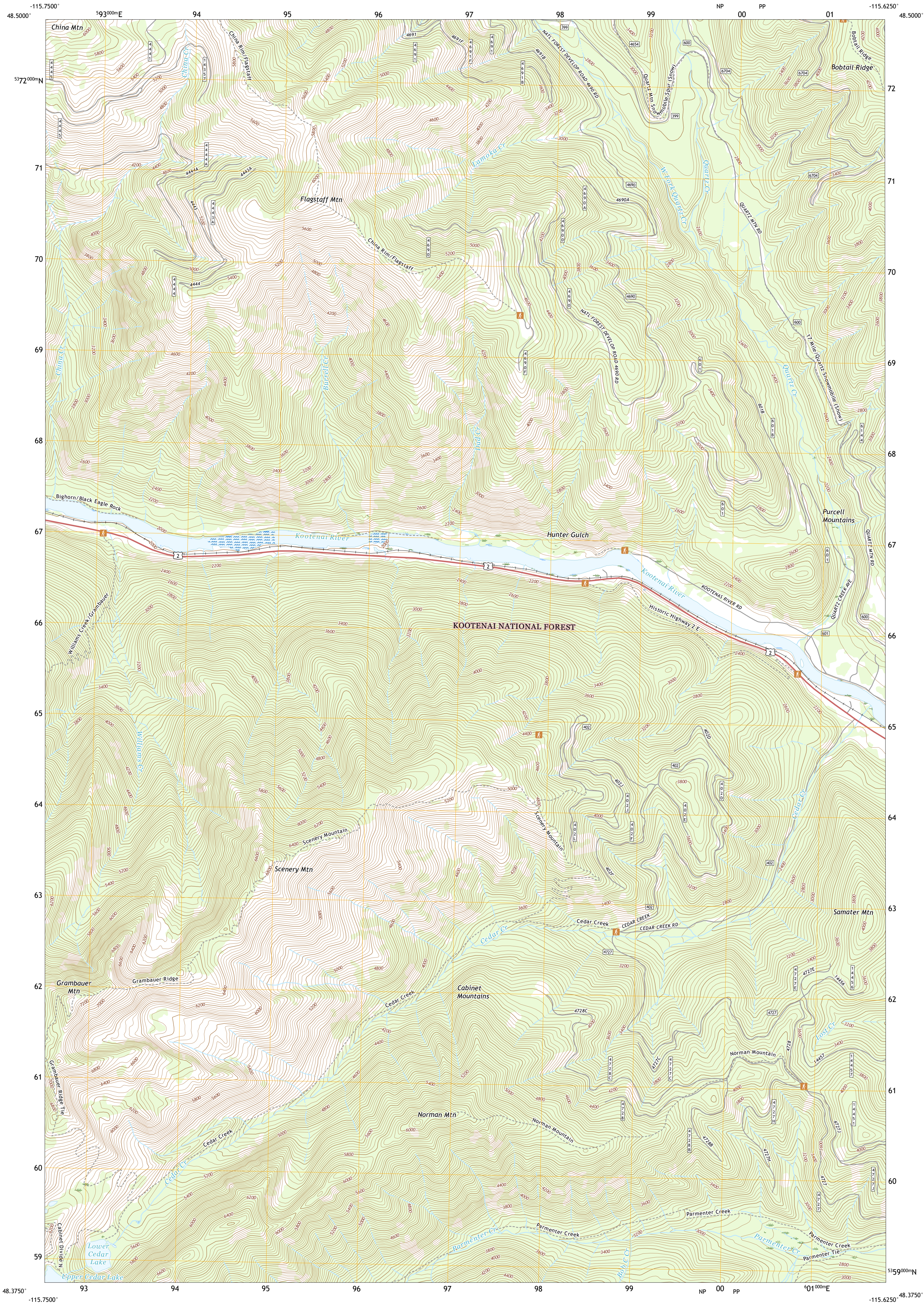




U.S. DEPARTMENT OF THE INTERIOR
U.S. GEOLOGICAL SURVEY



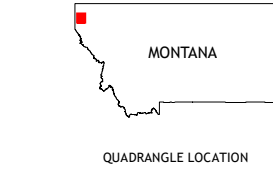
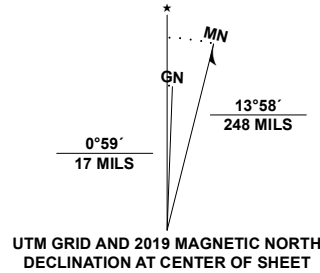
SCENERY MOUNTAIN QUADRANGLE
MONTANA - LINCOLN COUNTY
7.5-MINUTE SERIES



Produced by the United States Geological Survey

North American Datum of 1983 (NAD83)
World Geodetic System of 1984 (WGS84), Projection and
1 000-meter grid/Universal Transverse Mercator, Zone 11U
This map is not a legal document. Boundaries may be
generalized for this map scale. Private lands within government
reservations may not be shown. Obtain permission before
entering private lands.

Imagery.....NAIP, September 2015 - January 2016
Roads.....U.S. Census Bureau, Not Available
Roads within US Forest Service Lands.....FS Topo Data
with Limited Forest Service updates, 2013
Names.....GNIS, 1980 - 2020
Hydrography.....National Hydrography Dataset, 1899 - 2019
Contours.....National Elevation Dataset, 2003
Boundaries.....Multiple sources; see metadata file, 2019
Public Land Survey System.....BLM, 2018
Wetlands.....FWS National Wetlands Inventory, 2009



1	2	3
4	5	6
7	8	9

ADJOINING QUADRANGLES

1 Pulpit Mountain
2 Turner Mountain
3 Gold Hill
4 Kootenai Falls
5 Libby
6 Crowell Mountain
7 Treasure Mountain
8 Little Hoodoo Mountain

ROAD CLASSIFICATION	
Expressway	Local Connector
Secondary Hwy	Local Road
Ramp	4WD
Interstate Route	US Route
FS Primary Route	FS Passenger Route
	FS High Clearance Route

Check with local Forest Service unit
for current travel conditions and restrictions.

SCENERY MOUNTAIN, MT
2020

