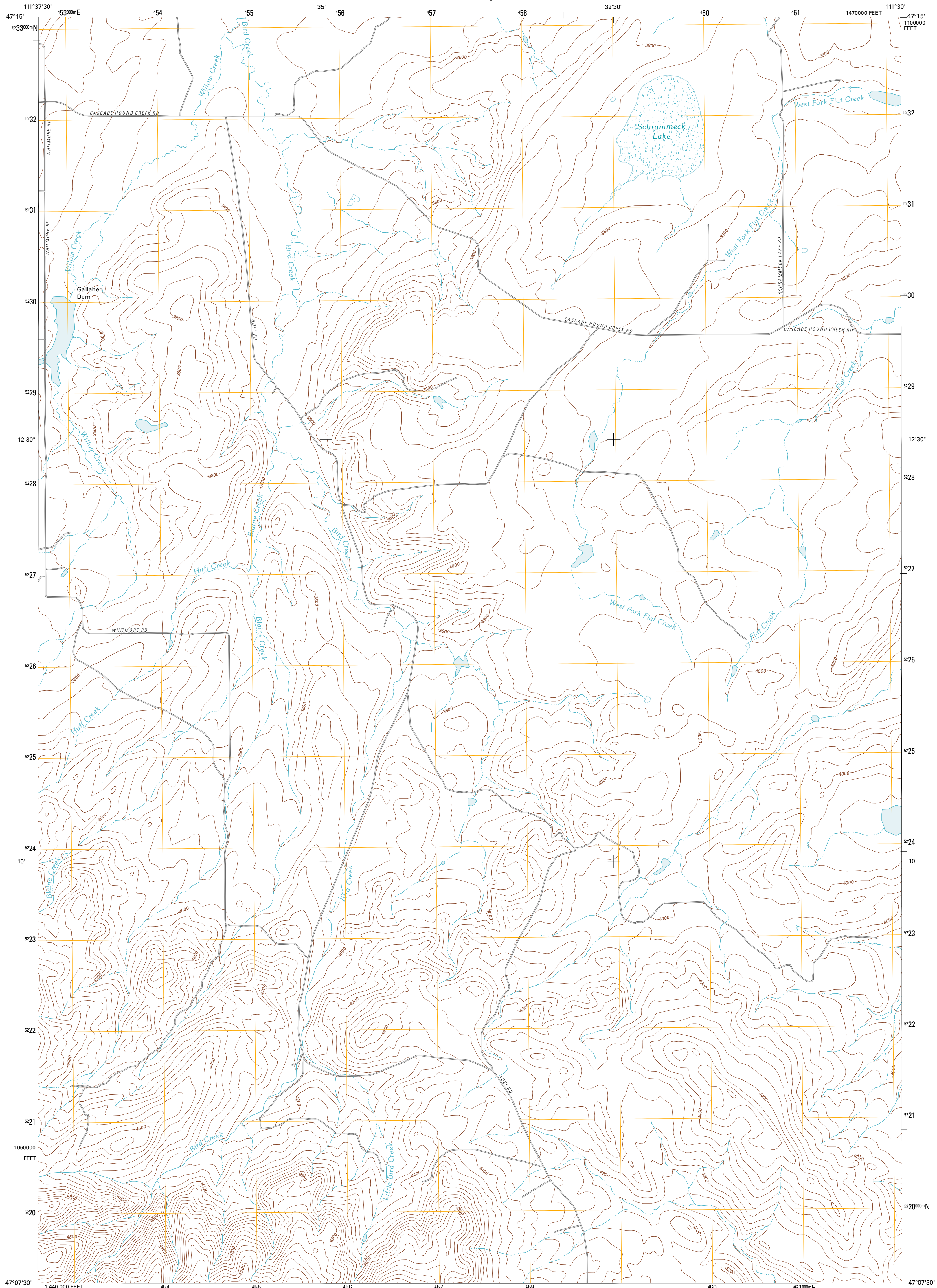




U.S. DEPARTMENT OF THE INTERIOR
U. S. GEOLOGICAL SURVEY



SCHRAMMECK LAKE QUADRANGLE
MONTANA-CASCADE CO.
7.5-MINUTE SERIES

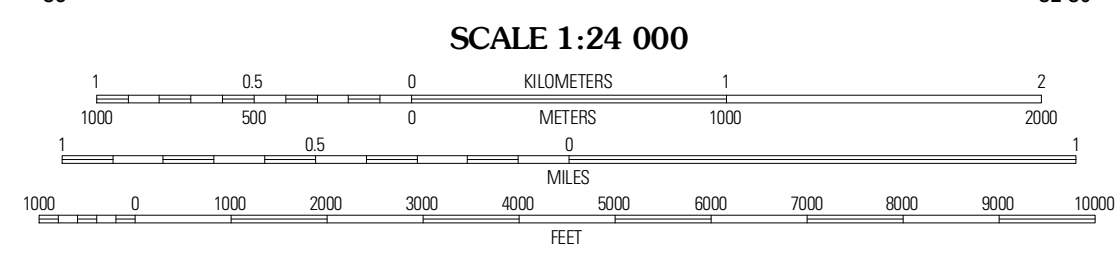


Produced by the United States Geological Survey
North American Datum of 1983 (NAD83)
World Geodetic System of 1984 (WGS84). Projection and
1 000-meter grid: Universal Transverse Mercator, Zone 12T
10 000-foot ticks: Montana Coordinate System of 1983

Imagery.....NAIP, July 2009
Roads.....©2006-2010 Tele Atlas
Names.....GNIS, 2010
Hydrography.....National Hydrography Dataset, 2009
Contours.....National Elevation Dataset, 2006
Boundaries.....Census, BWC, IBC, USGS, 1972 - 2010

UTM GRID AND 2011 MAGNETIC NORTH
DECLINATION AT CENTER OF SHEET

U.S. National Grid
100,000m Square ID
VT
Grid Zone Designation
12T



SCALE 1:24 000

CONTOUR INTERVAL 40 FEET
NORTH AMERICAN VERTICAL DATUM OF 1988

This map was produced to conform with version 0.5.10
of the USGS US Topo Product Standard.
A metadata file associated with this product is draft version 0.5.16



QUADRANGLE LOCATION

Cascade	Nelson Island	Truly
Rocky Reef	Schrammeck Lake	Spanish Condee School
Hound Creek Reservoir	Dana Ranch	Conway Ridge

ADJOINING 7.5 QUADRANGLES

ROAD CLASSIFICATION

Interstate Route

US Route

Ramp

State Route

Local Road

4WD

Interstate Route

US Route

State Route

SCHRAMMECK LAKE, MT
2011