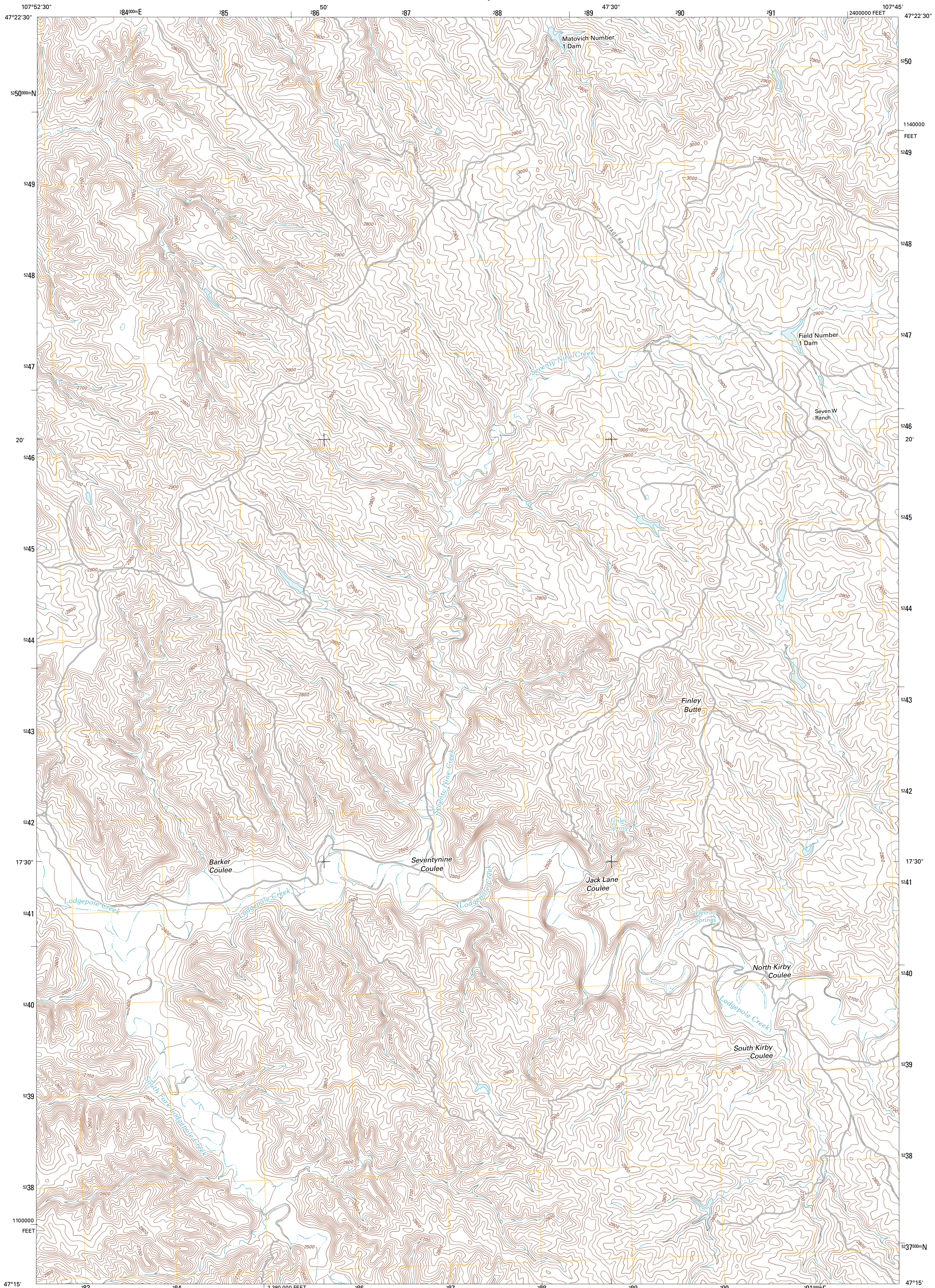




U.S. DEPARTMENT OF THE INTERIOR  
U. S. GEOLOGICAL SURVEY

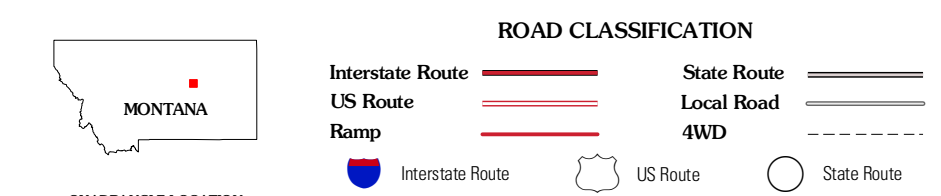
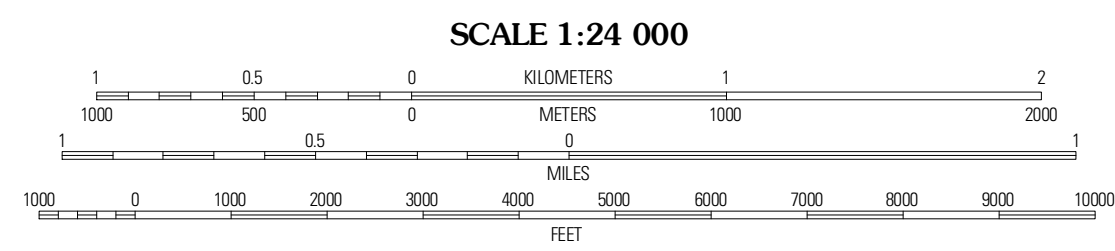
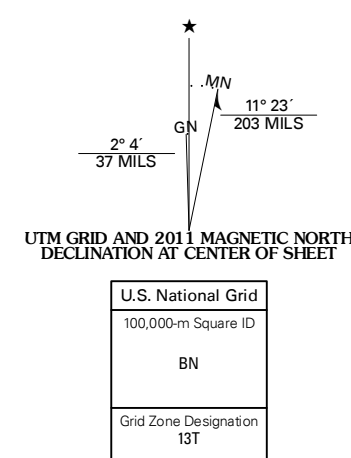


SEVENTYNINE COULEE QUADRANGLE  
MONTANA-GARFIELD CO.  
7.5-MINUTE SERIES



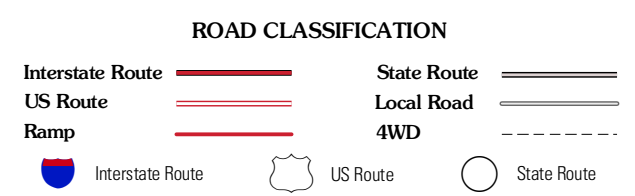
Produced by the United States Geological Survey  
North American Datum of 1983 (NAD83)  
World Geodetic System of 1984 (WGS84). Projection and  
1 000-meter grid: Universal Transverse Mercator, Zone 13T  
10 000-foot ticks: Montana Coordinate System of 1983

Imagery.....NAIP, July 2009  
Roads.....©2006-2010 Tele Atlas  
Names.....©2010  
Hydrography.....National Hydrography Dataset, 2009  
Contours.....National Elevation Dataset, 1999  
Boundaries.....Census, IBWC, IBC, USGS, 1972 - 2010



|                            |                            |                   |
|----------------------------|----------------------------|-------------------|
| Germaine<br>Coulee<br>West | Germaine<br>Coulee<br>East | Cap Rock<br>Butte |
| Nelson<br>Coulee           | Seventynine<br>Coulee      | Benzen            |
| Bridge<br>Coulee           | Lefig<br>Coulee            | Scarl<br>Coulee   |

ADJOINING 7.5 QUADRANGLES



CONTOUR INTERVAL 20 FEET  
NORTH AMERICAN VERTICAL DATUM OF 1988

This map was produced to conform with version 0.5.10  
of the USGS US Topo Product Standard.  
A metadata file associated with this product is draft version 0.5.16

SEVENTYNINE COULEE, MT  
2011