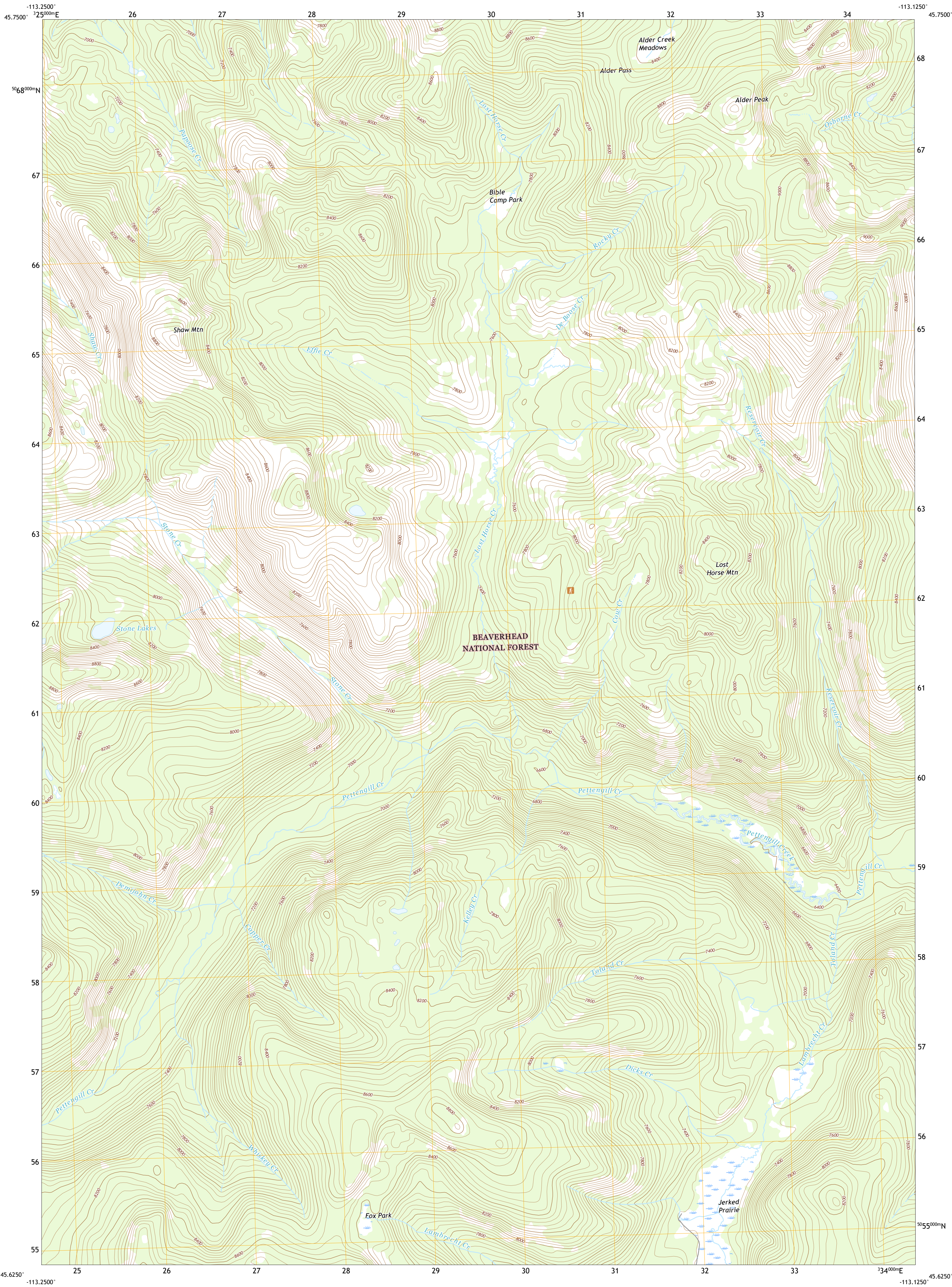




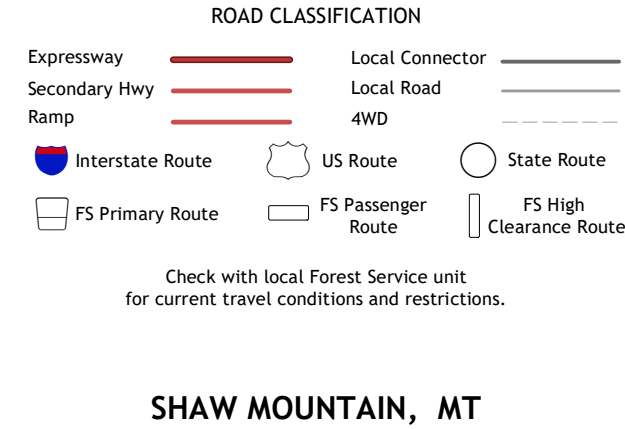
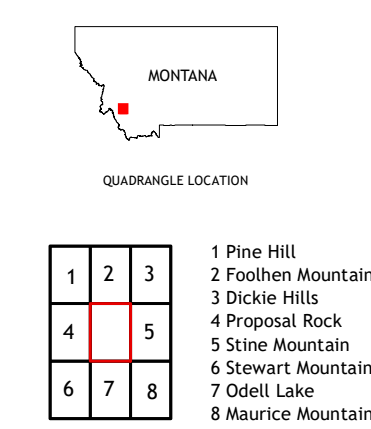
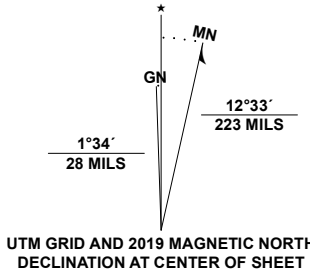
U.S. DEPARTMENT OF THE INTERIOR  
U.S. GEOLOGICAL SURVEY



SHAW MOUNTAIN QUADRANGLE  
MONTANA - BEAVERHEAD COUNTY  
7.5-MINUTE SERIES



Produced by the United States Geological Survey  
North American Datum of 1983 (NAD83)  
World Geodetic System of 1984 (WGS84). Projection and  
1 000-meter grid: Universal Transverse Mercator, Zone 12T  
This map is not a legal document. Boundaries may be  
generalized for this map scale. Private lands within government  
reservations may not be shown. Obtain permission before  
entering private lands.  
Imagery.....NAIP, October 2015 - January 2016  
Roads.....U.S. Census Bureau, Not Available  
Roads within US Forest Service Lands.....FS Topo Data  
with limited Forest Service updates, 2013  
Names.....National Hydrography Dataset, 2002 - 2019  
Contours.....National Elevation Dataset, 2005  
Boundaries.....Multiple sources: see metadata file 2018 - 2019  
Public Land Survey System.....BLM, 2018  
Wetlands.....FWS National Wetlands Inventory Not Available



SHAW MOUNTAIN, MT  
2020

