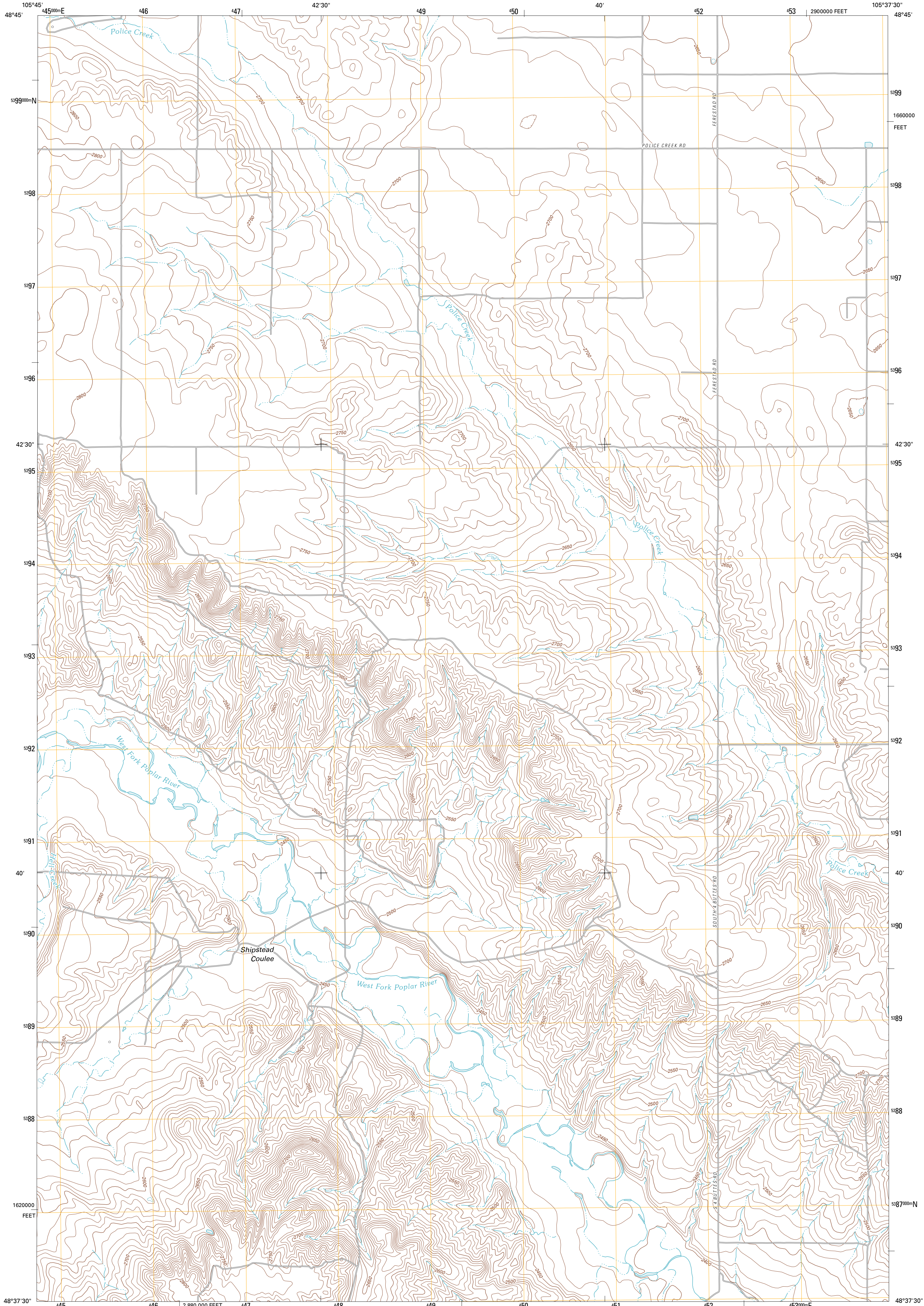




U.S. DEPARTMENT OF THE INTERIOR  
U. S. GEOLOGICAL SURVEY

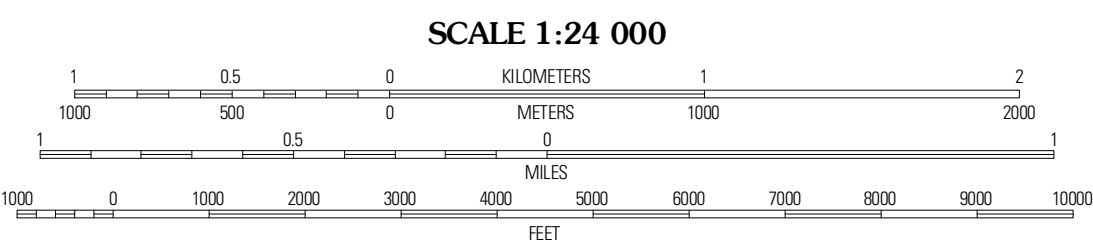
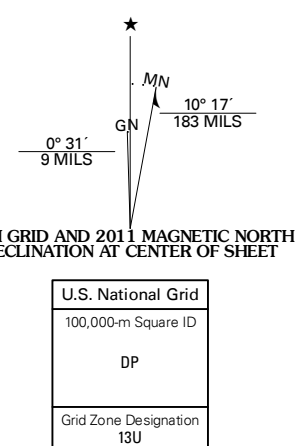


SHIPSTEAD COULEE QUADRANGLE  
MONTANA-DANIELS CO.  
7.5-MINUTE SERIES



Produced by the United States Geological Survey  
North American Datum of 1983 (NAD83)  
World Geodetic System of 1984 (WGS84). Projection and  
1 000 meter grid: Universal Transverse Mercator, Zone 13U  
10 000-foot ticks: Montana Coordinate System of 1983

Imagery.....NAIP, July 2009  
Roads.....©2006-2010 Tele Atlas  
Names.....GNIS, 2010  
Hydrography.....National Hydrography Dataset, 2009  
Contours.....National Elevation Dataset, 2008  
Boundaries.....Census, IBWC, IBC, USGS, 1972 - 2010



SCALE 1:24 000  
CONTOUR INTERVAL 10 FEET  
NORTH AMERICAN VERTICAL DATUM OF 1988  
This map was produced to conform with version 0.5.10  
of the USGS US Topo Product Standard.  
A metadata file associated with this product is draft version 0.5.16



ROAD CLASSIFICATION  
Interstate Route (thick red line)  
US Route (red line)  
Ramp (red line with blue triangle)  
State Route (thin grey line)  
Local Road (dashed grey line)  
4WD (dashed grey line with cross-ticks)  
Interstate Route (blue circle)  
US Route (white circle)  
State Route (grey circle)

QUADRANGLE LOCATION

Peerless	Killenbeck Reservoir	Four Buttes
West Fork NE	Shipstead Coulee	South of Four Buttes
Poplar Coulee	North of Volt	Jakes Coulee

ADJOINING 7.5 QUADRANGLES

SHIPSTEAD COULEE, MT  
2011