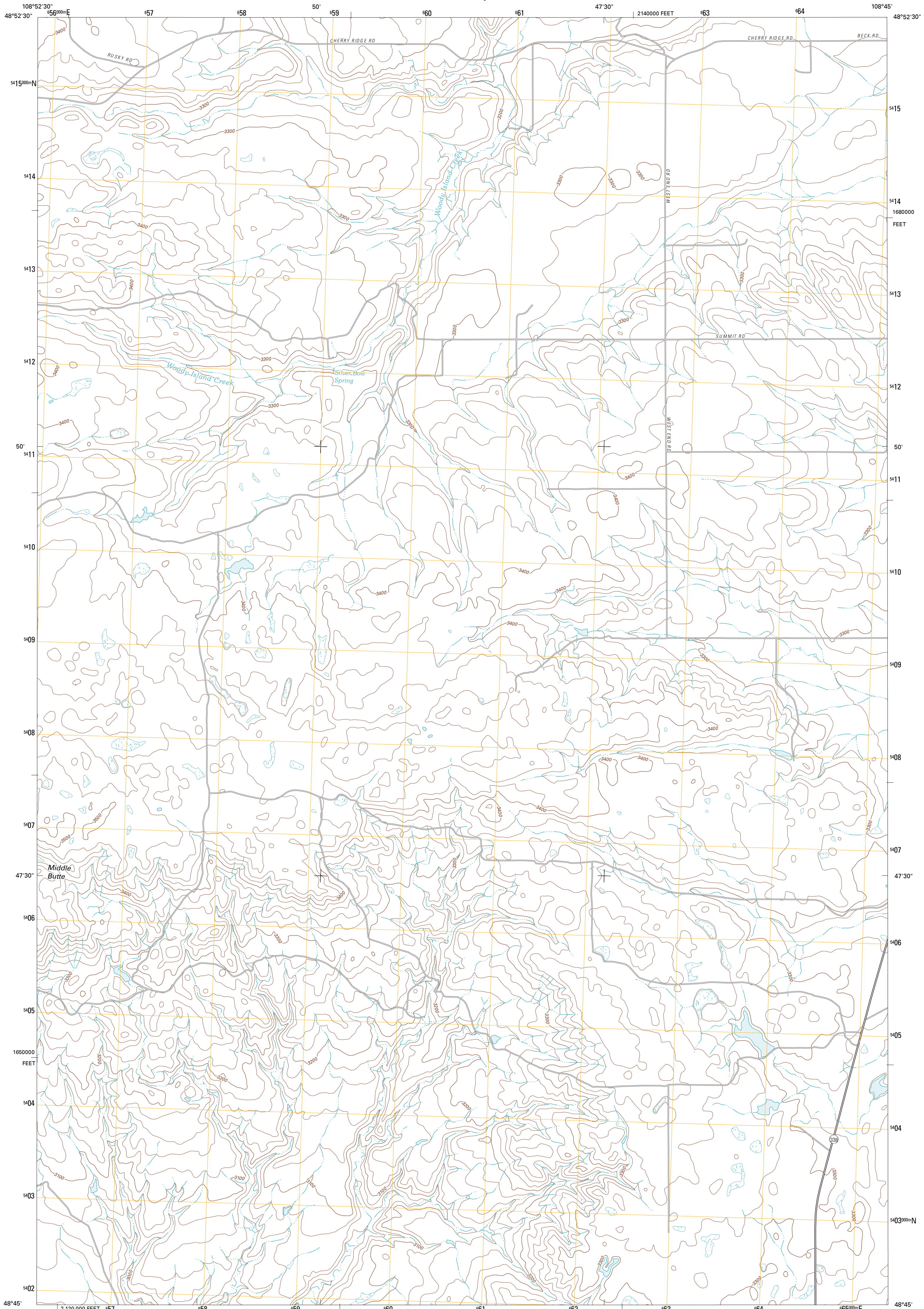




U.S. DEPARTMENT OF THE INTERIOR
U. S. GEOLOGICAL SURVEY



SILVER BOW SPRING QUADRANGLE
MONTANA-BLAINE CO.
7.5-MINUTE SERIES

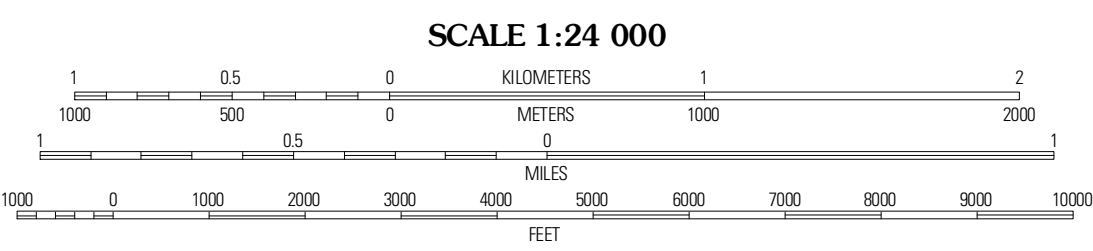


Produced by the United States Geological Survey
North American Datum of 1983 (NAD83)
World Geodetic System of 1984 (WGS84). Projection and
1 000-meter grid: Universal Transverse Mercator, Zone 12U
10 000-foot ticks: Montana Coordinate System of 1983

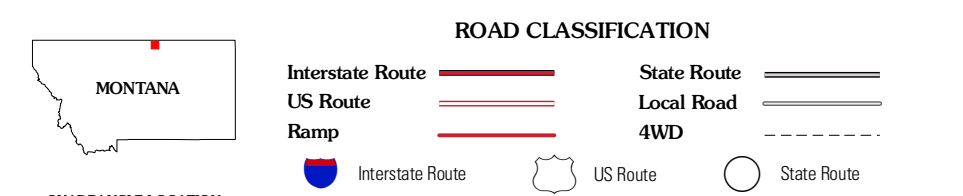
Imagery.....NAP, July 2009
Roads.....©2006-2010 Tele Atlas
Names.....National Hydrography Dataset, 2010
Hydrography.....National Hydrography Dataset, 2009
Contours.....National Elevation Dataset, 2005
Boundaries.....Census, IBWC, IBC, USGS, 1972 - 2010

UTM GRID AND 2011 MAGNETIC NORTH
DECLINATION AT CENTER OF SHEET

U.S. National Grid	12U
100,000-m Square ID	XV
Grid Zone Designation	12U



SCALE 1:24 000
CONTOUR INTERVAL 20 FEET
NORTH AMERICAN VERTICAL DATUM OF 1988
This map was produced to conform with version 0.5.10
of the USGS US Topo Product Standard.
A metadata file associated with this product is draft version 0.5.16



ADJOINING 7.5 QUADRANGLES

India Cooke	Audrey Dam	Hogland NW
Silver Bow Lake	Silver Bow Spring	Hogland
Harlem NW	East Butte	Wayne Creek NW

SILVER BOW SPRING, MT
2011