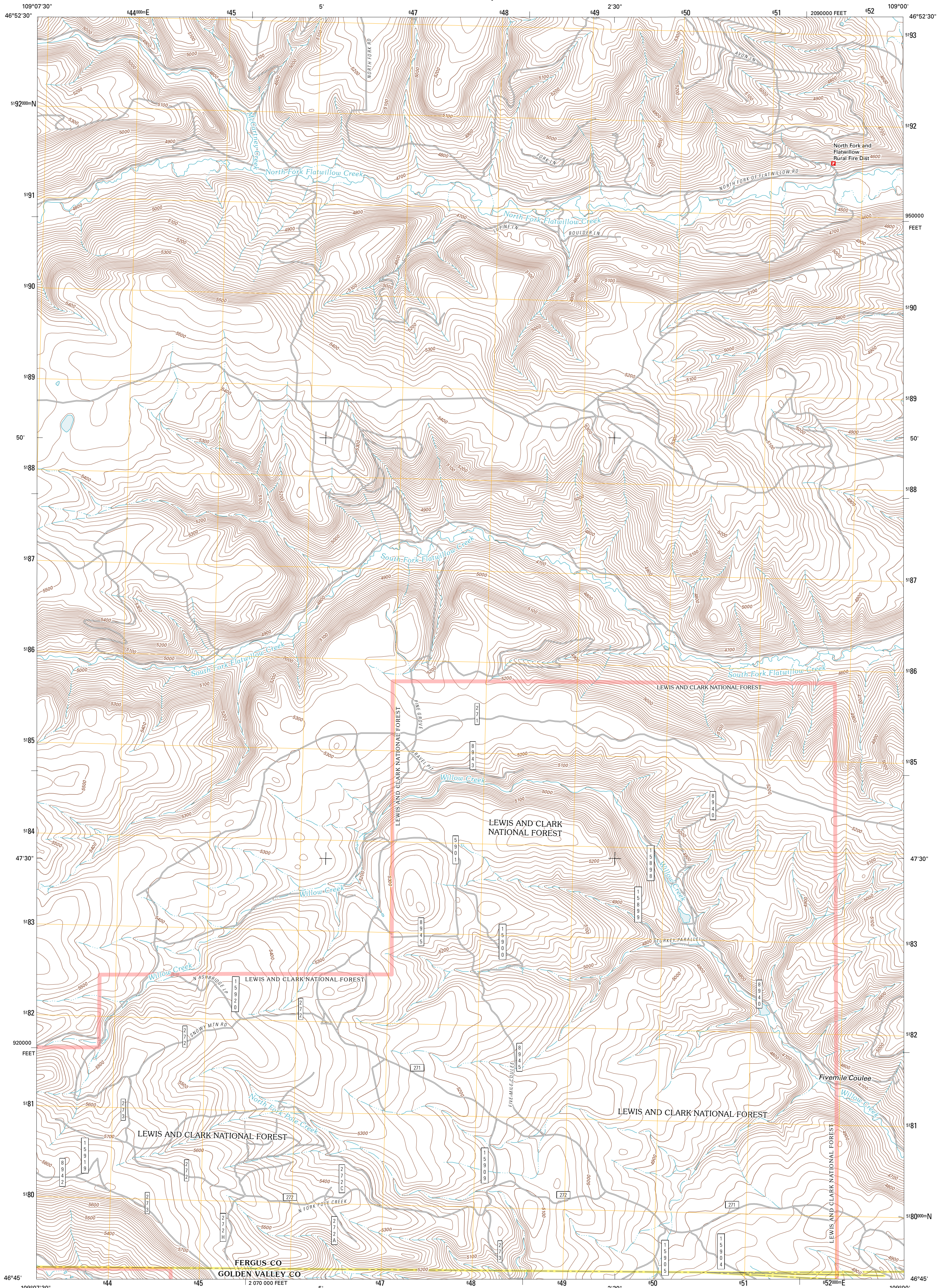




U.S. DEPARTMENT OF THE INTERIOR
U. S. GEOLOGICAL SURVEY

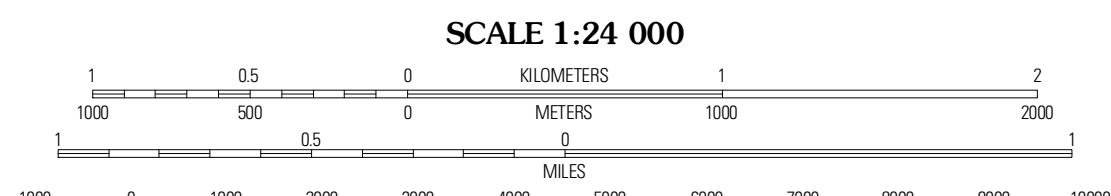
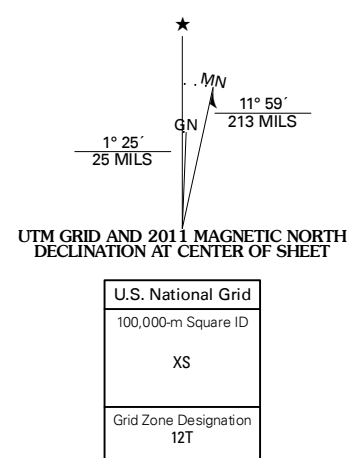


SOUTH BENCH QUADRANGLE
MONTANA
7.5-MINUTE SERIES



Produced by the United States Geological Survey
North American Datum of 1983 (NAD83)
World Geodetic System of 1984 (WGS84). Projection and
1 000-meter grid: Universal Transverse Mercator, Zone 12T
10 000-foot ticks: Montana Coordinate System of 1983

Imagery: NAD, June 2009
Roads: 02/06/2010 Tele Atlas
Roads within US Forest Service Lands: FSTopo Data
with limited Forest Service updates, 2009
Names: GNS, 2010
Hydrography: National Hydrography Dataset, 2009
Contours: National Elevation Dataset, 2006
Boundaries: Census, IBWC, IBC, USGS, 1972 - 2010



SCALE 1:24 000

CONTOUR INTERVAL 20 FEET
NORTH AMERICAN VERTICAL DATUM OF 1988

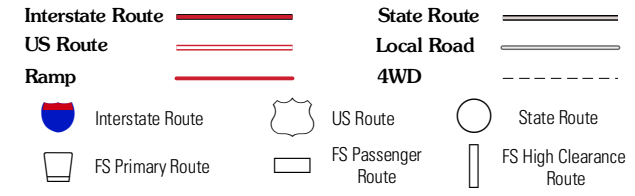
This map was produced to conform with version 0.5.10
of the USGS US Topo Product Standard.
A metadata file associated with this product is draft version 0.5.16



QUADRANGLE LOCATION

Laco Ridge	Forestgrove	Becket
Alaska Bench	South Bench	Bald Butte
Patterson Canyon	Sahara Hill	Devils Hole Lake

ROAD CLASSIFICATION



Check with local Forest Service unit
for current travel conditions and restrictions.

SOUTH BENCH, MT
2011

ADJOINING 7.5 QUADRANGLES