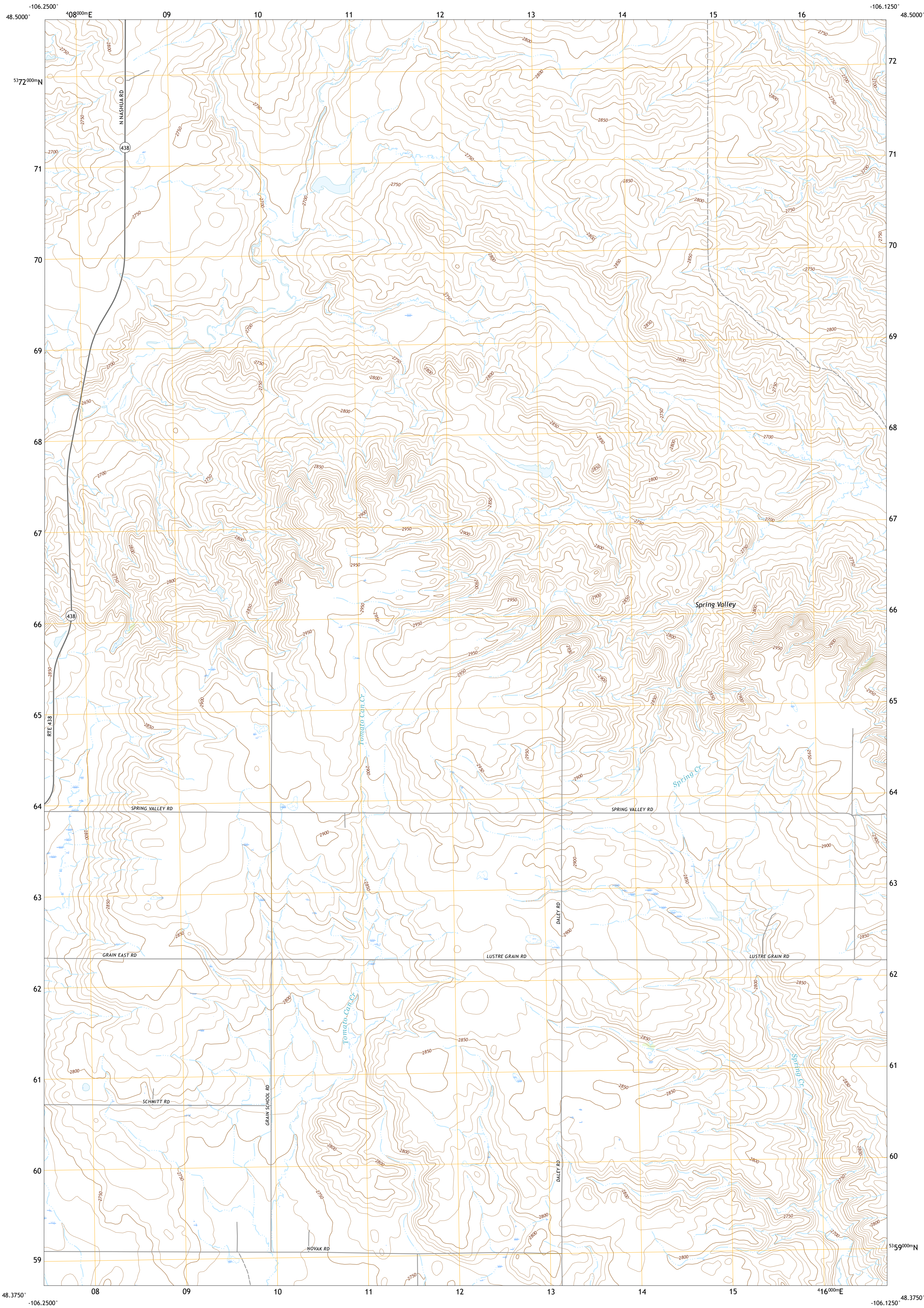




U.S. DEPARTMENT OF THE INTERIOR
U.S. GEOLOGICAL SURVEY



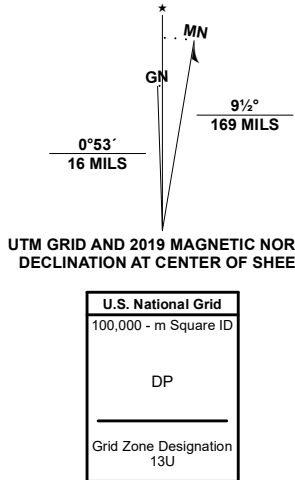
SPRING VALLEY WEST QUADRANGLE
MONTANA - VALLEY COUNTY
7.5-MINUTE SERIES



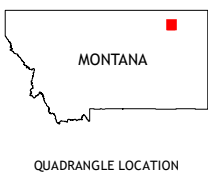
Produced by the United States Geological Survey

North American Datum of 1983 (NAD83)
World Geodetic System of 1984 (WGS84). Projection and
1 000-meter grid; Universal Transverse Mercator, Zone 13U
This map is not a legal document. Boundaries may be
generalized for this map scale. Private lands within government
reservations may not be shown. Obtain permission before
entering private lands.

Imagery.....NAIP, October 2015 - January 2016
Roads.....U.S. Census Bureau, 2016
Names.....GNIS, 1994
Hydrography.....National Hydrography Dataset, 1989 - 2019
Contours.....National Elevation Dataset, 1999
Boundaries.....Multiple sources; see metadata file 2018 - 2019
Public Land Survey System.....BLM, 2018
Wetlands.....FWS National Wetlands Inventory 1984 - 1985



CONTOUR INTERVAL 10 FEET
NORTH AMERICAN VERTICAL DATUM OF 1988
This map was produced to conform with the
National Geospatial Program US Topo Product Standard, 2011.
A metadata file associated with this product is draft version 0.6.18



1	2	3
4	5	6
7	8	9

1 Baylor SE
2 Larslan
3 Blink Springs
4 Bullhead Reservoir
5 Spring Valley East
6 Sargent Creek
7 Spring Creek SW
8 Hauck Coulee

ROAD CLASSIFICATION	
Expressway	Local Connector
Secondary Hwy	Local Road
Ramp	4WD
Interstate Route	US Route
	State Route

SPRING VALLEY WEST, MT
2020

