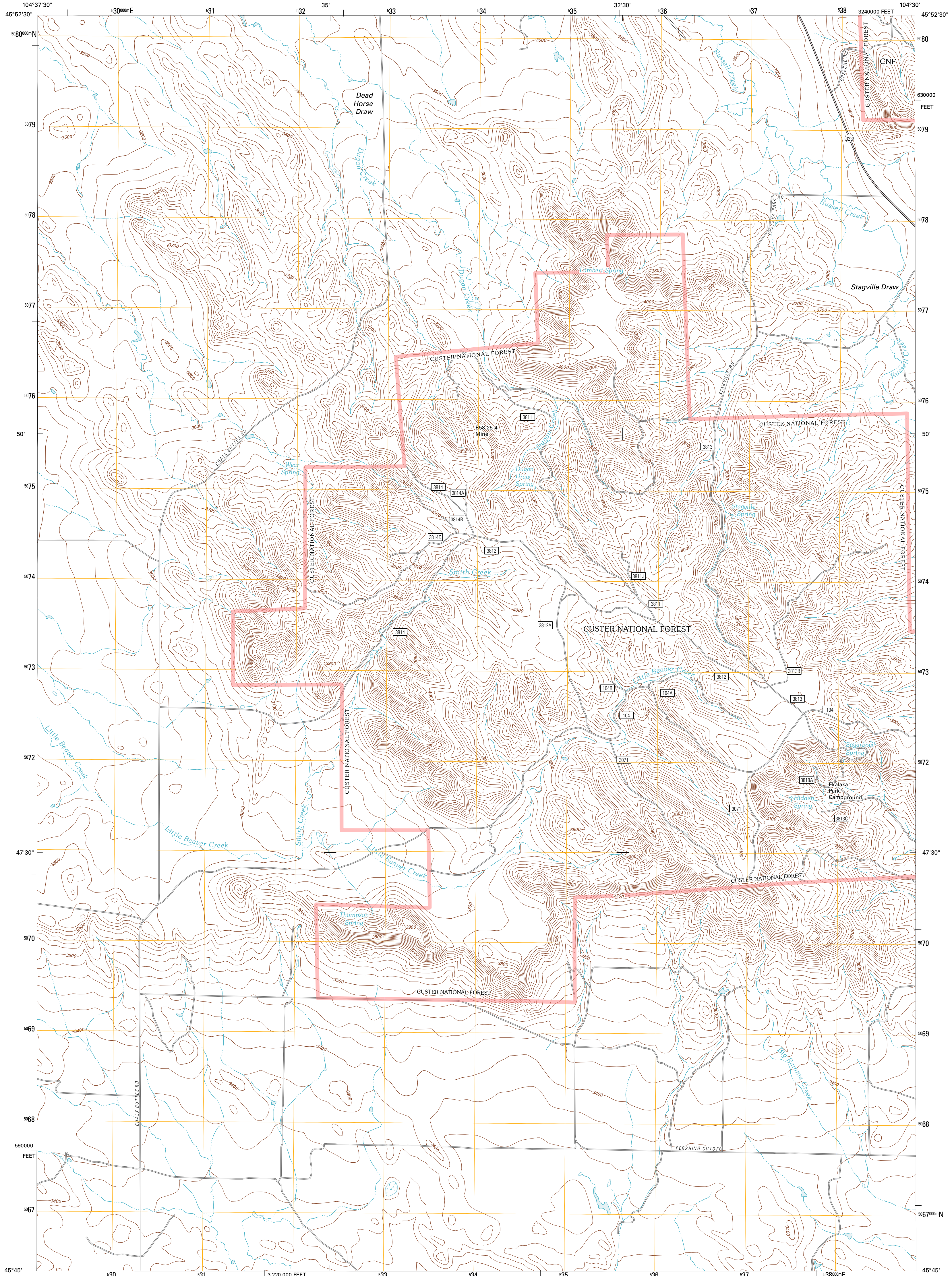




U.S. DEPARTMENT OF THE INTERIOR
U. S. GEOLOGICAL SURVEY

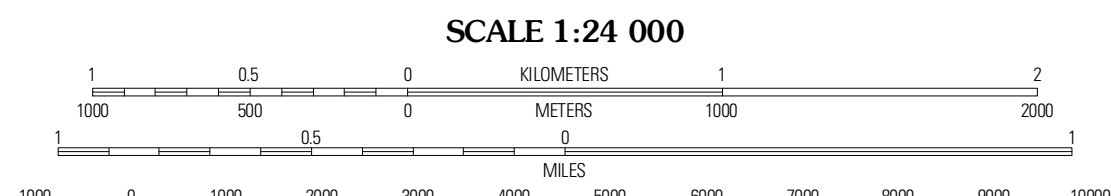
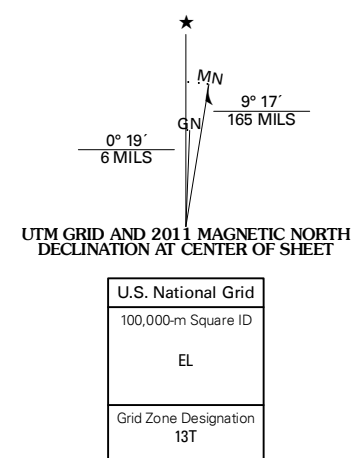


STAGVILLE DRAW QUADRANGLE
MONTANA-CARTER CO.
7.5-MINUTE SERIES

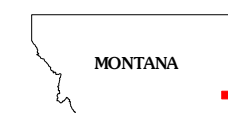


Produced by the United States Geological Survey
North American Datum of 1983 (NAD83)
World Geodetic System of 1984 (WGS84). Projection and
1 000-meter grid: Universal Transverse Mercator, Zone 13T
10 000-foot ticks: Montana Coordinate System of 1983

Imagery: NMAP, July 2009
Roads: ©2006-2010 Tele Atlas
Roads within US Forest Service Lands: FSTopo Data
with limited Forest Service updates, 2009
Names: GNIS, 2010
Hydrography: National Hydrography Dataset, 2009
Contours: National Elevation Dataset, 2009
Boundaries: Census, IBWC, IBC, USGS, 1972 - 2010



CONTOUR INTERVAL 40 FEET
NORTH AMERICAN VERTICAL DATUM OF 1988
This map was produced to conform with version 0.5.10
of the USGS US Topo Product Standard.
A metadata file associated with this product is draft version 0.5.16



QUADRANGLE LOCATION

Beaver Flats North	Ekakika	Terrill Creek
Beaver Flats South	Stagville Draw	Camp Needmore
Chalk Buttes	Dead Boy Divide	Taylor Hills

ADJOINING 7.5' QUADRANGLES

ROAD CLASSIFICATION

	Interstate Route		State Road
	US Route		Local Road
	Ramp		4WD
	Interstate Route		State Route
	US Route		FS Passenger Route
	FS Primary Route		FS High Clearance Route

Check with local Forest Service unit for current travel conditions and restrictions.

STAGVILLE DRAW, MT
2011