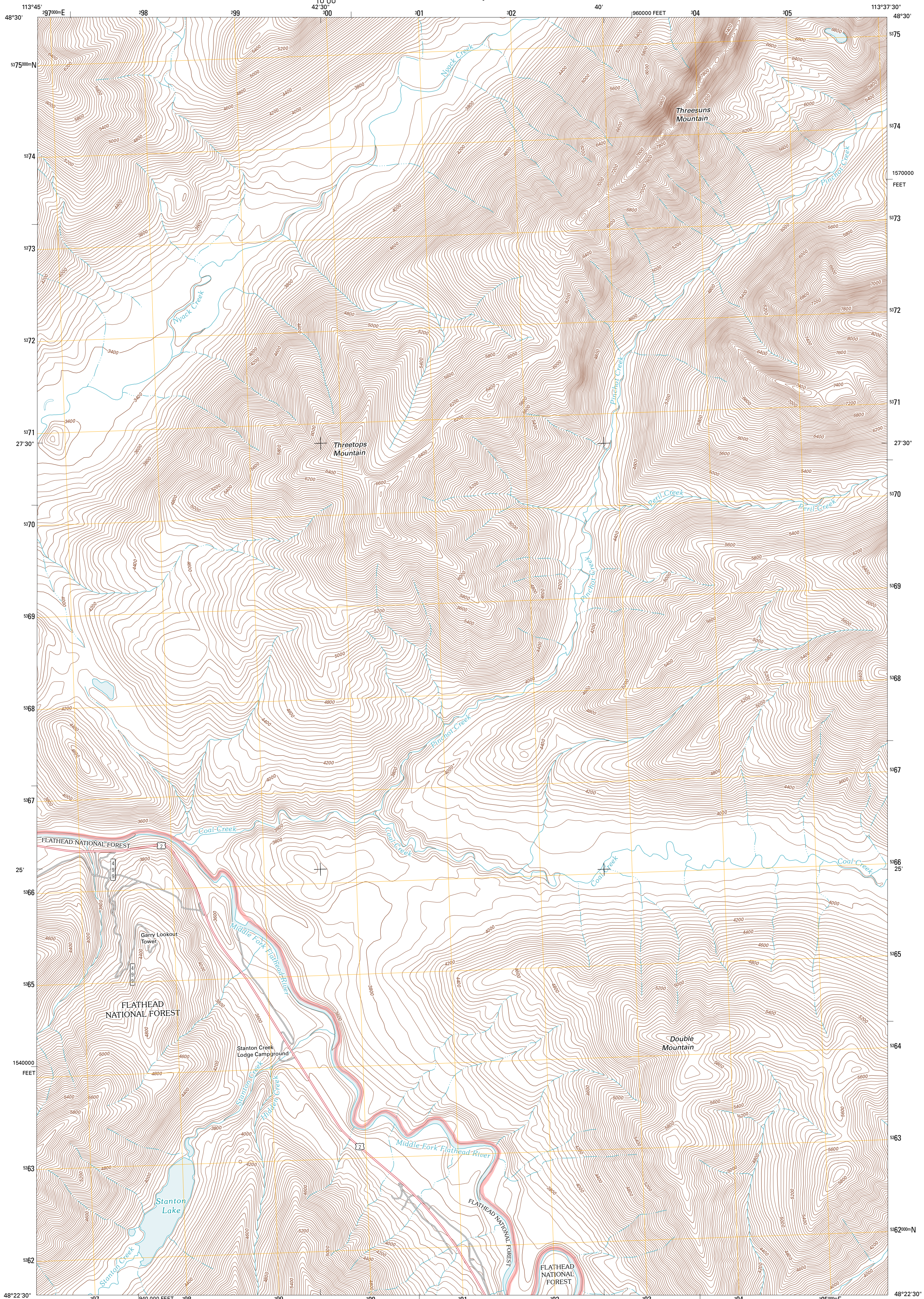




U.S. DEPARTMENT OF THE INTERIOR  
U. S. GEOLOGICAL SURVEY

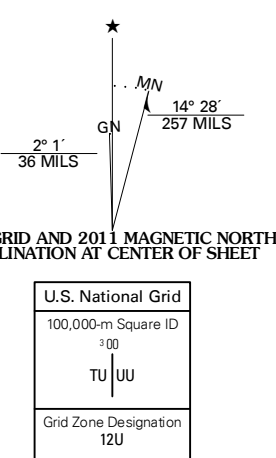


STANTON LAKE QUADRANGLE  
MONTANA-FLATHEAD CO.  
7.5-MINUTE SERIES

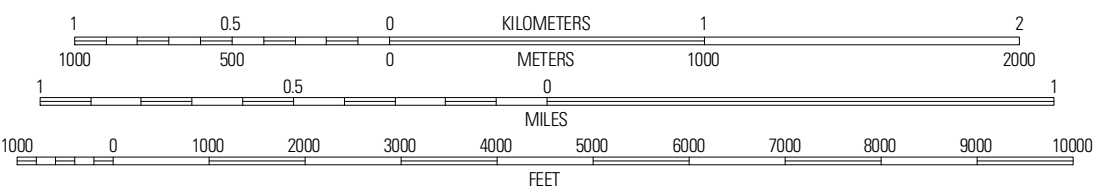


Produced by the United States Geological Survey  
North American Datum of 1983 (NAD83)  
World Geodetic System of 1984 (WGS84). Projection and  
1 000-meter grid: Universal Transverse Mercator, Zone 12U  
10 000-foot ticks: Montana Coordinate System of 1983

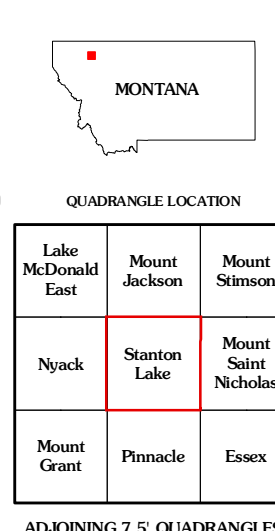
Imagery.....NAIP, July 2009  
Roads.....©2006-2010 Tele Atlas  
Roads within US Forest Service Lands.....FS Topo Data  
with limited Forest Service updates, 2009  
Names.....©2006-2010 Tele Atlas  
Hydrography.....National Hydrography Dataset, 2009  
Contours.....National Elevation Dataset, 2001  
Boundaries.....Census, IBWC, IBC, USGS, 1972 - 2010



SCALE 1:24 000



CONTOUR INTERVAL 40 FEET  
NORTH AMERICAN VERTICAL DATUM OF 1988  
This map was produced to conform with version 0.5.10  
of the USGS US Topo Product Standard.  
A metadata file associated with this product is draft version 0.5.16



ROAD CLASSIFICATION

Interstate Route	State Route
US Route	Local Road
Ramp	4WD
FS Primary Route	US Route
	FS Passenger Route
	FS High Clearance Route

Check with local Forest Service unit for current travel conditions and restrictions.

STANTON LAKE, MT  
2011

ADJOINING 7.5' QUADRANGLES