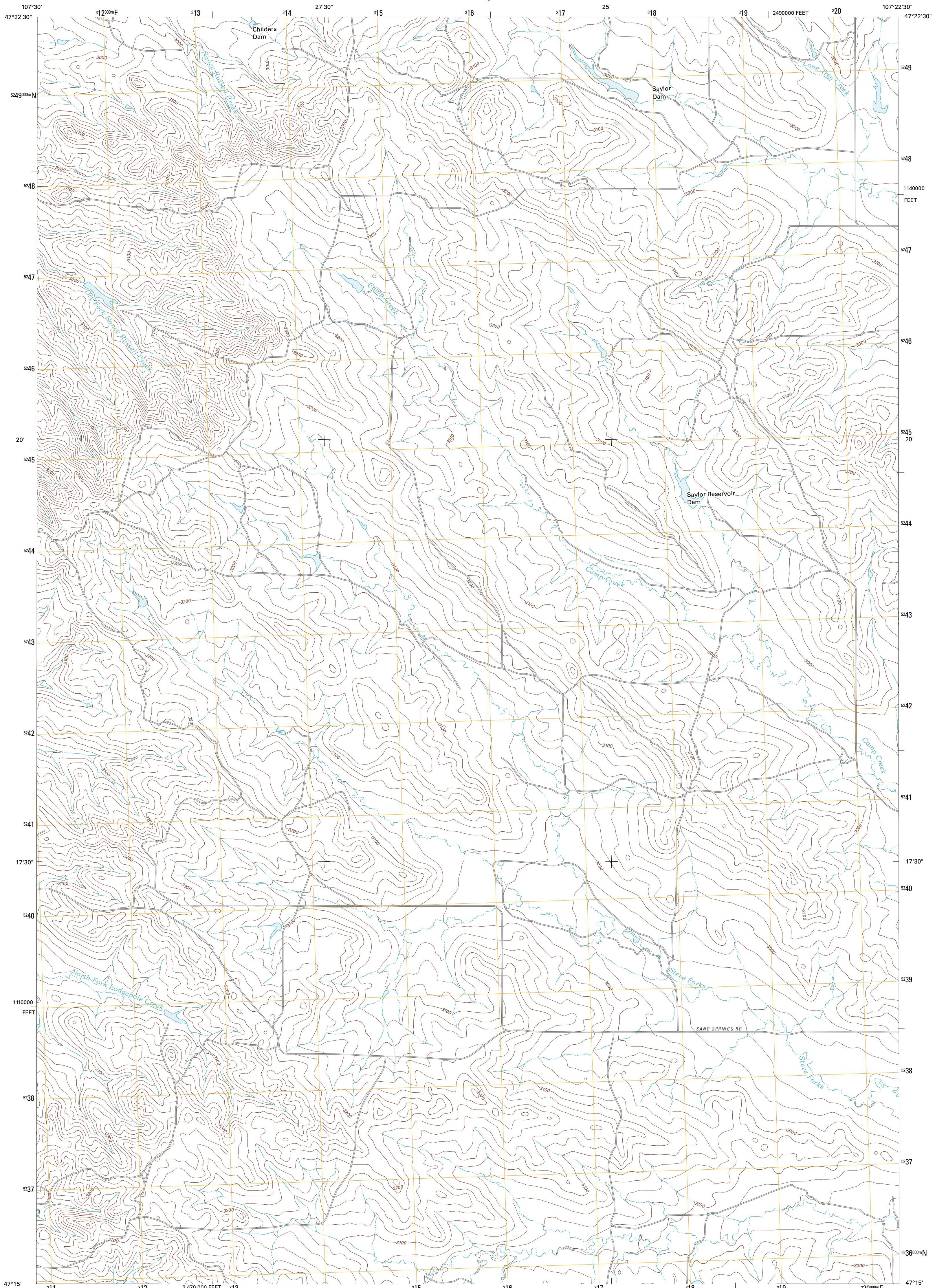




U.S. DEPARTMENT OF THE INTERIOR  
U. S. GEOLOGICAL SURVEY

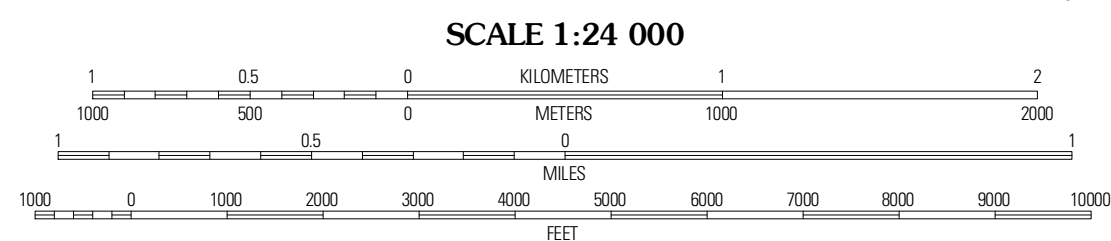
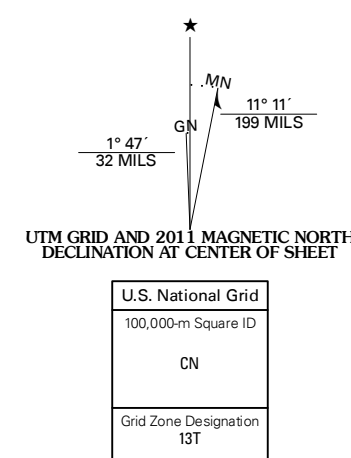


STEVE FORKS SW QUADRANGLE  
MONTANA-GARFIELD CO.  
7.5-MINUTE SERIES



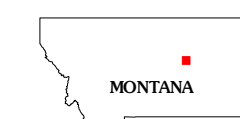
Produced by the United States Geological Survey  
North American Datum of 1983 (NAD83)  
World Geodetic System of 1984 (WGS84). Projection and  
1 000-meter grid: Universal Transverse Mercator, Zone 13T  
10 000-foot ticks: Montana Coordinate System of 1983

Imagery.....NAIP, July 2009  
Roads.....©2006-2010 Tele Atlas  
Names.....GNIS, 2010  
Hydrography.....National Hydrography Dataset, 2009  
Contours.....National Elevation Dataset, 1999  
Boundaries.....Census, IBWC, IBC, USGS, 1972 - 2010



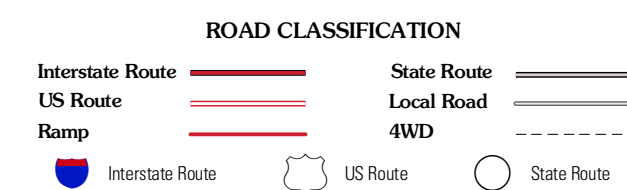
CONTOUR INTERVAL 20 FEET  
NORTH AMERICAN VERTICAL DATUM OF 1988

This map was produced to conform with version 0.5.10  
of the USGS US Topo Product Standard.  
A metadata file associated with this product is draft version 0.5.16



QUADRANGLE LOCATION

|                           |                     |                |
|---------------------------|---------------------|----------------|
| Spring<br>Creek<br>School | Blackfoot<br>School | Brusett        |
| Hay<br>Codee              | Steve<br>Forks SW   | Steve<br>Forks |
| Coffin<br>Butte           | Twin<br>Buttes      | Edwards        |



STEVE FORKS SW, MT  
2011

ADJOINING 7.5 QUADRANGLES