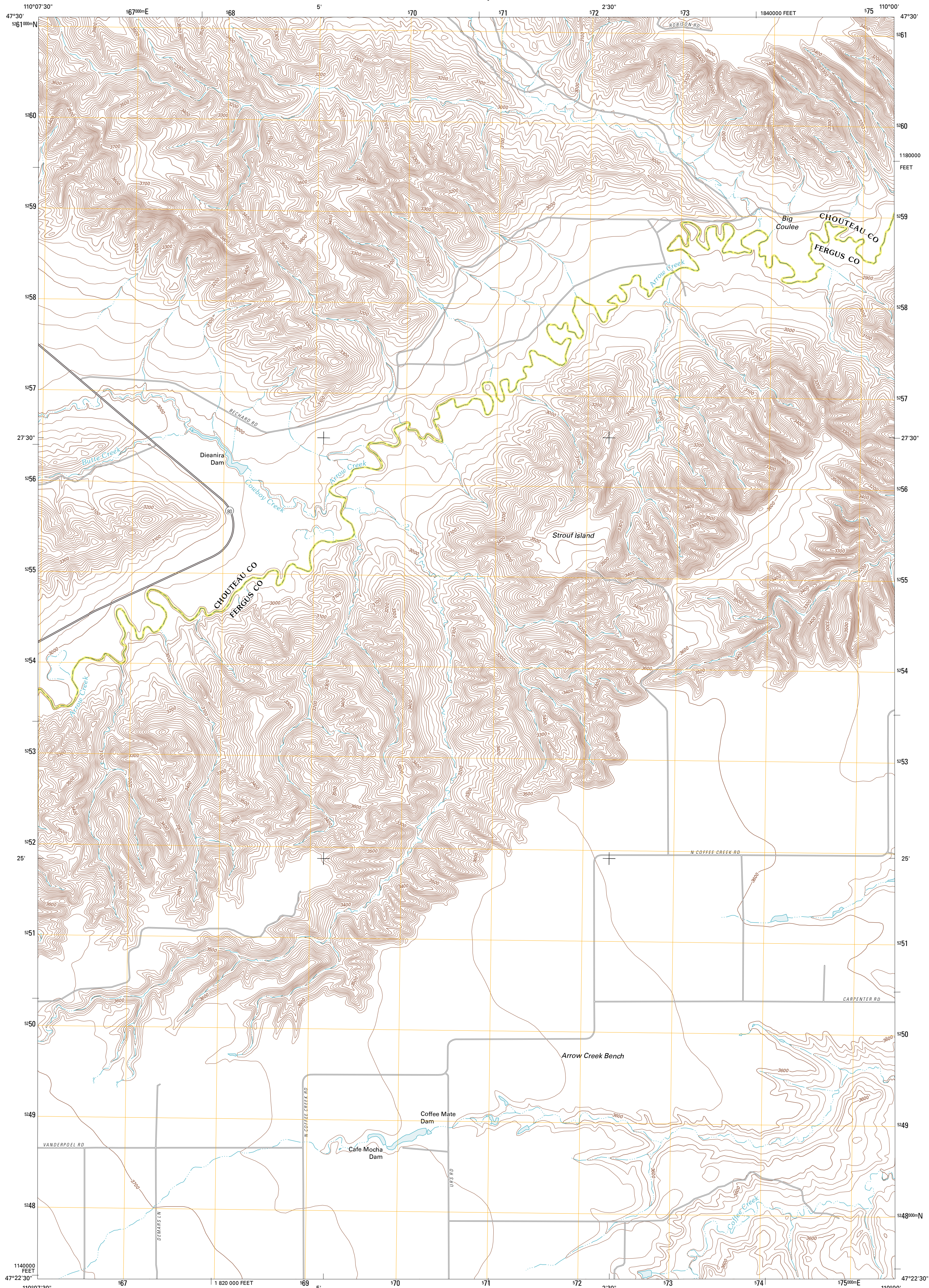




U.S. DEPARTMENT OF THE INTERIOR
U. S. GEOLOGICAL SURVEY



STROUF ISLAND QUADRANGLE
MONTANA
7.5-MINUTE SERIES

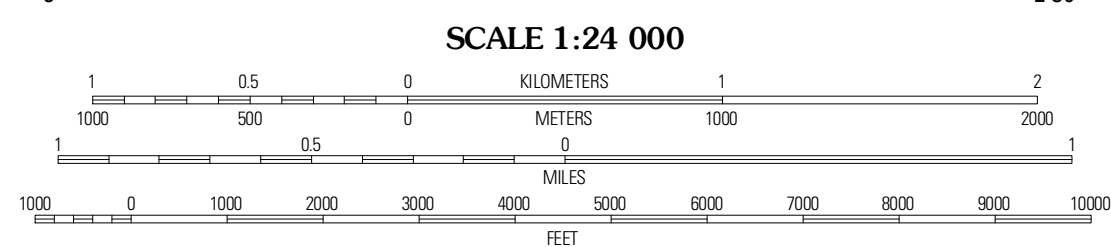


Produced by the United States Geological Survey
North American Datum of 1983 (NAD83)
World Geodetic System of 1984 (WGS84). Projection and
1 000-meter grid: Universal Transverse Mercator, Zone 12T
10 000-foot ticks: Montana Coordinate System of 1983

Imagery.....N.A.I.P., June 2009
Roads.....©2006-2010 Tele Atlas
Names.....©2006-2010 Tele Atlas
Hydrography.....National Hydrography Dataset, 2009
Contours.....National Elevation Dataset, 2006
Boundaries.....Census, IBWC, IBC, USGS, 1972 - 2010

UTM GRID AND 2011 MAGNETIC NORTH
DECLINATION AT CENTER OF SHEET

U.S. National Grid
100,000m Square ID
WT
Grid Zone Designation
12T



QUADRANGLE LOCATION

Square Butte	Square Butte SE	Steele Lake Codese
Powall	Strouf Island	Possum Run Creek
Arrow Creek	Coffee Creek	Denton

ROAD CLASSIFICATION

Interstate Route
US Route
Ramp

State Route
Local Road
4WD

CONTOUR INTERVAL 20 FEET
NORTH AMERICAN VERTICAL DATUM OF 1988

This map was produced to conform with version 0.5.10
of the USGS US Topo Product Standard.
A metadata file associated with this product is draft version 0.5.16

STROUF ISLAND, MT
2011

ADJOINING 7.5 QUADRANGLES