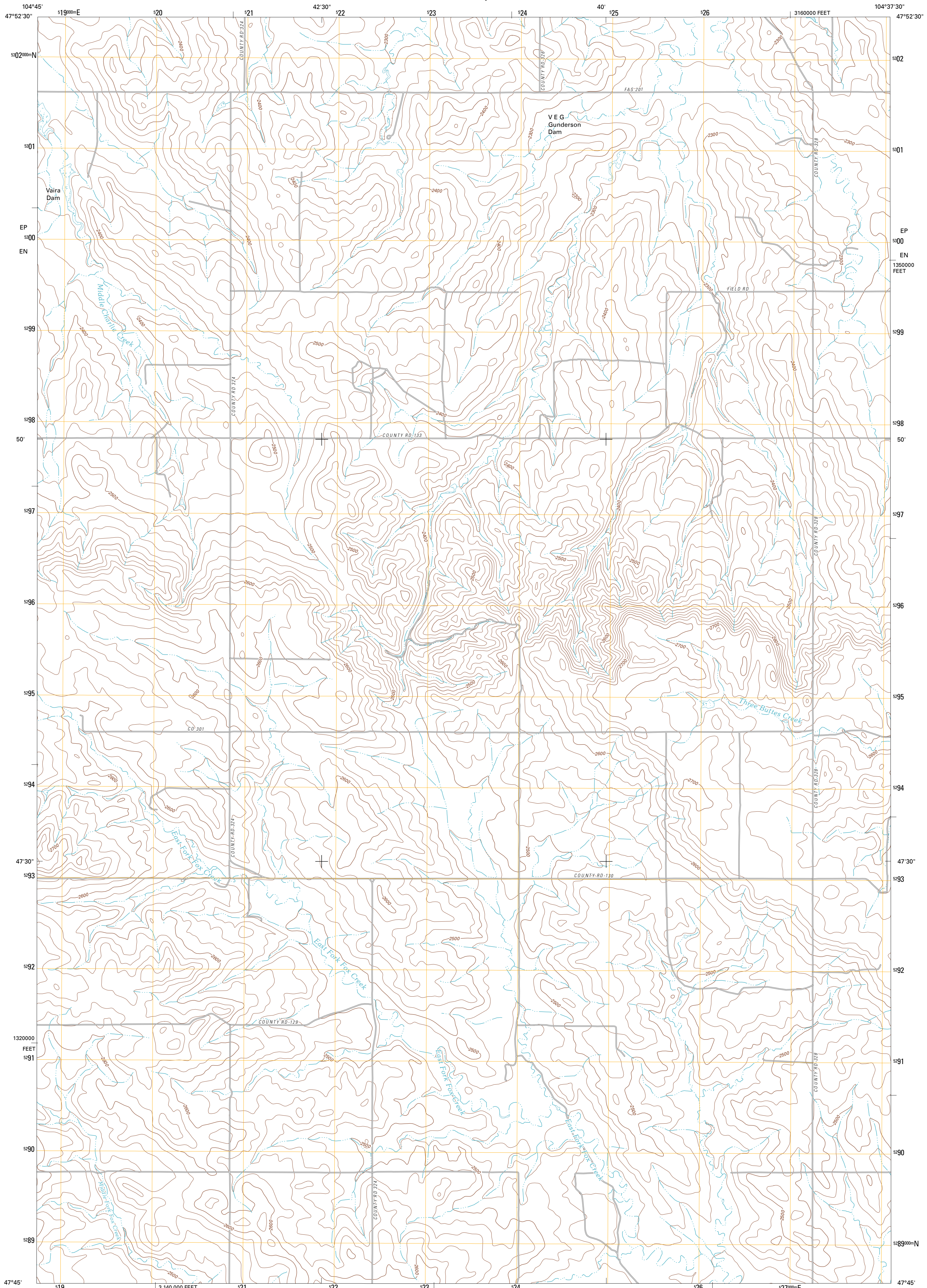




U.S. DEPARTMENT OF THE INTERIOR
U. S. GEOLOGICAL SURVEY



THREE BUTTES CREEK WEST QUADRANGLE
MONTANA-RICHLAND CO.
7.5-MINUTE SERIES

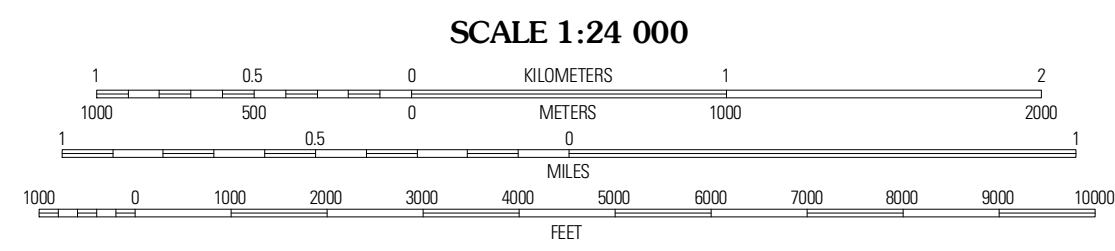


Produced by the United States Geological Survey
North American Datum of 1983 (NAD83)
World Geodetic System of 1984 (WGS84). Projection and
1 000-meter grid. Universal Transverse Mercator. Zone 13T
10 000-foot ticks. Montana Coordinate System of 1983

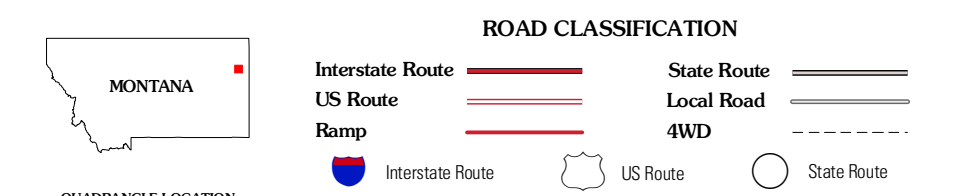
Imagery.....NAP, July 2009
Roads.....©2006-2010 Tele Atlas
Names.....GNIS, 2010
Hydrography.....National Hydrography Dataset, 2009
Contours.....National Elevation Dataset, 2009
Boundaries.....Census, IBWC, IBC, USGS, 1972 - 2010

UTM GRID AND 2011 MAGNETIC NORTH
DECLINATION AT CENTER OF SHEET

U.S. National Grid	13T
100,000m Square ID	EP
Grid Zone Designation	13T

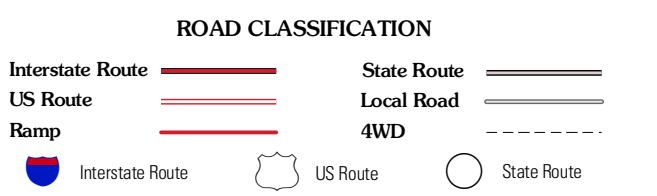


SCALE 1:24 000
CONTOUR INTERVAL 20 FEET
NORTH AMERICAN VERTICAL DATUM OF 1988
This map was produced to conform with version 0.5.10
of the USGS US Topo Product Standard.
A metadata file associated with this product is draft version 0.5.16



QUADRANGLE LOCATION

Elmsdale	Elm Coulee	Andes
Carda Coulee	Three Buttes Creek West	Three Buttes Creek East
Emd	Fox Lake	Lambert



THREE BUTTES CREEK WEST, MT
2011

ADJOINING 7.5 QUADRANGLES