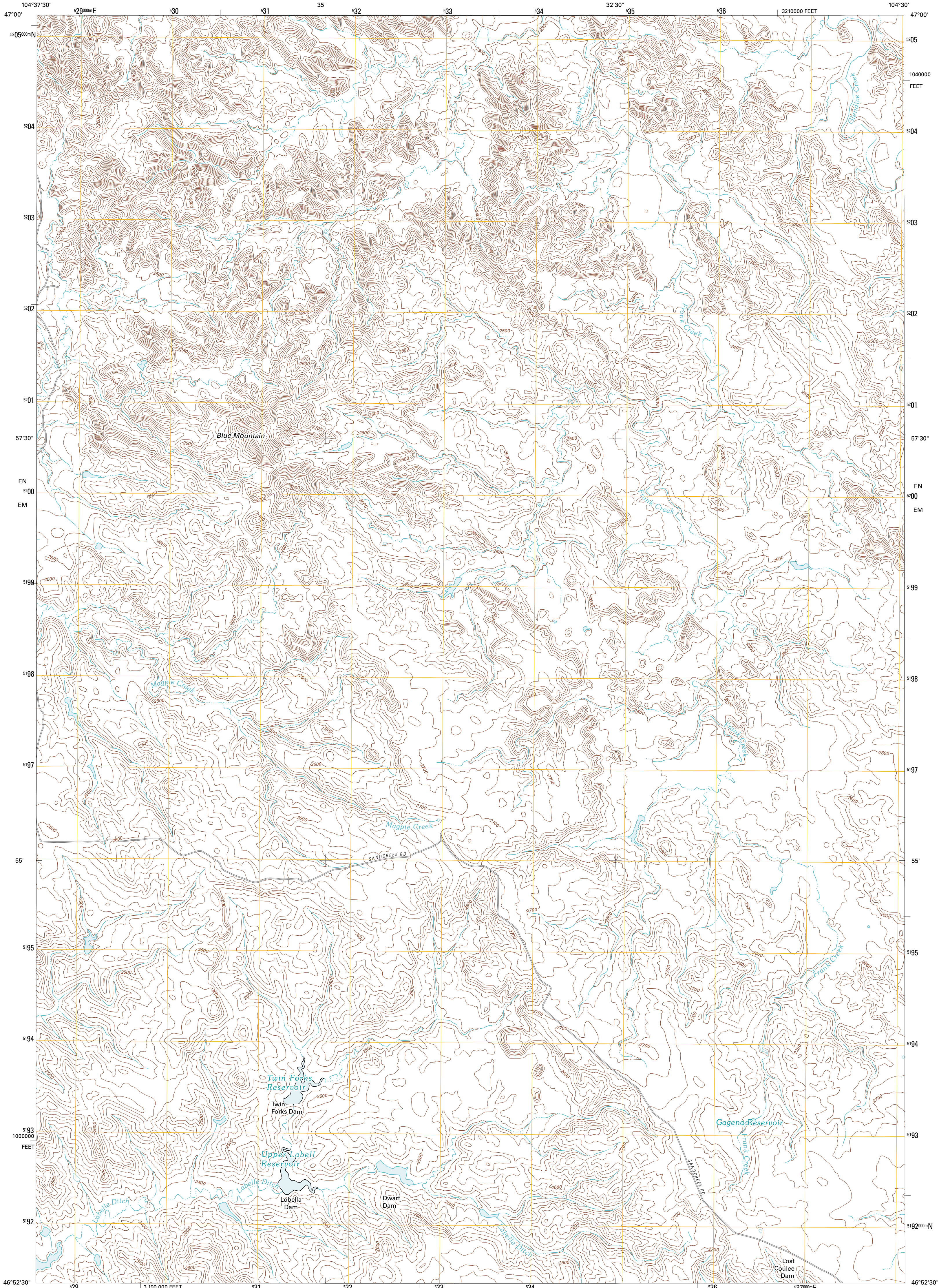




U.S. DEPARTMENT OF THE INTERIOR  
U. S. GEOLOGICAL SURVEY

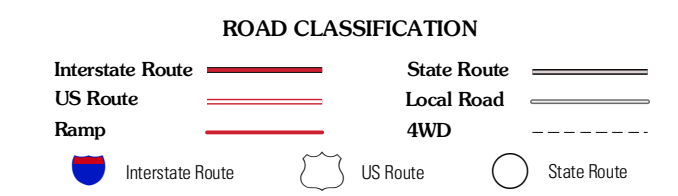
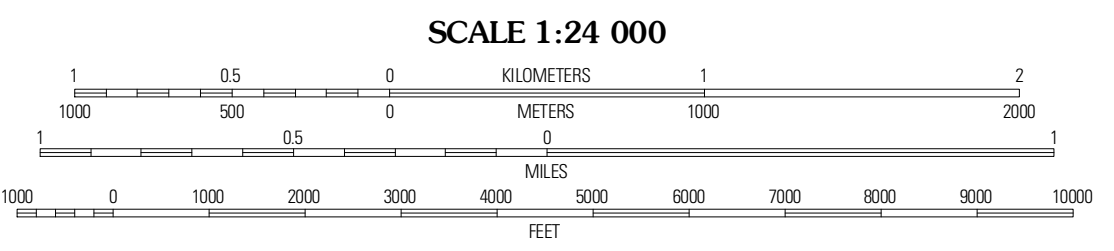
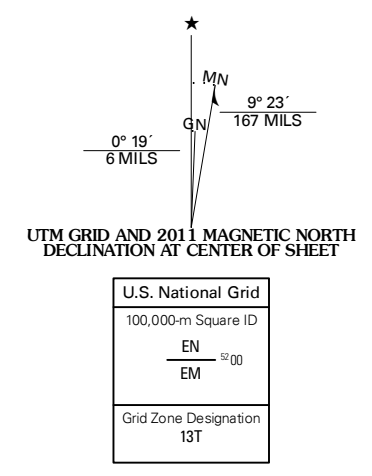


TWIN FORKS RESERVOIR QUADRANGLE  
MONTANA-DAWSON CO.  
7.5-MINUTE SERIES



Produced by the United States Geological Survey  
North American Datum of 1983 (NAD83)  
World Geodetic System of 1984 (WGS84). Projection and  
1 000-meter grid: Universal Transverse Mercator, Zone 13T  
10 000-foot ticks: Montana Coordinate System of 1983

Imagery.....NAIP, August 2009  
Roads.....2006-2010 Tele Atlas  
Names.....GNIS, 2010  
Hydrography.....National Hydrography Dataset, 2009  
Contours.....National Elevation Dataset, 2009  
Boundaries.....Census, IBWC, BIC, USGS, 1972 - 2010



QUADRANGLE LOCATION

Glendive	Allard	Cluster Buttes SW
Upper Magpie Reservoir	Twin Forks Reservoir	Hodges
Graveyard Hill SW	Graveyard Hill	Hodges SW

CONTOUR INTERVAL 40 FEET  
NORTH AMERICAN VERTICAL DATUM OF 1988  
This map was produced to conform with version 0.5.10 of the USGS US Topo Product Standard.  
A metadata file associated with this product is draft version 0.5.16

TWIN FORKS RESERVOIR, MT  
2011

ADJOINING 7.5 QUADRANGLES