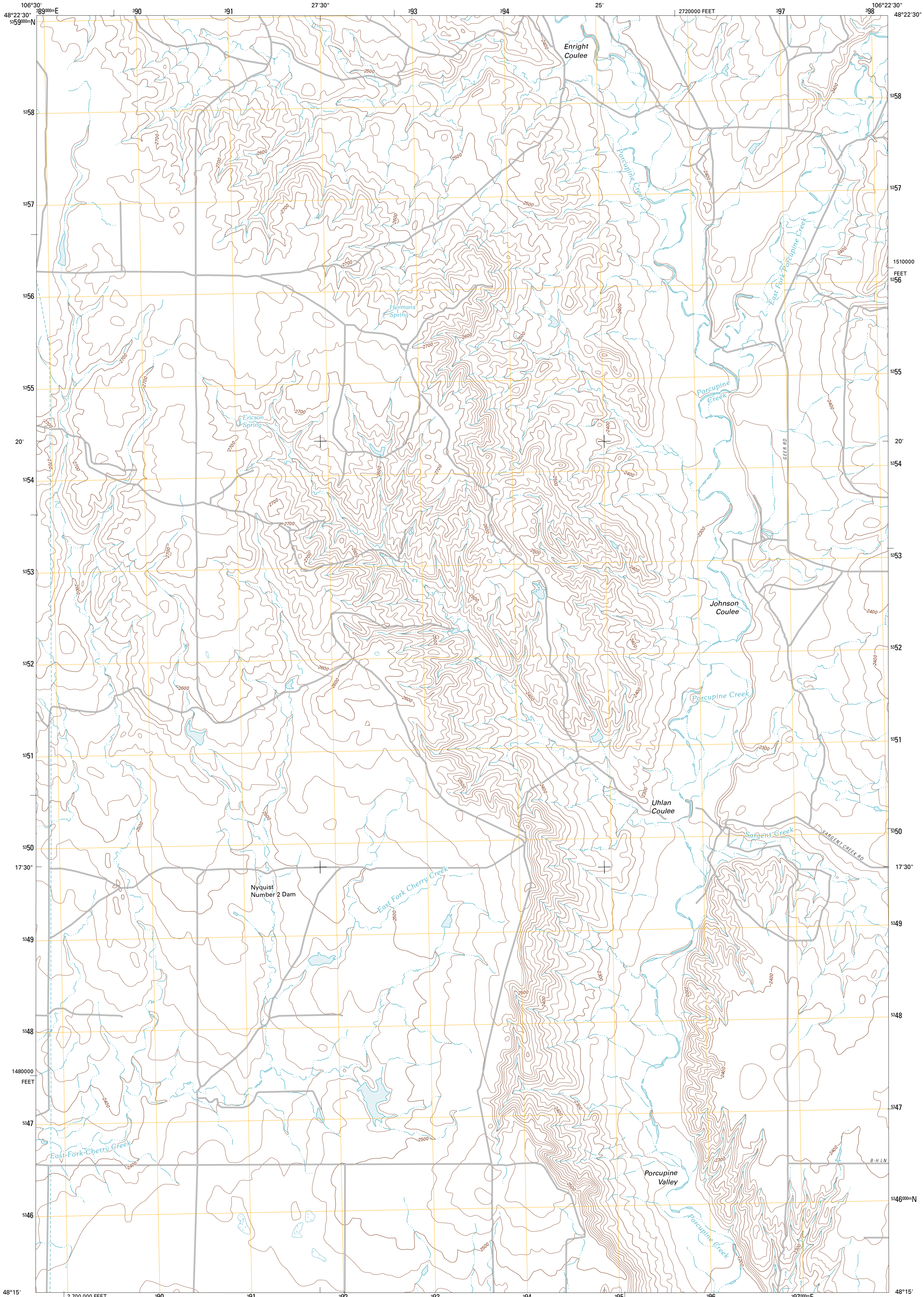




U.S. DEPARTMENT OF THE INTERIOR  
U. S. GEOLOGICAL SURVEY

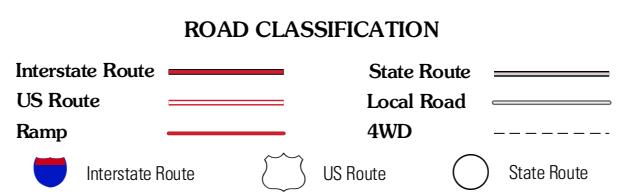
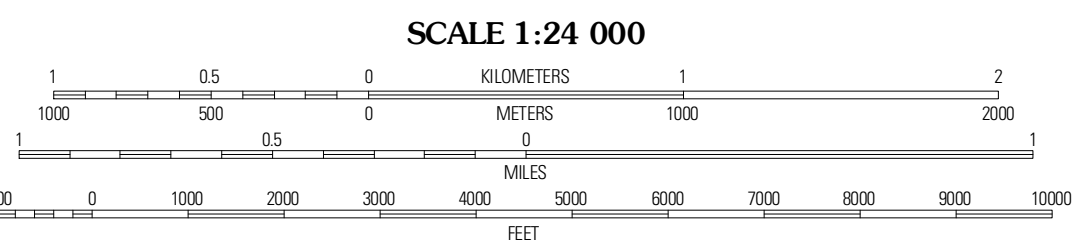
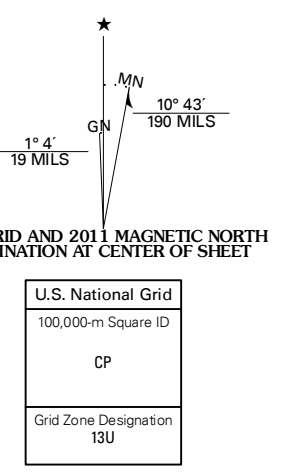


UHLAN COULEE QUADRANGLE  
MONTANA-VALLEY CO.  
7.5-MINUTE SERIES



Produced by the United States Geological Survey  
North American Datum of 1983 (NAD83)  
World Geodetic System of 1984 (WGS84). Projection and  
1 000-meter grid: Universal Transverse Mercator, Zone 13U  
10 000-foot ticks: Montana Coordinate System of 1983

Imagery.....N.A.P., July 2009  
Roads.....©2006-2010 Tele Atlas  
Names.....GNIS, 2010  
Hydrography.....National Hydrography Dataset, 2009  
Contours.....National Elevation Dataset, 1999  
Boundaries.....Census, IBWC, IBC, USGS, 1972 - 2010



Chapman Coulee NE	Lookout	Ballhead Reservoir
Hank Coulee	Uhlán Coulee	Sargent Creek
Whately	Lindlee Coulee	Nashua

CONTOUR INTERVAL 20 FEET  
NORTH AMERICAN VERTICAL DATUM OF 1988

This map was produced to conform with version 0.5.10 of the USGS US Topo Product Standard.  
A metadata file associated with this product is draft version 0.5.16

UHLAN COULEE, MT  
2011

ADJOINING 7.5' QUADRANGLES