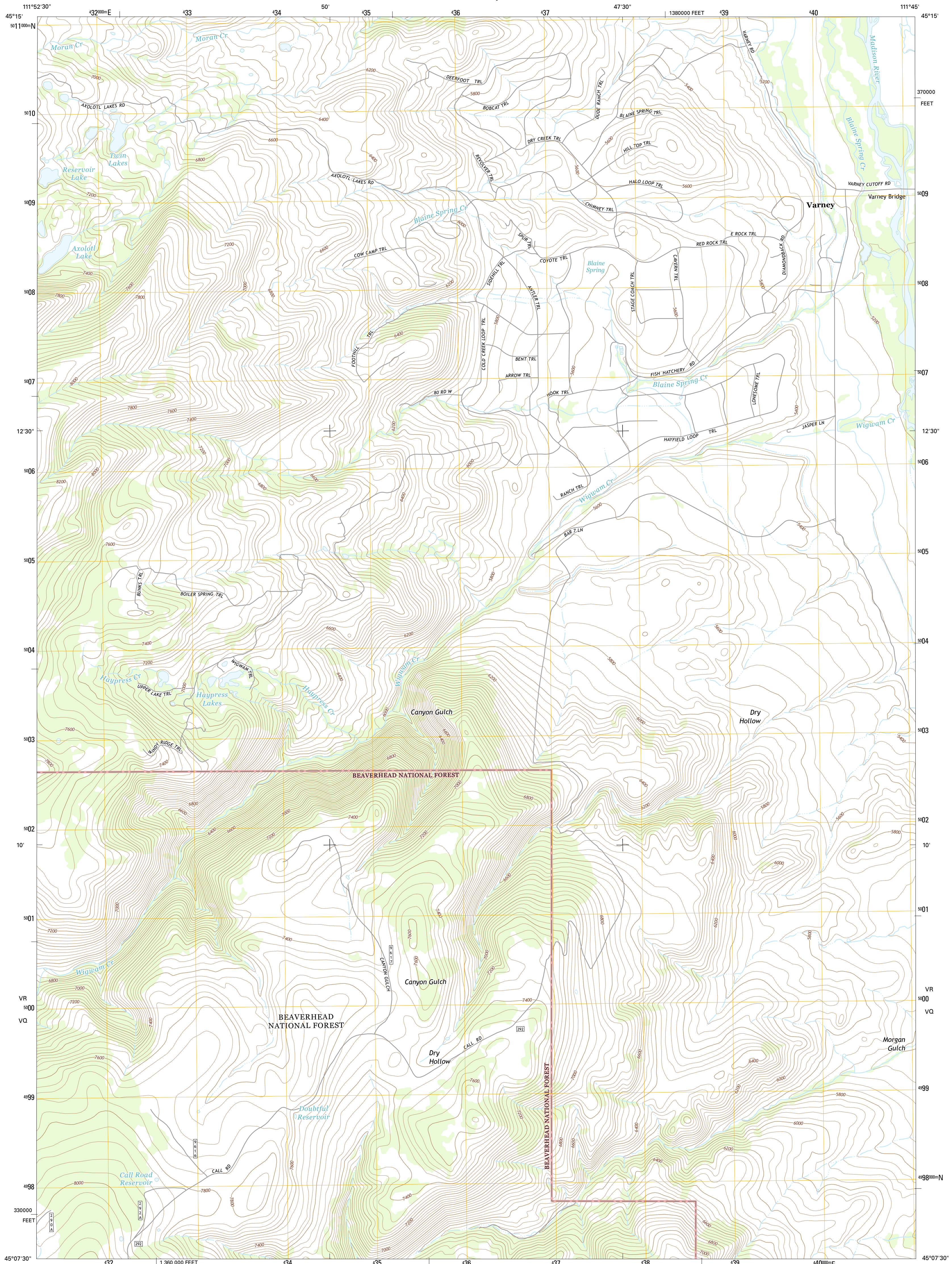




U.S. DEPARTMENT OF THE INTERIOR  
U.S. GEOLOGICAL SURVEY



VARNEY QUADRANGLE  
MONTANA-MADISON CO.  
7.5-MINUTE SERIES

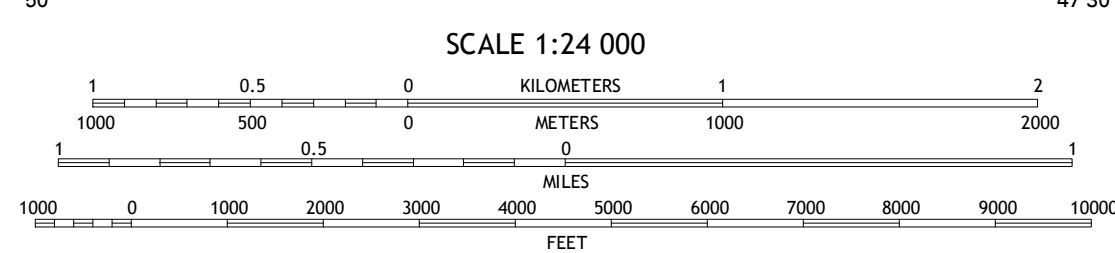
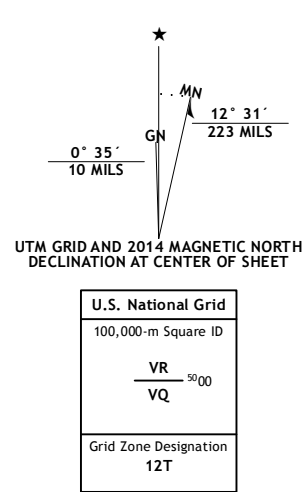


Produced by the United States Geological Survey

North American Datum of 1983 (NAD83)  
World Geodetic System of 1984 (WGS84). Projection and  
1 000-meter grid: Universal Transverse Mercator, Zone 12T  
10 000-foot ticks: Montana Coordinate System of 1983

This map is not a legal document. Boundaries may be  
generalized for this map scale. Private lands within government  
reservations may not be shown. Obtain permission before  
entering private lands.

Imagery.....NAIP, August 2011 - September 2011  
Roads.....HERE, 2013  
Roads within US Forest Service Lands.....FSTopo Data  
with limited Forest Service updates, 2013  
Names.....GNIS, 2013  
Hydrography.....National Hydrography Dataset, 2011  
Contours.....National Elevation Dataset, 2001  
Boundaries.....Multiple sources; see metadata file 1972 - 2013  
Public Land Survey System.....BLM, 2011



CONTOUR INTERVAL 40 FEET  
NORTH AMERICAN VERTICAL DATUM OF 1988

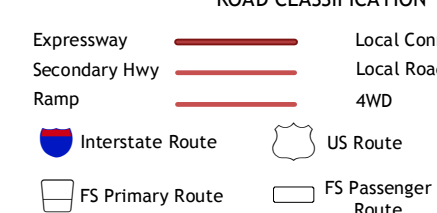
This map was produced to conform with the  
National Geospatial Program US Topo Product Standard, 2011.  
A metadata file associated with this product is draft version 0.6.16



1	2	3
4	5	6
7	8	

1 Virginia City  
2 Eightmile Creek  
3 Ennis  
4 Cirque Lake  
5 Cameron  
6 Warm Springs Creek  
7 Broomtail Ridge  
8 Bucks Nest

ROAD CLASSIFICATION



Check with local Forest Service unit  
for current travel conditions and restrictions.

VARNEY, MT  
2014



NSN 7540-01-000-0000  
GSA GEN. REG. NO. 27  
U.S. GPO: 2014 O-566-844  
NCA REF. NO. U.S.G.S.X