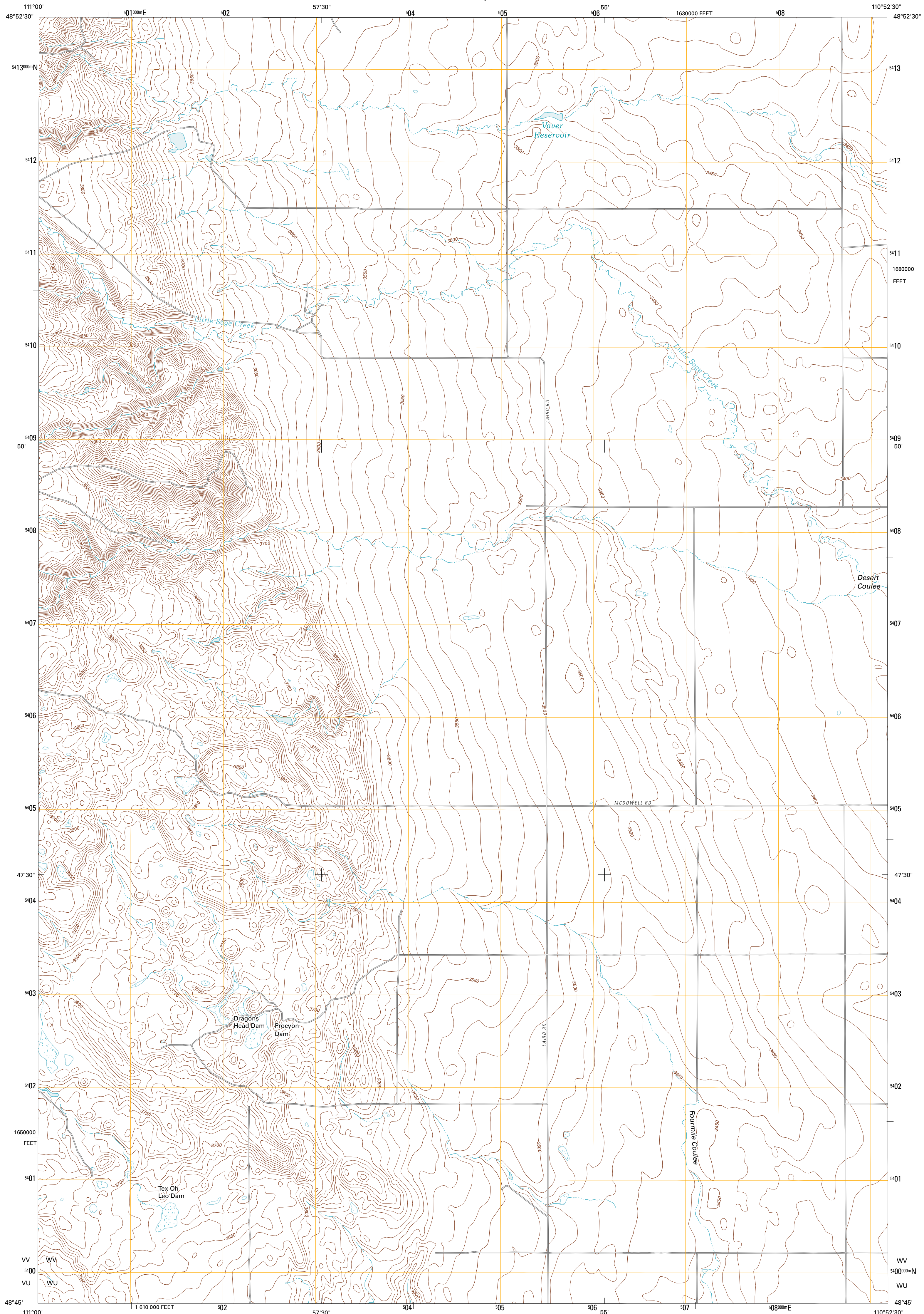




U.S. DEPARTMENT OF THE INTERIOR
U. S. GEOLOGICAL SURVEY



VAVER RESERVOIR QUADRANGLE
MONTANA-LIBERTY CO.
7.5-MINUTE SERIES

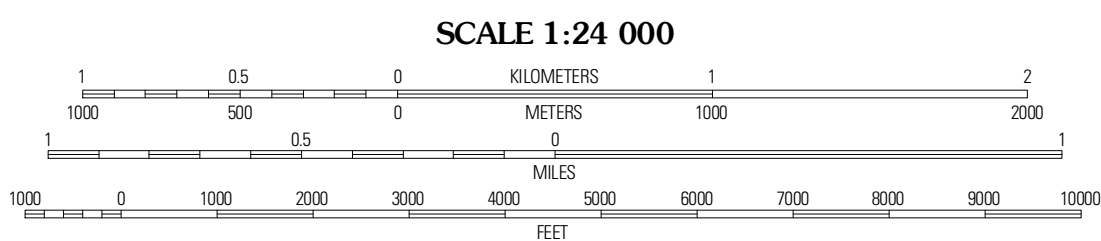


Produced by the United States Geological Survey
North American Datum of 1983 (NAD83)
World Geodetic System of 1984 (WGS84). Projection and
1 000-meter grid: Universal Transverse Mercator, Zone 12U
10 000-foot ticks: Montana Coordinate System of 1983

Imagery.....NAP, August 2009
Roads.....©2006-2010 Tele Atlas
Names.....National Geospatial Intelligence Agency, 2010
Hydrography.....National Hydrography Dataset, 2009
Contours.....National Elevation Dataset, 2008
Boundaries.....Census, IBWC, IBC, USGS, 1972 - 2010

UTM GRID AND 2011 MAGNETIC NORTH DECLINATION AT CENTER OF SHEET

U.S. National Grid	12U
100,000-meter Square ID	WV
	WU
Grid Zone Designation	12U



CONTOUR INTERVAL 10 FEET
NORTH AMERICAN VERTICAL DATUM OF 1988

This map was produced to conform with version 0.5.10
of the USGS US Topo Product Standard.
A metadata file associated with this product is draft version 0.5.16



ROAD CLASSIFICATION

Interstate Route	State Route
US Route	Local Road
Ramp	4WD

ADJOINING 7.5' QUADRANGLES

Brigham Lake	Laird School	Bobcat Coulee NE
Mount Lebanon	Vaver Reservoir	Bobcat Coulee SE
Lakey Ranch	Chester NW	Chester NE

VAVER RESERVOIR, MT
2011