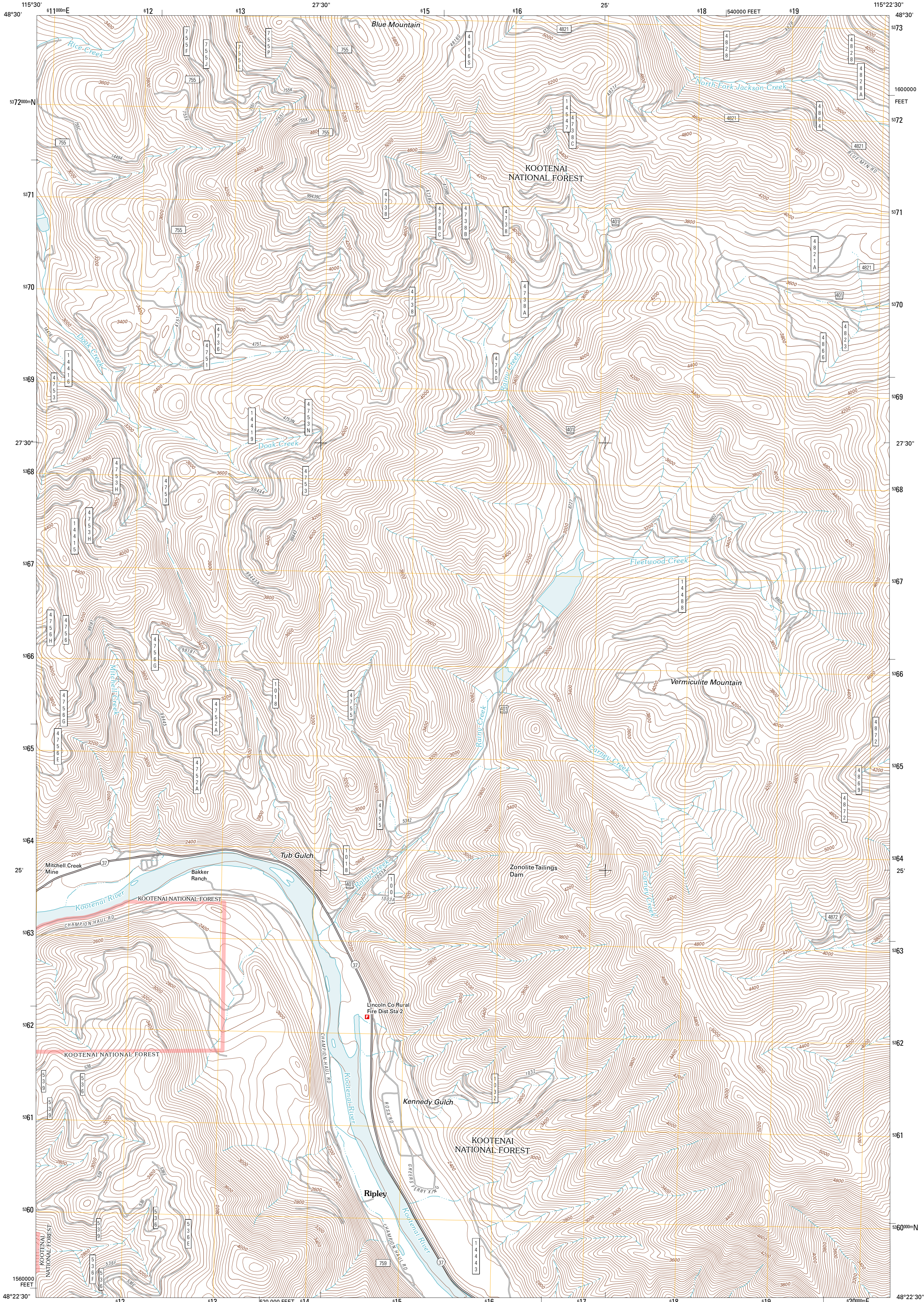




U.S. DEPARTMENT OF THE INTERIOR
U. S. GEOLOGICAL SURVEY

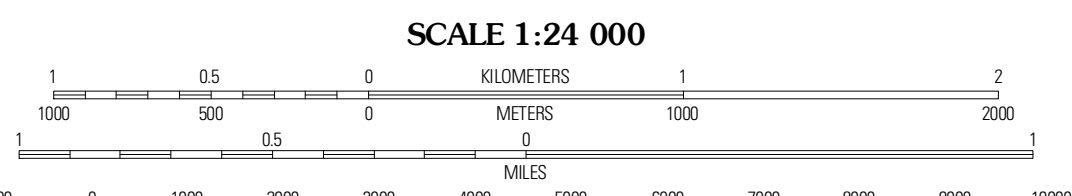
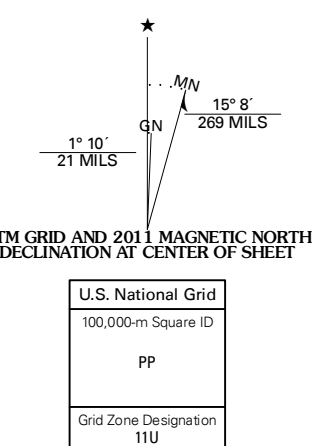


VERMICULITE MOUNTAIN QUADRANGLE
MONTANA-LINCOLN CO.
7.5-MINUTE SERIES



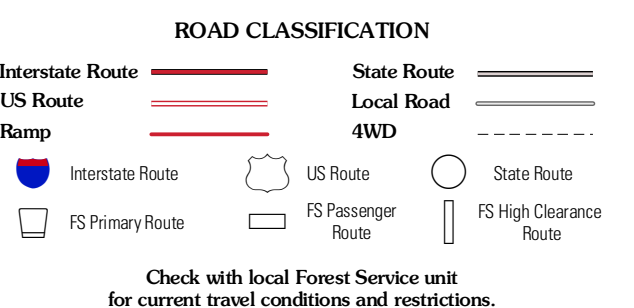
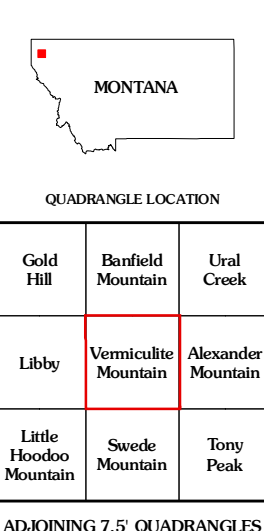
Produced by the United States Geological Survey
North American Datum of 1983 (NAD83)
World Geodetic System of 1984 (WGS84). Projection and
1 000-meter grid: Universal Transverse Mercator, Zone 11U
10 000-foot ticks: Montana Coordinate System of 1983

Imagery: NADP, July 2009
Roads: ©2006-2010 Tele Atlas
Roads within US Forest Service Lands: FSTopo Data
with limited Forest Service updates, 2009
Names: ©2006-2010
Hydrography: National Hydrography Dataset, 2009
Contours: National Elevation Dataset, 2003
Boundaries: Census, IBWC, IBC, USGS, 1972 - 2010



CONTOUR INTERVAL 40 FEET
NORTH AMERICAN VERTICAL DATUM OF 1988

This map was produced to conform with version 0.5.10
of the USGS US Topo Product Standard.
A metadata file associated with this product is draft version 0.5.16



VERMICULITE MOUNTAIN, MT
2011