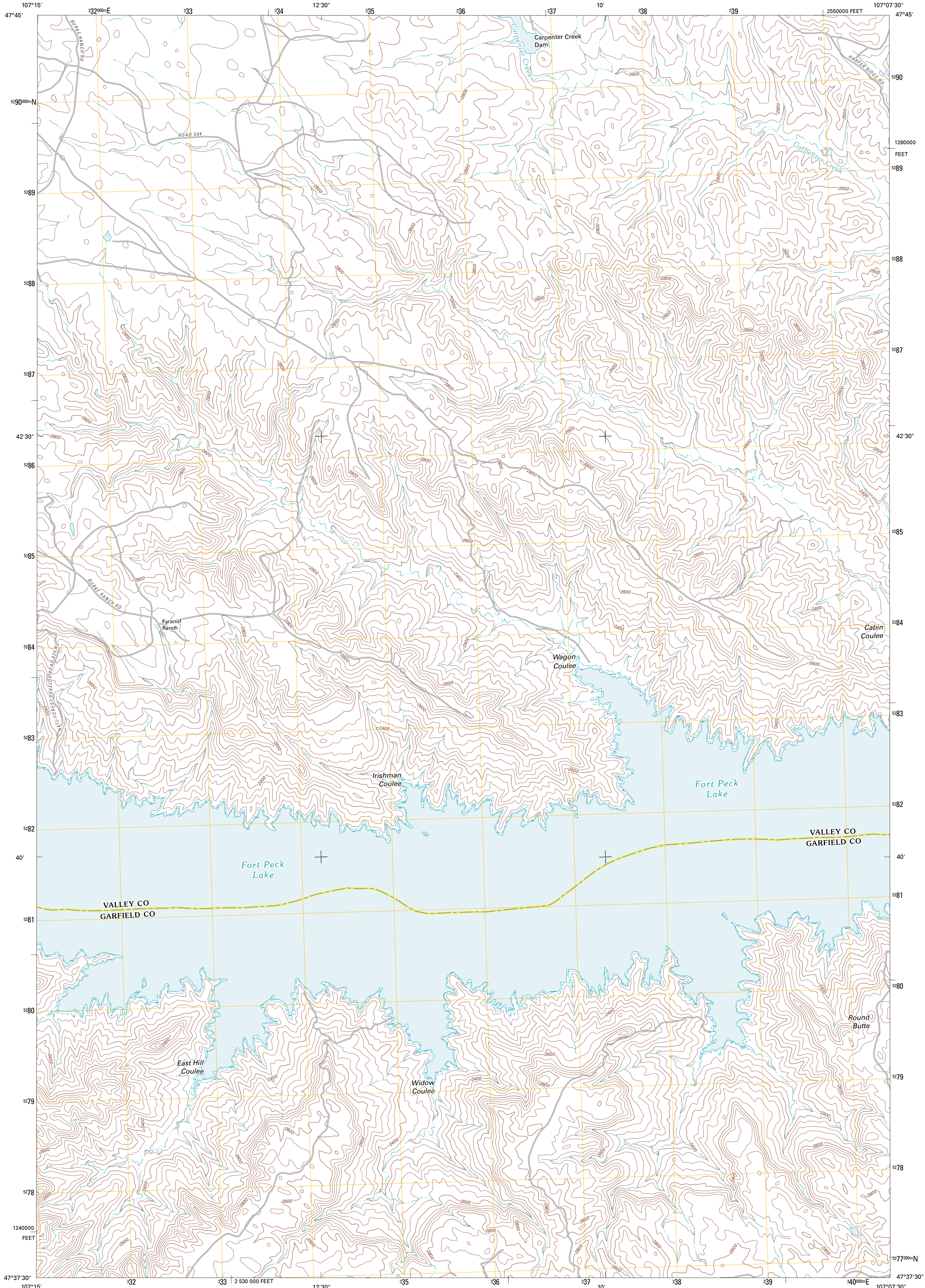




U.S. DEPARTMENT OF THE INTERIOR
U. S. GEOLOGICAL SURVEY

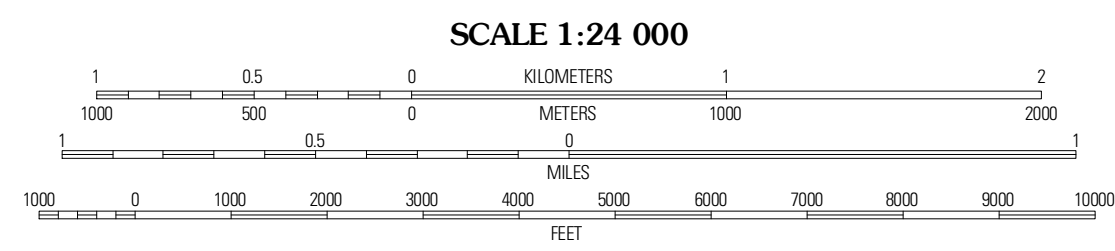
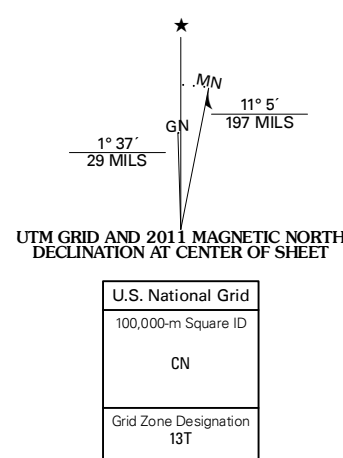


WAGON COULEE QUADRANGLE
MONTANA
7.5-MINUTE SERIES



Produced by the United States Geological Survey
North American Datum of 1983 (NAD83)
World Geodetic System of 1984 (WGS84). Projection and
1 000-meter grid: Universal Transverse Mercator, Zone 13T
10 000-foot ticks: Montana Coordinate System of 1983

Imagery.....NAIP, July 2009
Roads.....©2006-2010 Tele Atlas
Names.....GNS, 2010
Hydrography.....National Hydrography Dataset, 2009
Contours.....National Elevation Dataset, 2000
Boundaries.....Census, IBWC, IBC, USGS, 1972 - 2010



SCALE 1:24 000
CONTOUR INTERVAL 40 FEET
NORTH AMERICAN VERTICAL DATUM OF 1988
This map was produced to conform with version 0.5.10
of the USGS US Topo Product Standard.
A metadata file associated with this product is draft version 0.5.16

ROAD CLASSIFICATION

Interstate Route	State Route
US Route	Local Road
Ramp	AWD

Interstate Route
 US Route
 State Route

QUADRANGLE LOCATION

Smith Coulee	Gibson Coulee	Murray Hill
Wade Coulee	Wagon Coulee	Harper Camp
Chalk Butte	Hill Hollow	Trumbo Ranch

ADJOINING 7.5' QUADRANGLES

WAGON COULEE, MT
2011