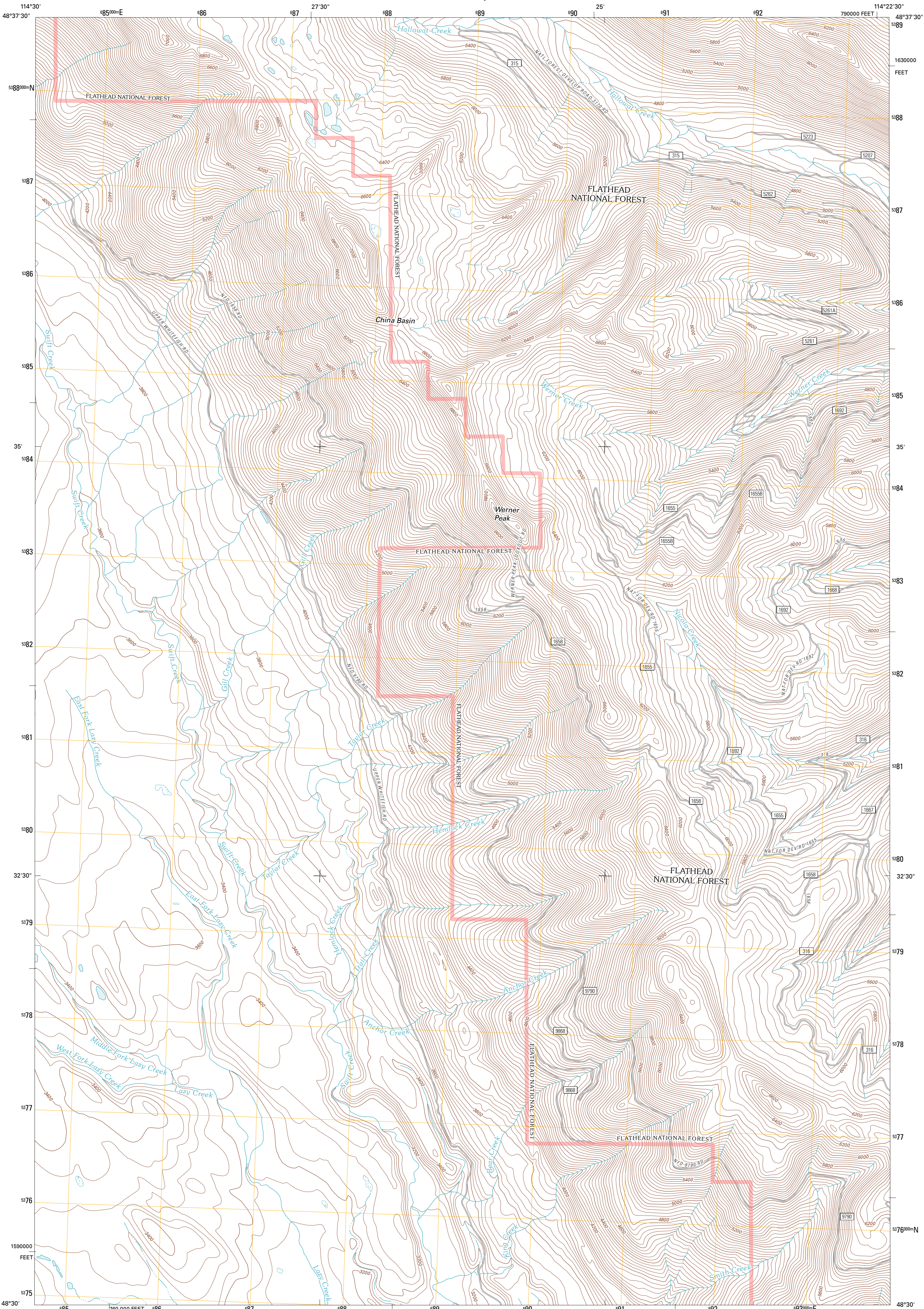




U.S. DEPARTMENT OF THE INTERIOR  
U. S. GEOLOGICAL SURVEY

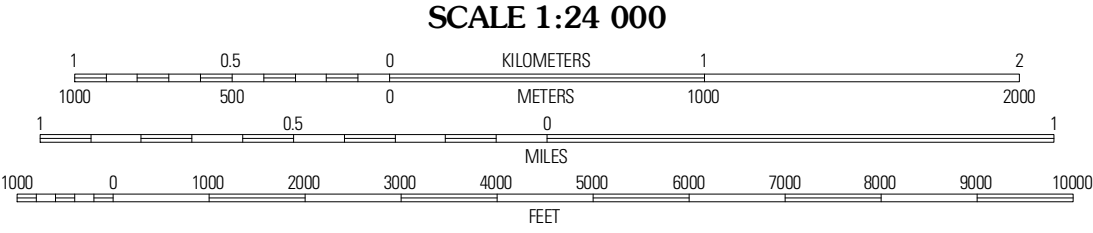
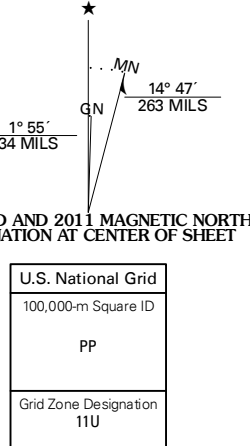


WERNER PEAK QUADRANGLE  
MONTANA-FLATHEAD CO.  
7.5-MINUTE SERIES

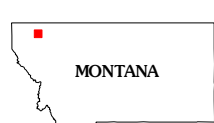


Produced by the United States Geological Survey  
North American Datum of 1983 (NAD83)  
World Geodetic System of 1984 (WGS84). Projection and  
1 000-meter grid: Universal Transverse Mercator, Zone 11U  
10 000-foot ticks: Montana Coordinate System of 1983

Imagery:.....NAIP, July 2009  
Roads:.....©2006-2010 Tele Atlas  
Roads within US Forest Service Lands:.....FS Topo Data  
with limited Forest Service updates, 2009  
Names:.....National Hydrography Dataset, 2009  
Contours:.....National Elevation Dataset, 2001  
Boundaries:.....Census, IBWC, IBC, USGS, 1972 - 2010



CONTOUR INTERVAL 40 FEET  
NORTH AMERICAN VERTICAL DATUM OF 1988  
This map was produced to conform with version 0.5.10  
of the USGS US Topo Product Standard.  
A metadata file associated with this product is draft version 0.5.16

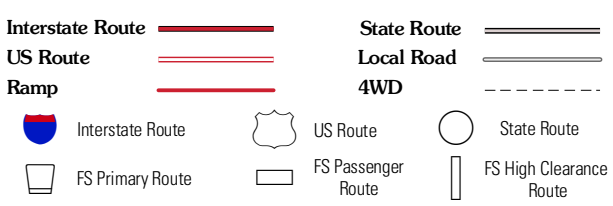


QUADRANGLE LOCATION

Upper Whitefish Lake	Moose Peak	Cyclone Lake
Olney	Werner Peak	Scokehook Creek
Tully Lake	Beaver Lake	Whitefish

ADJOINING 7.5' QUADRANGLES

ROAD CLASSIFICATION



Check with local Forest Service unit  
for current travel conditions and restrictions.

WERNER PEAK, MT  
2011