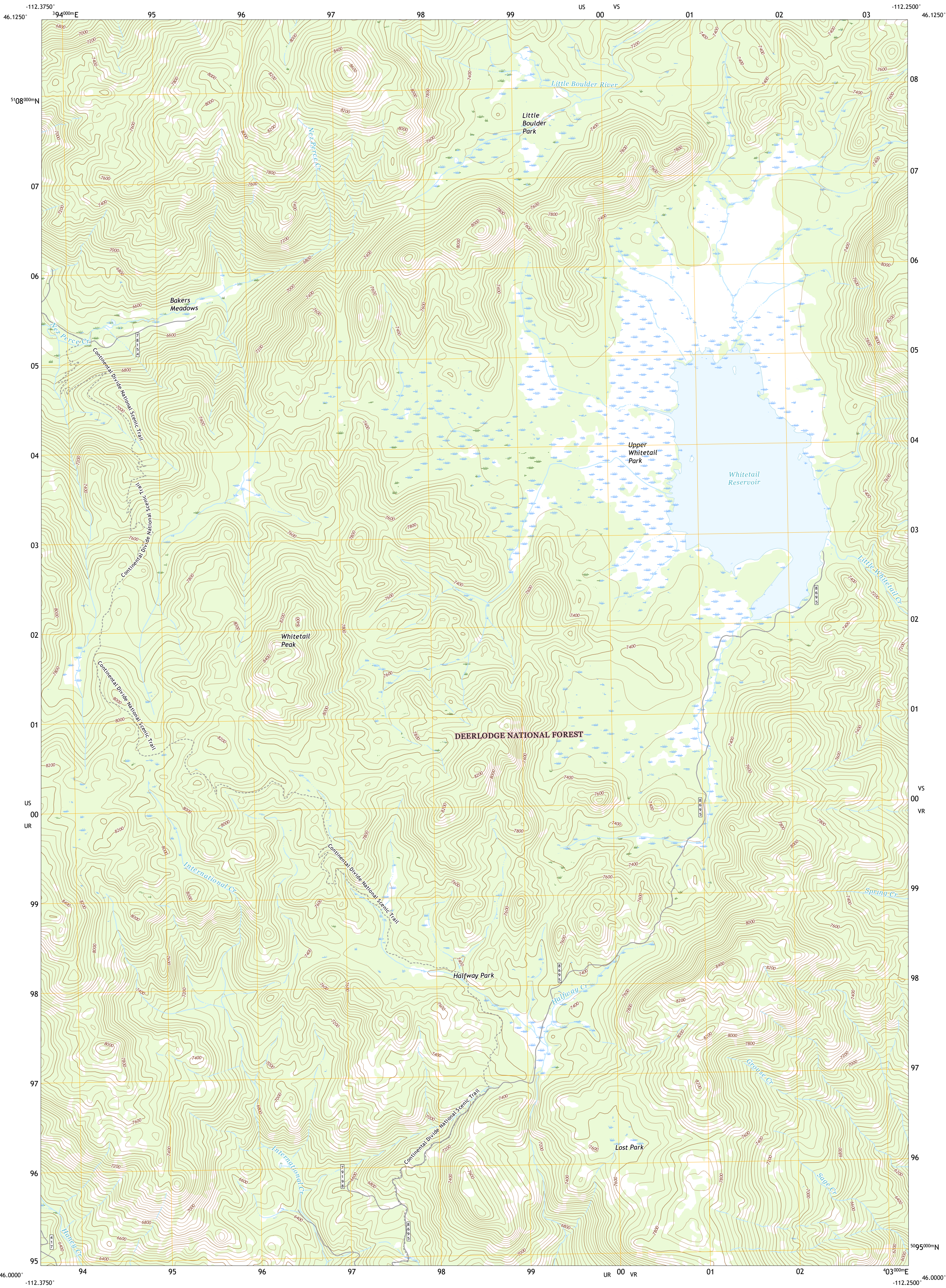




U.S. DEPARTMENT OF THE INTERIOR  
U.S. GEOLOGICAL SURVEY

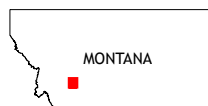
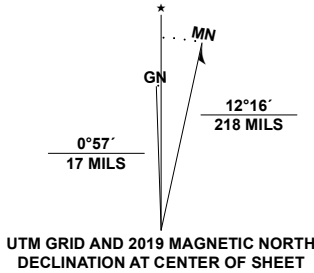


WHITETAIL PEAK QUADRANGLE  
MONTANA - JEFFERSON COUNTY  
7.5-MINUTE SERIES



**Produced by the United States Geological Survey**  
North American Datum of 1983 (NAD83)  
World Geodetic System of 1984 (WGS84). Projection and  
1 000-meter grid: Universal Transverse Mercator, Zone 12T  
This map is not a legal document. Boundaries may be  
generalized for this map scale. Private lands within government  
reservations may not be shown. Obtain permission before  
entering private lands.

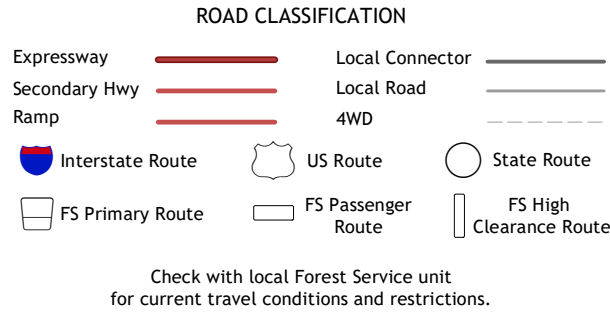
Imagery.....NAIP, October 2015 - January 2016  
Roads.....U.S. Census Bureau, Not Available  
Roads within US Forest Service Lands.....FS Topo Data  
with limited Forest Service updates, 2013  
Names.....GNIS, 1980 - 2020  
Hydrography.....National Hydrography Dataset, 2002 - 2020  
Contours.....National Elevation Dataset, 2005  
Boundaries.....Multiple sources: see metadata file 2018 - 2019  
Public Land Survey System.....BLM, 2018  
Wetlands.....FWS National Wetlands Inventory 2005 - 2011



1	2	3
4	5	6
7	8	9

ADJOINING QUADRANGLES

- 1 Sheephead Mountain
- 2 Bison Canyon
- 3 Boulder West
- 4 Elk Park Pass
- 5 Ratio Mountain
- 6 Homestake
- 7 Delmore Lake
- 8 Dry Mountain



WHITETAIL PEAK, MT  
2020

