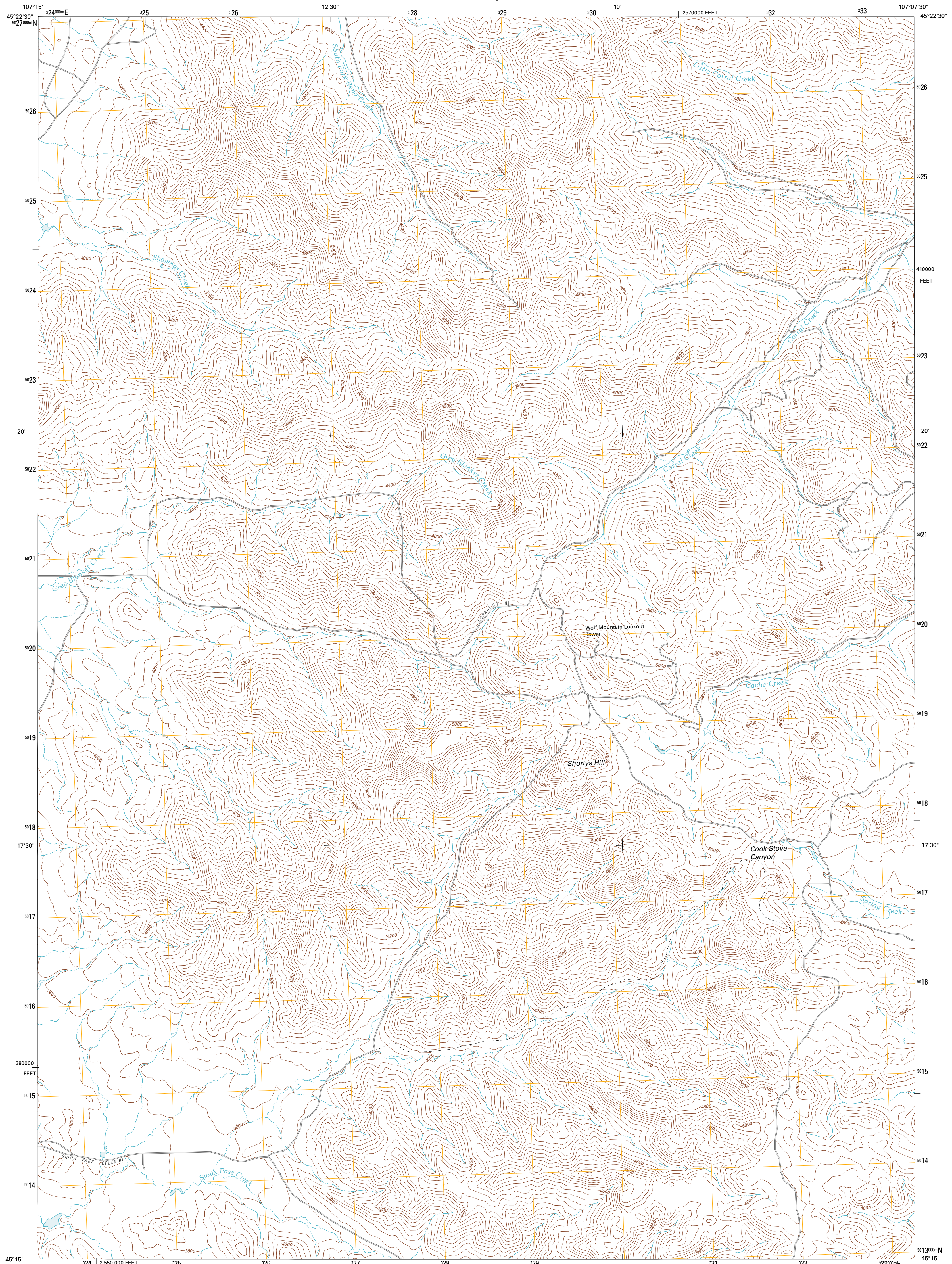




U.S. DEPARTMENT OF THE INTERIOR  
U. S. GEOLOGICAL SURVEY



WOLF MOUNTAIN LOOKOUT QUADRANGLE  
MONTANA-BIG HORN CO.  
7.5-MINUTE SERIES

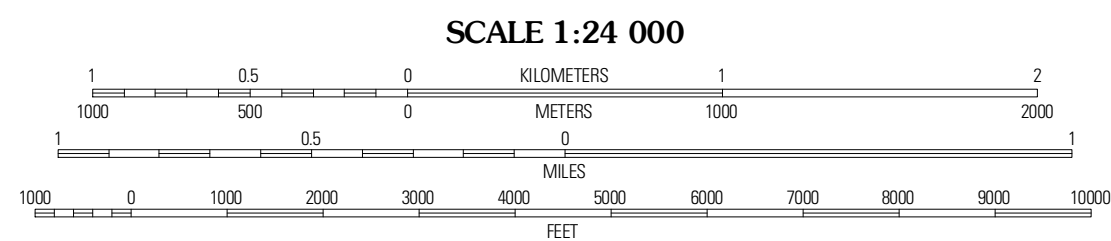


Produced by the United States Geological Survey  
North American Datum of 1983 (NAD83)  
World Geodetic System of 1984 (WGS84). Projection and  
1 000-meter grid: Universal Transverse Mercator, Zone 13T  
10 000-foot ticks: Montana Coordinate System of 1983

Imagery.....NAIP, June 2009  
Roads.....©2006-2010 Tele Atlas  
Names.....GNIS, 2010  
Hydrography.....National Hydrography Dataset, 2009  
Contours.....National Elevation Dataset, 2009  
Boundaries.....Census, IBWC, IBC, USGS, 1972 - 2010

UTM GRID AND 2011 MAGNETIC NORTH  
DECLINATION AT CENTER OF SHEET

U.S. National Grid  
100,000-m Square ID  
CL  
Grid Zone Designation  
13T



SCALE 1:24 000

CONTOUR INTERVAL 40 FEET  
NORTH AMERICAN VERTICAL DATUM OF 1988

This map was produced to conform with version 0.5.10  
of the USGS US Topo Product Standard.  
A metadata file associated with this product is draft version 0.5.16



QUADRANGLE LOCATION

Lodge Grass NE	Thompson Creek NW	Thompson Creek
Lodge Grass	Wolf Mountain Lookout	Spring Creek Ranch
Wyda NE	Kid Creek	Bar V Ranch NE

ADJOINING 7.5' QUADRANGLES

ROAD CLASSIFICATION

Interstate Route State Route   
US Route Local Road   
Ramp 4WD

Interstate Route State Route  
 US Route Local Road  
 4WD

WOLF MOUNTAIN LOOKOUT, MT  
2011