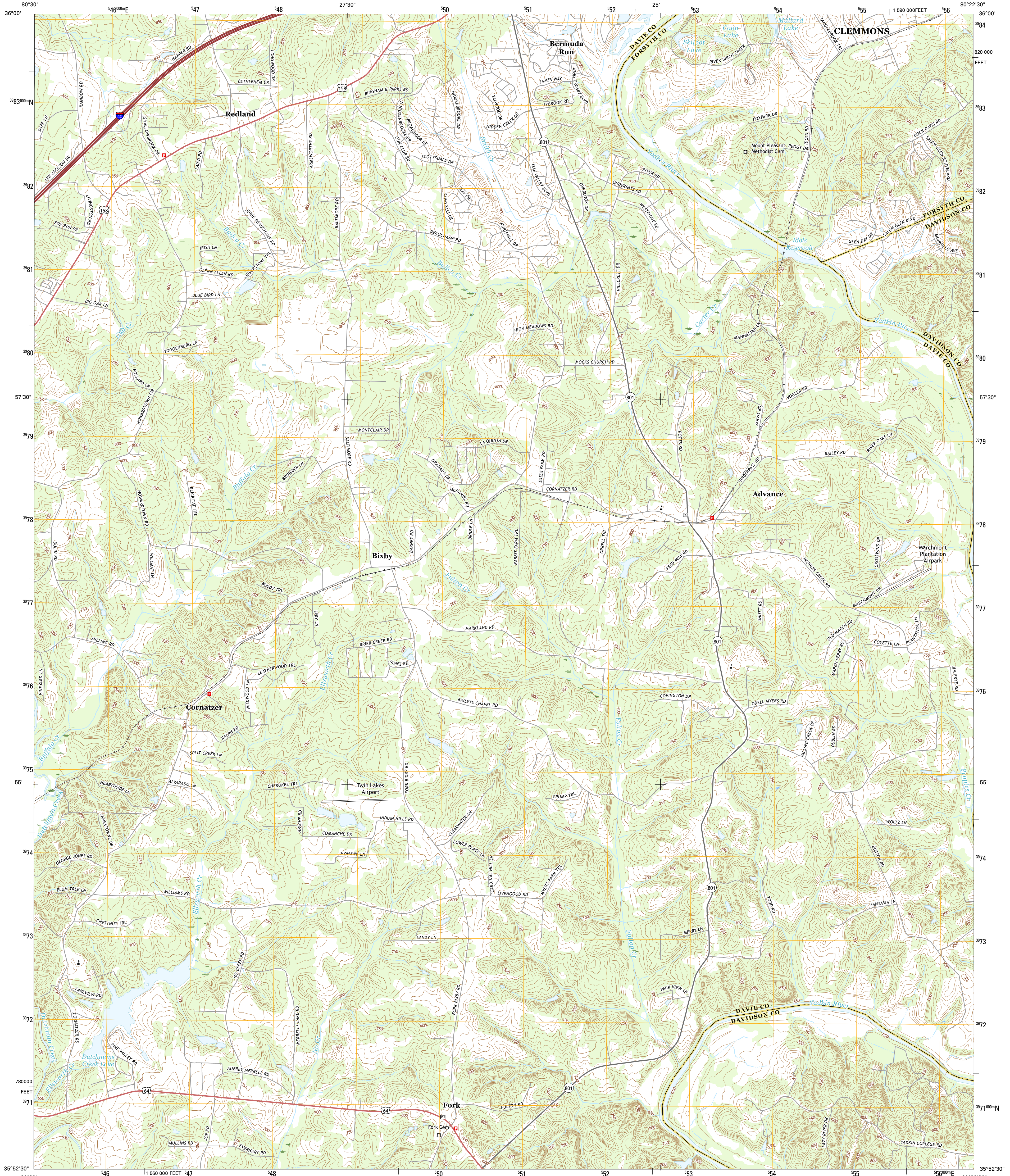




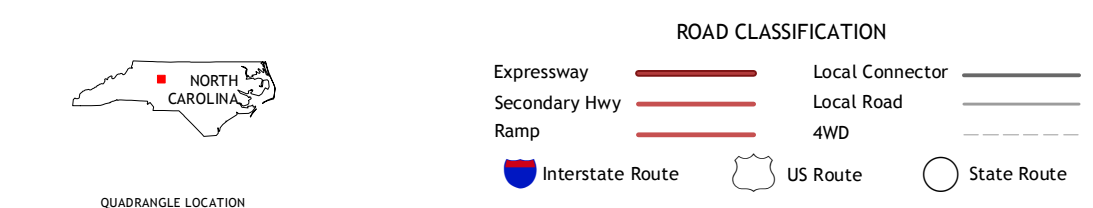
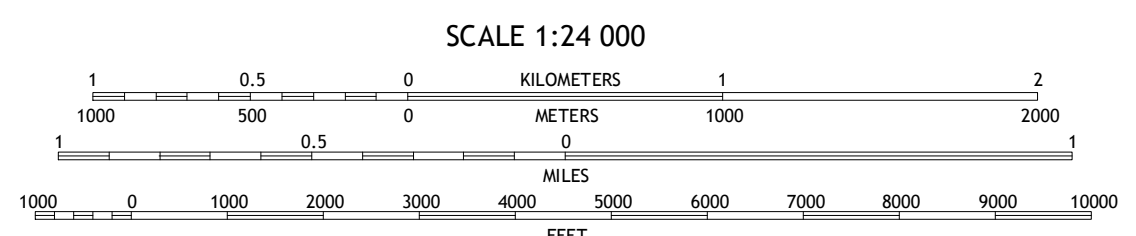
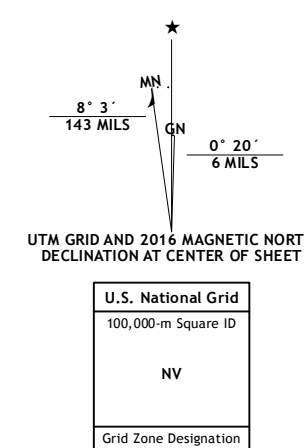
U.S. DEPARTMENT OF THE INTERIOR  
U.S. GEOLOGICAL SURVEY



ADVANCE QUADRANGLE  
NORTH CAROLINA  
7.5-MINUTE SERIES



Produced by the United States Geological Survey  
North American Datum of 1983 (NAD83)  
World Geodetic System of 1984 (WGS84). Projection and  
1 000-foot ticks: North Carolina Coordinate System of 1983  
This map is not a legal document. Boundaries may be  
generalized for this map scale. Private lands within government  
reservations may not be shown. Obtain permission before  
entering private lands.  
Imagery.....NAIP, July, 2014  
Roads.....U.S. Census Bureau, 2015 - 2016  
Names.....GNIS, 2016  
Hydrography.....National Hydrography Dataset, 2014  
Contours.....National Elevation Dataset, 2008  
Boundaries.....Multiple sources; see metadata file 1972 - 2016  
Wetlands.....FWS National Wetlands Inventory 1977 - 2014



QUADRANGLE LOCATION

ADJOINING QUADRANGLES

1	2	3
4	5	6
7	8	

1 Farmington  
2 Clemmons  
3 Winston-Salem West  
4 Mocksville  
5 Welcome  
6 Coolemeec  
7 Churchland  
8 Lexington West

ADVANCE, NC  
2016

