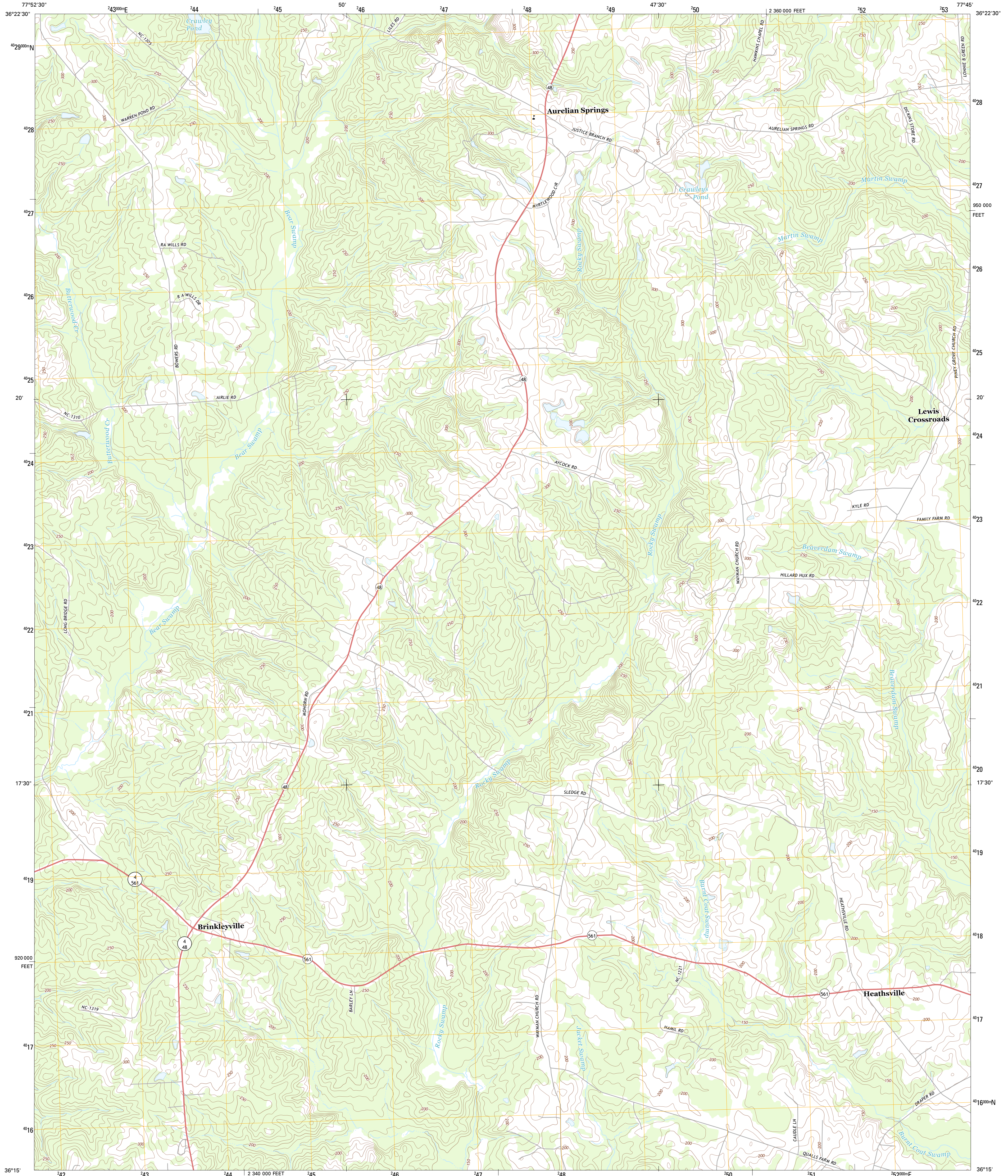




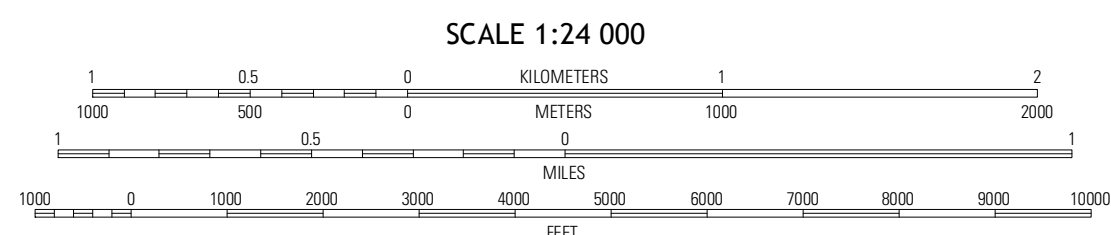
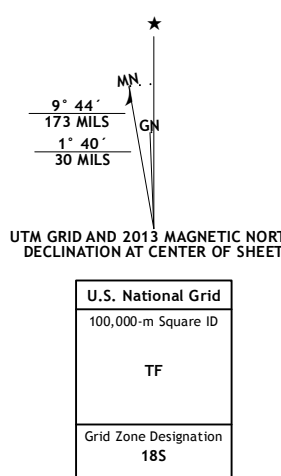
U.S. DEPARTMENT OF THE INTERIOR  
U. S. GEOLOGICAL SURVEY



AURELIAN SPRINGS QUADRANGLE  
NORTH CAROLINA-HALIFAX CO.  
7.5-MINUTE SERIES

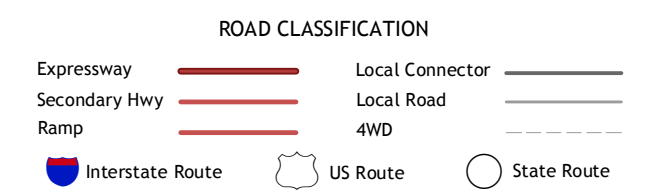


Produced by the United States Geological Survey  
North American Datum of 1983 (NAD83)  
World Geodetic System of 1984 (WGS84)  
1 000-meter grid: Universal Transverse Mercator, Zone 18S  
10 000-foot ticks: North Carolina Coordinate System of 1983



QUADRANGLE LOCATION

Littleton	Thelma	Rossmore Rapids
Hollister	Aurelian Springs	Darlington
Essex	Ringwood	Esfield



Imagery.....NAIP, May 2012 - June 2012  
Roads.....C2006-2012, TomTom Names.....GNIS, 2012  
Hydrography.....National Hydrography Dataset, 2012  
Contours.....National Elevation Dataset, 2008  
Boundaries.....Census, IBWC, IBC, USGS, 1972 - 2012

CONTOUR INTERVAL 10 FEET  
NORTH AMERICAN VERTICAL DATUM OF 1988  
This map was produced to conform with the National Geospatial Program US Topo Product Standard, 2011. A metadata file associated with this product is draft version 0.6.11

AURELIAN SPRINGS, NC  
2013

ADJOINING 7.5 QUADRANGLES