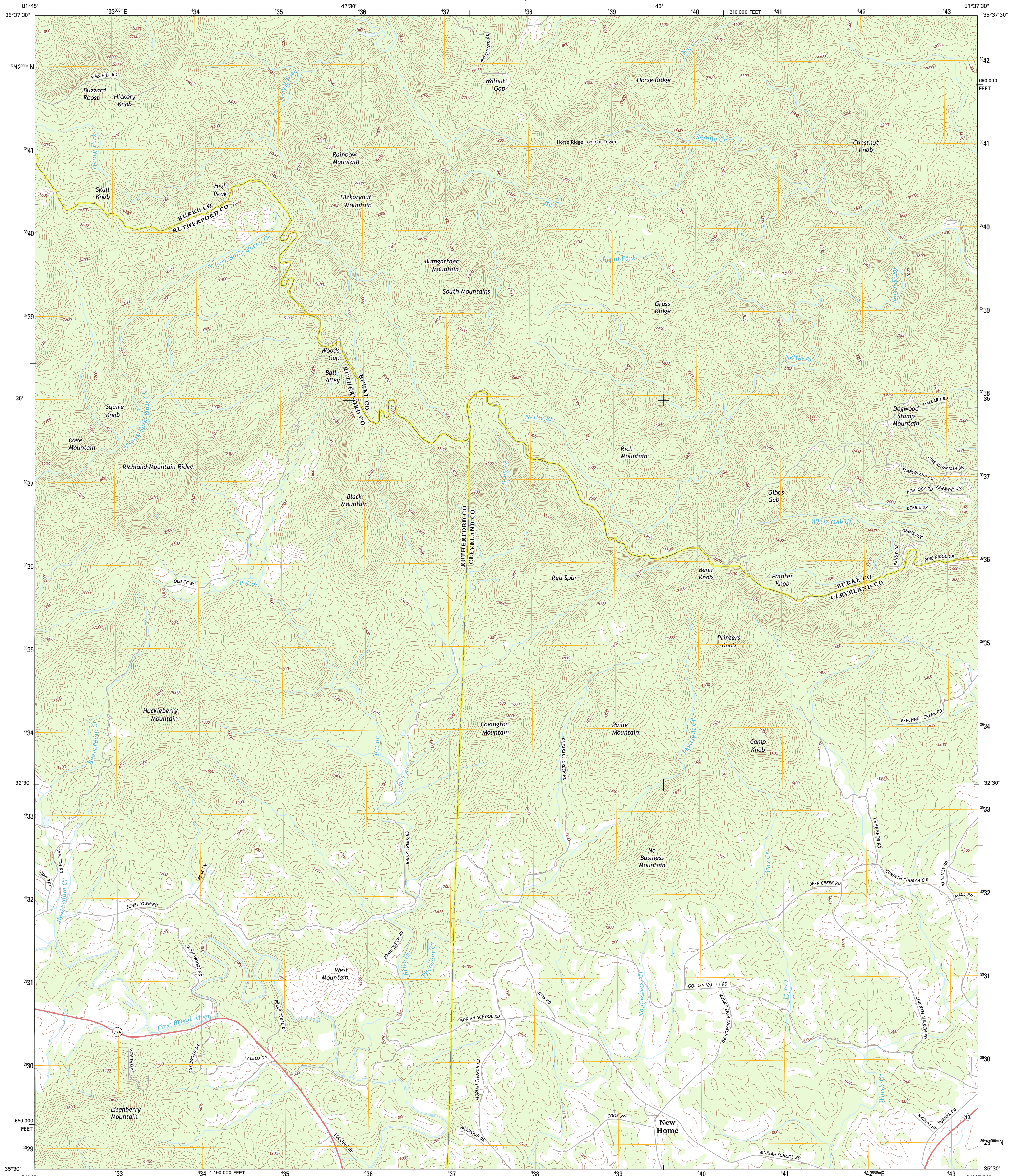




U.S. DEPARTMENT OF THE INTERIOR
U. S. GEOLOGICAL SURVEY



BENN KNOB QUADRANGLE
NORTH CAROLINA
7.5-MINUTE SERIES



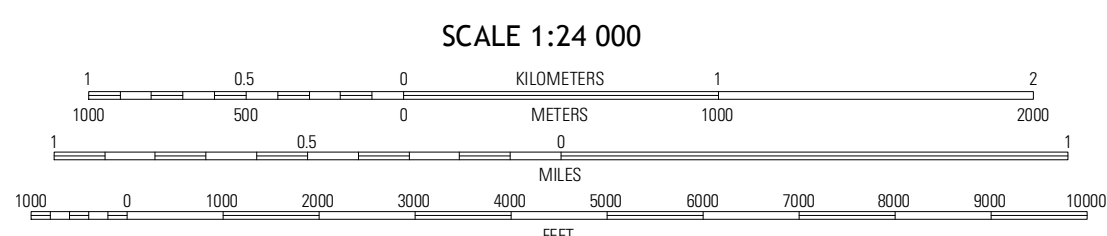
Produced by the United States Geological Survey
North American Datum of 1983 (NAD83)
World Geodetic System of 1984 (WGS84). Projection and
1 000-meter grid: Universal Transverse Mercator, Zone 17S
10 000-foot ticks: North Carolina Coordinate System of 1983

UTM GRID AND 2011 MAGNETIC NORTH DECLINATION AT CENTER OF SHEET

6° 59' 12.4" N
07° 24' 0" E
175

U.S. National Grid
100,000-m Square ID
MV

Grid Zone Designation
17S



ROAD CLASSIFICATION

Expressway
Secondary Hwy
Ramp
Interstate Route
Local Connector
Local Road
4WD
US Route
State Route

QUADRANGLE LOCATION

Glen Alpine	Morganton South	Valdese
Dyersville	Benn Knob	Casar
Sunshine	Pulleville	Lawndale

BENN KNOB, NC
2013

CONTOUR INTERVAL 40 FEET
NORTH AMERICAN VERTICAL DATUM OF 1988

This map was produced to conform with the
National Geospatial Program US Topo Product Standard, 2011.
A metadata file associated with this product is draft version 0.6.11

ADJOINING 7.5 QUADRANGLES