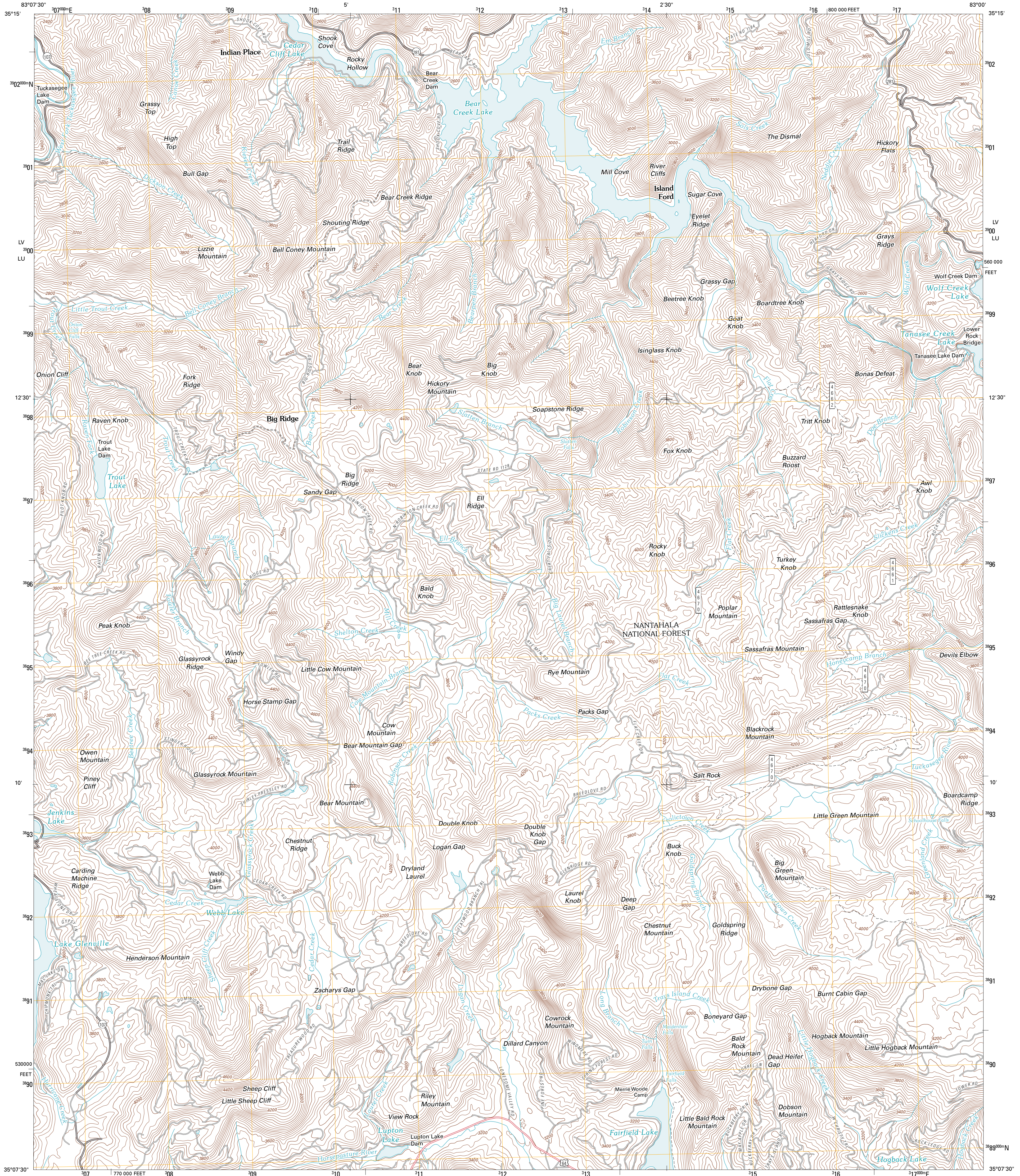




U.S. DEPARTMENT OF THE INTERIOR  
U. S. GEOLOGICAL SURVEY

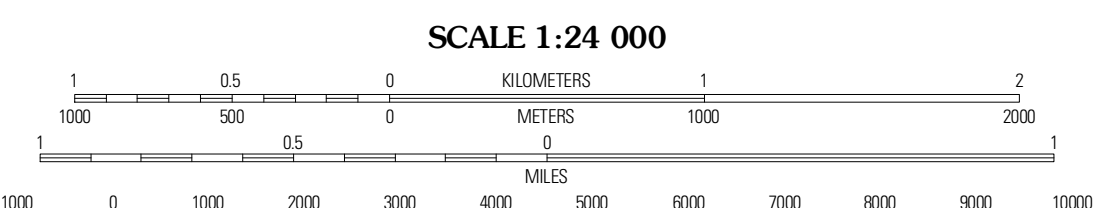
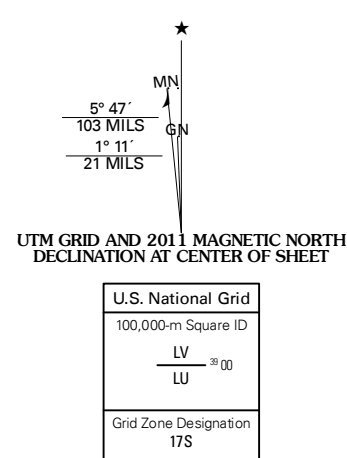


**BIG RIDGE QUADRANGLE**  
NORTH CAROLINA  
7.5-MINUTE SERIES



Produced by the United States Geological Survey  
North American Datum of 1983 (NAD83)  
World Geodetic System of 1984 (WGS84). Projection and  
1 000-meter grid: Universal Transverse Mercator, Zone 17S  
10 000-foot ticks: North Carolina Coordinate System of 1983

Imagery:.....N.A.I.P., October 2009  
Roads:.....©2006-2010 Tele Atlas  
Roads within US Forest Service Lands:.....FSTopo Data  
with limited Forest Service updates, 2009  
Names:.....GNIS, 2010  
Hydrography:.....National Hydrography Dataset, 2009  
Contours:.....National Elevation Dataset, 2008



CONTOUR INTERVAL 40 FEET  
NORTH AMERICAN VERTICAL DATUM OF 1988

This map was produced to conform with version 0.5.10 of the  
draft USGS Standards for 7.5-Minute Quadrangle Maps.  
A metadata file associated with this product is draft version 0.5.12



QUADRANGLE LOCATION

Sylva South	Tuckasegee	Sam Knob
Glenville	Big Ridge	Lake Toxaway
Highlands	Cashiers	Reid

ADJOINING 7.5 QUADRANGLES

**ROAD CLASSIFICATION**

Interstate Route (thick red line)  
US Route (red line)  
State Route (thin red line)  
Local Road (black line)  
4WD (dashed black line)

Interstate Route (blue shield)  
US Route (white shield)  
State Route (white shield)  
FS Primary Route (black shield)  
FS Passenger Route (white shield)  
FS High Clearance Route (black shield)

Check with local Forest Service unit for current travel conditions and restrictions.

**BIG RIDGE, NC**  
2011