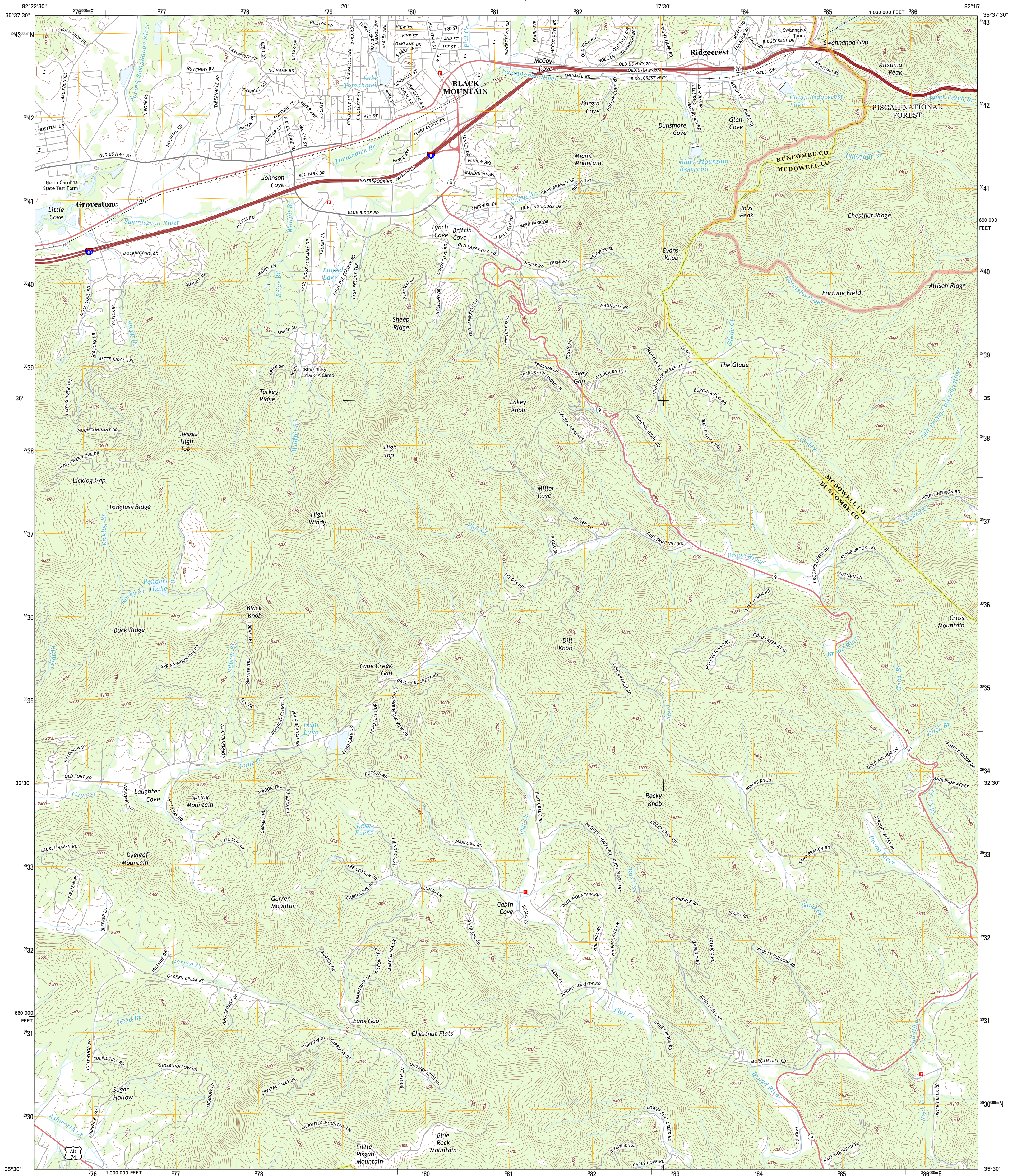




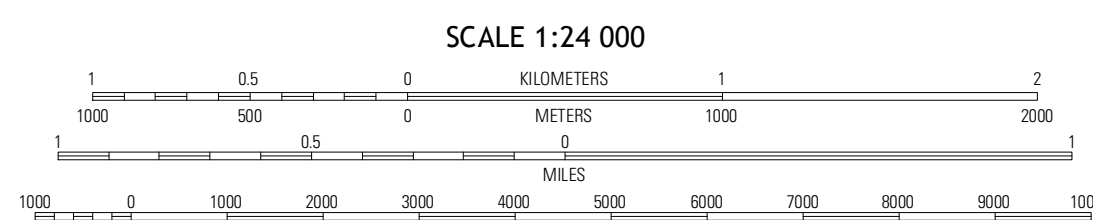
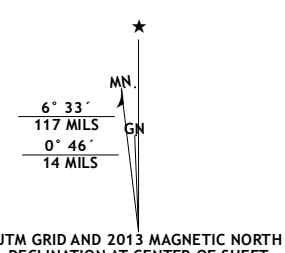
U.S. DEPARTMENT OF THE INTERIOR
U. S. GEOLOGICAL SURVEY



BLACK MOUNTAIN QUADRANGLE
NORTH CAROLINA
7.5-MINUTE SERIES



Produced by the United States Geological Survey
North American Datum of 1983 (NAD83)
World Geodetic System of 1984 (WGS84). Projection and
1 000-meter grid: Universal Transverse Mercator, Zone 17S
10 000-foot ticks: North Carolina Coordinate System of 1983



QUADRANGLE LOCATION

Crissy Pinnacle	Montreat	Old Fort
Oteen	Black Mountain	Moffitt Hill
Fruitland	But Cave	Lake Lure

ROAD CLASSIFICATION

- Expressway
- Secondary Hwy
- Ramp
- Interstate Route
- FS Primary Route
- Local Connector
- Local Road
- 4WD
- US Route
- FS Passenger Route
- FS High Clearance Route

Check with local Forest Service unit for current travel conditions and restrictions.

BLACK MOUNTAIN, NC
2013

Imagery: NAIP, September 2012
Roads: ©2006-2012 TomTom
Roads within US Forest Service Lands with limited Forest Service updates, 2013
Names: GNS, 2013
Hydrography: National Hydrography Dataset, 2012
Contours: National Elevation Dataset, 2008
Boundaries: Census, IBWC, IBC, USGS, 1972 - 2012

U.S. National Grid	100,000-m Square ID
LV	
Grid Zone Designation	17S

CONTOUR INTERVAL 40 FEET
NORTH AMERICAN VERTICAL DATUM OF 1988

This map was produced to conform with the National Geospatial Program US Topo Product Standard, 2011. A metadata file associated with this product is draft version 0.6.11

ADJOINING 7.5 QUADRANGLES